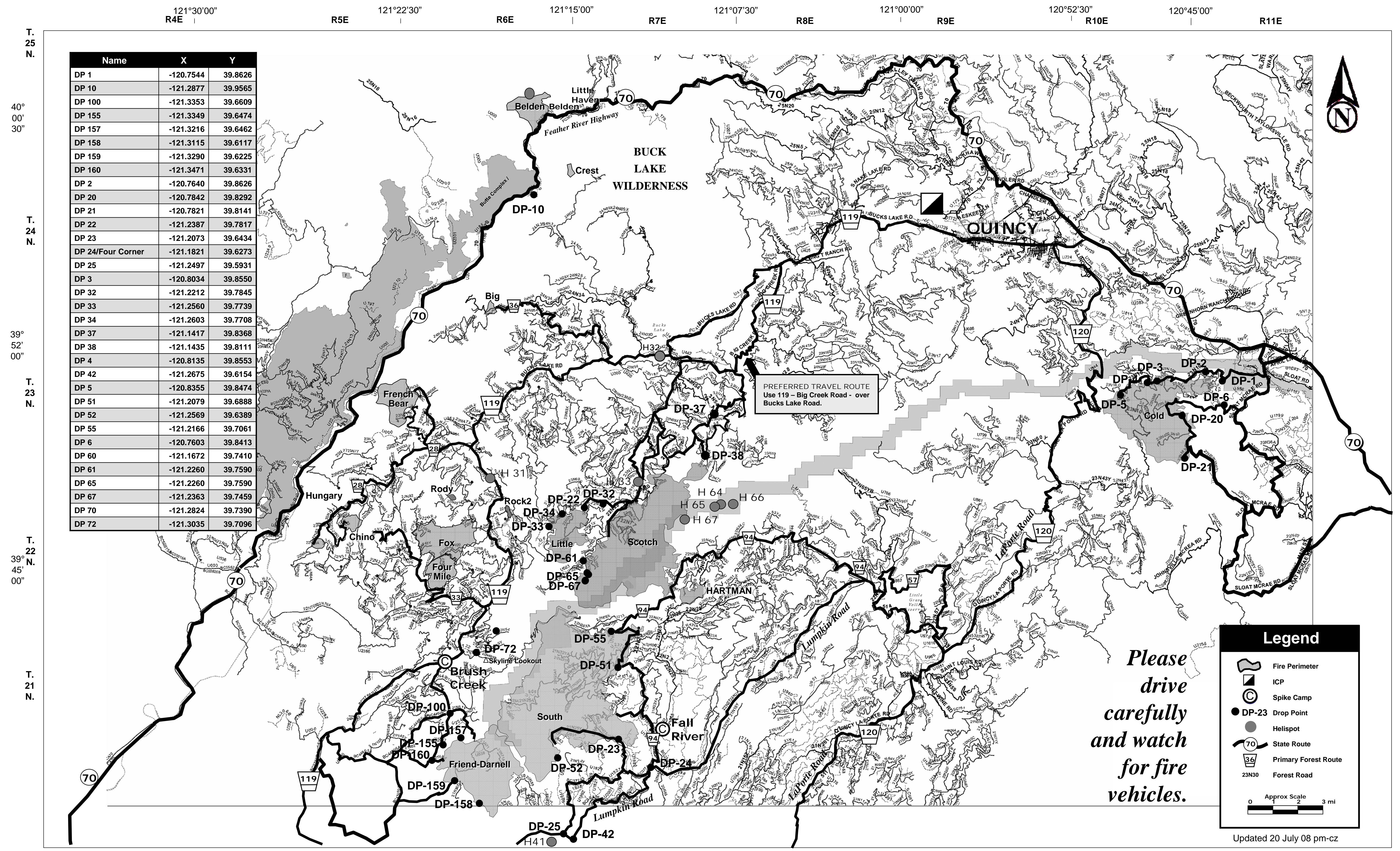


# Canyon Complex

# Transportation Map



Name	X	Y
DP 1	-120.7544	39.8626
DP 10	-121.2877	39.9565
DP 100	-121.3353	39.6609
DP 155	-121.3349	39.6474
DP 157	-121.3216	39.6462
DP 158	-121.3115	39.6117
DP 159	-121.3290	39.6225
DP 160	-121.3471	39.6331
DP 2	-120.7640	39.8626
DP 20	-120.7842	39.8292
DP 21	-120.7821	39.8141
DP 22	-121.2387	39.7817
DP 23	-121.2073	39.6434
DP 24/Four Corner	-121.1821	39.6273
DP 25	-121.2497	39.5931
DP 3	-120.8034	39.8550
DP 32	-121.2212	39.7845
DP 33	-121.2560	39.7739
DP 34	-121.2603	39.7708
DP 37	-121.1417	39.8368
DP 38	-121.1435	39.8111
DP 4	-120.8135	39.8553
DP 42	-121.2675	39.6154
DP 5	-120.8355	39.8474
DP 51	-121.2079	39.6888
DP 52	-121.2569	39.6389
DP 55	-121.2166	39.7061
DP 6	-120.7603	39.8413
DP 60	-121.1672	39.7410
DP 61	-121.2260	39.7590
DP 65	-121.2260	39.7590
DP 67	-121.2363	39.7459
DP 70	-121.2824	39.7390
DP 72	-121.3035	39.7096

PREFERRED TRAVEL ROUTE  
Use 119 - Big Creek Road - over  
Bucks Lake Road.

Please  
drive  
carefully  
and watch  
for fire  
vehicles.

**Legend**

- Fire Perimeter
- ICP
- Spike Camp
- Drop Point
- Helispot
- State Route
- Primary Forest Route
- Forest Road

Approx Scale 0 2 3 mi