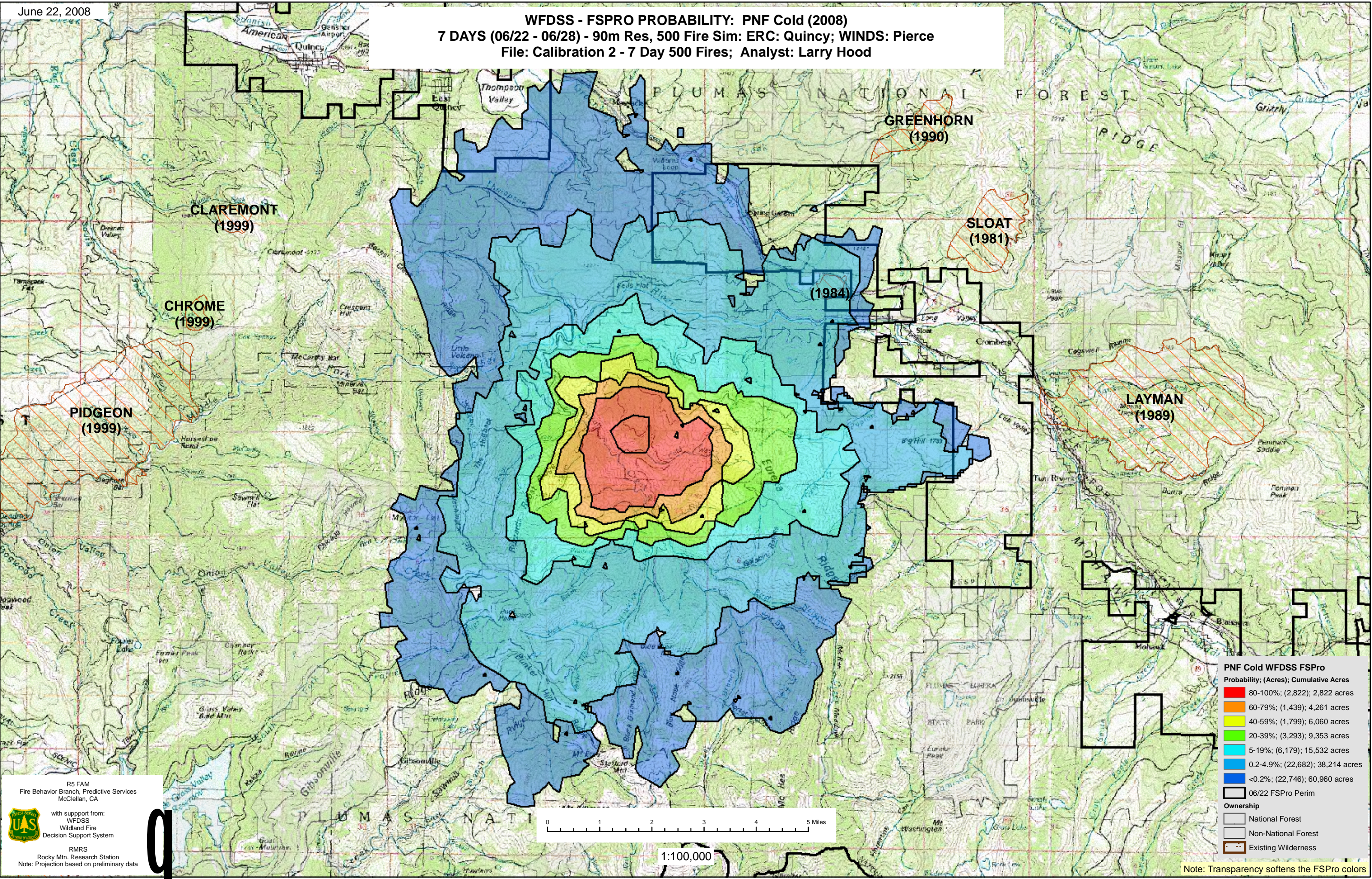


WFDSS - FSPRO PROBABILITY: PNF Cold (2008)
7 DAYS (06/22 - 06/28) - 90m Res, 500 Fire Sim: ERC: Quincy; WINDS: Pierce
File: Calibration 2 - 7 Day 500 Fires; Analyst: Larry Hood

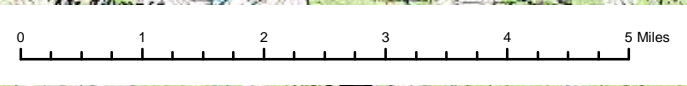


PNF Cold WFDSS FSPRO

Probability	(Acres)	Cumulative Acres
80-100%	(2,822)	2,822 acres
60-79%	(1,439)	4,261 acres
40-59%	(1,799)	6,060 acres
20-39%	(3,293)	9,353 acres
5-19%	(6,179)	15,532 acres
0.2-4.9%	(22,682)	38,214 acres
<0.2%	(22,746)	60,960 acres

Ownership

- National Forest
- Non-National Forest
- Existing Wilderness



1:100,000

R5 FAM
Fire Behavior Branch, Predictive Services
McClellan, CA

with support from:
WFDSS
Wildland Fire
Decision Support System

RMRS
Rocky Mtn. Research Station
Note: Projection based on preliminary data

Note: Transparency softens the FSPRO colors