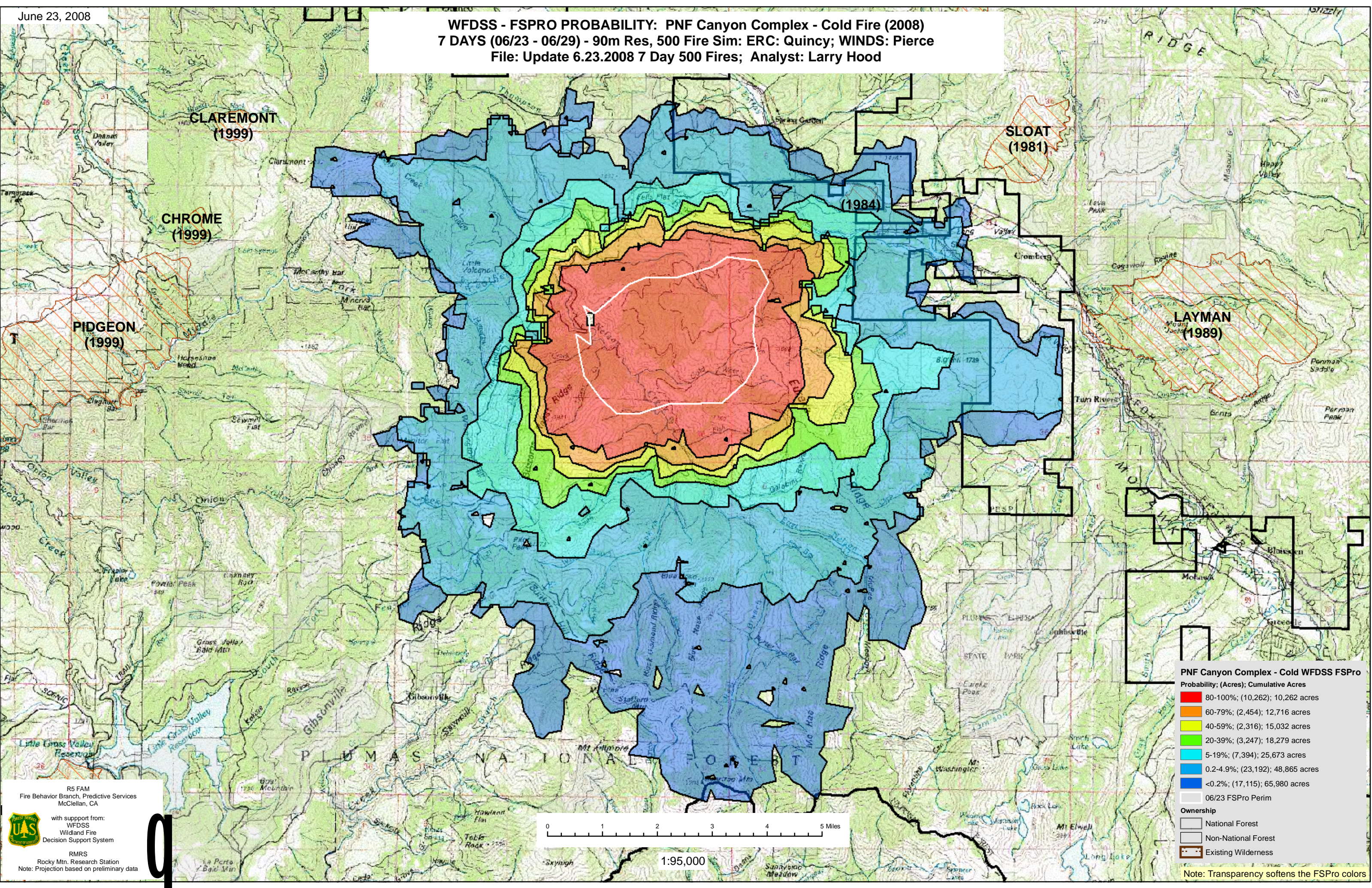


WFDSS - FSPRO PROBABILITY: PNF Canyon Complex - Cold Fire (2008)
7 DAYS (06/23 - 06/29) - 90m Res, 500 Fire Sim: ERC: Quincy; WINDS: Pierce
File: Update 6.23.2008 7 Day 500 Fires; Analyst: Larry Hood



PNF Canyon Complex - Cold WFDSS FSPro
Probability; (Acres); Cumulative Acres

| | |
|-------------------|------------------------|
| 80-100% | (10,262); 10,262 acres |
| 60-79% | (2,454); 12,716 acres |
| 40-59% | (2,316); 15,032 acres |
| 20-39% | (3,247); 18,279 acres |
| 5-19% | (7,394); 25,673 acres |
| 0.2-4.9% | (23,192); 48,865 acres |
| <0.2% | (17,115); 65,980 acres |
| 06/23 FSPro Perim | |

Ownership

- National Forest
- Non-National Forest
- Existing Wilderness

R5 FAM
Fire Behavior Branch, Predictive Services
McClellan, CA

with support from:
WFDSS
Wildland Fire
Decision Support System

RMRS
Rocky Mtn. Research Station
Note: Projection based on preliminary data

Note: Transparency softens the FSPro colors