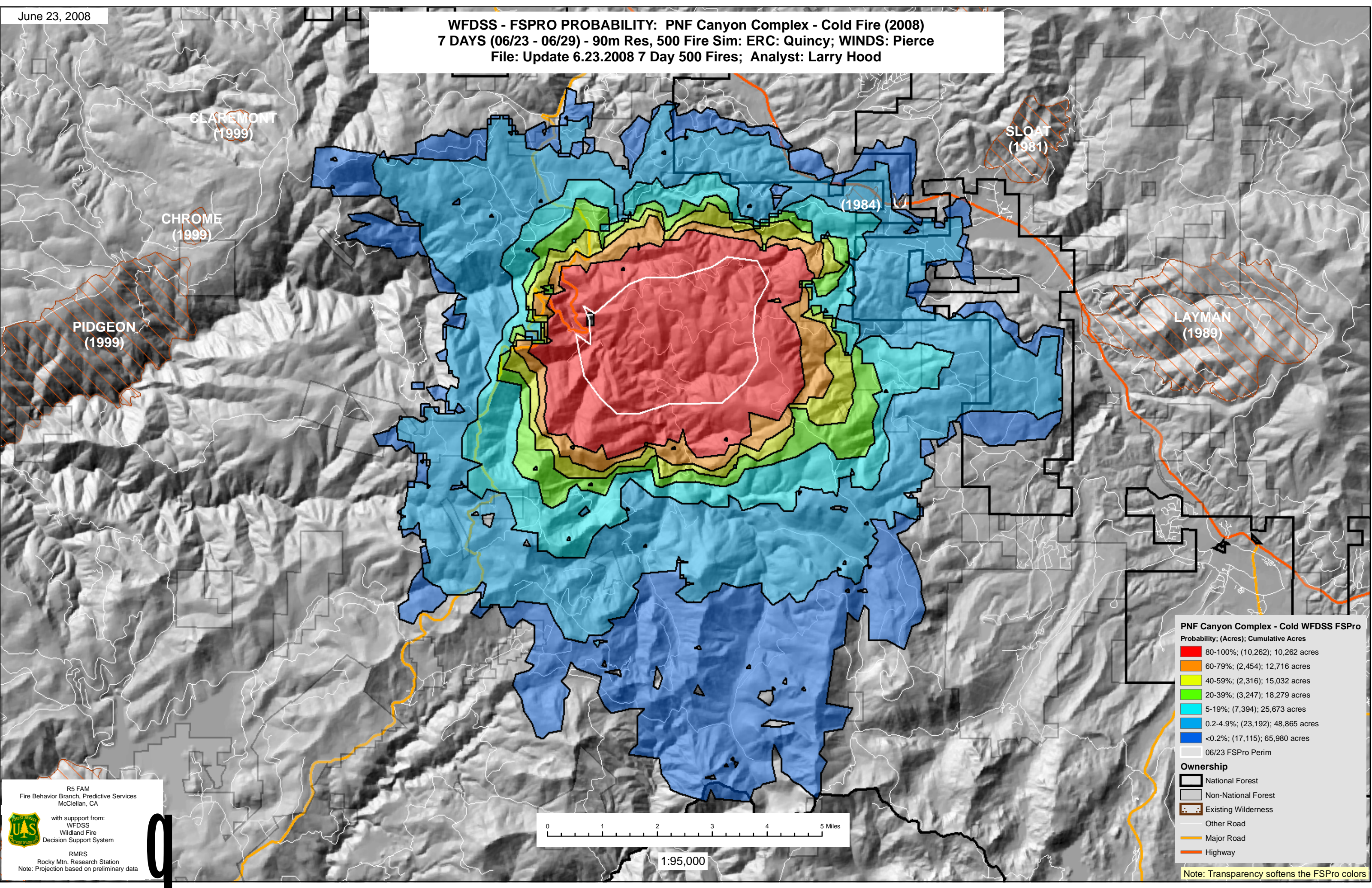


WFDSS - FSPRO PROBABILITY: PNF Canyon Complex - Cold Fire (2008)
7 DAYS (06/23 - 06/29) - 90m Res, 500 Fire Sim: ERC: Quincy; WINDS: Pierce
File: Update 6.23.2008 7 Day 500 Fires; Analyst: Larry Hood



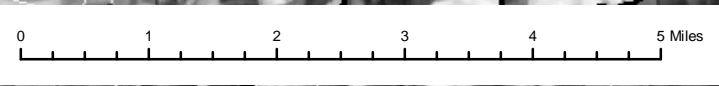
PNF Canyon Complex - Cold WFDSS FSPRO
Probability; (Acres); Cumulative Acres

- 80-100%; (10,262); 10,262 acres
- 60-79%; (2,454); 12,716 acres
- 40-59%; (2,316); 15,032 acres
- 20-39%; (3,247); 18,279 acres
- 5-19%; (7,394); 25,673 acres
- 0.2-4.9%; (23,192); 48,865 acres
- <0.2%; (17,115); 65,980 acres

06/23 FSPRO Perim

Ownership

- National Forest
- Non-National Forest
- Existing Wilderness
- Other Road
- Major Road
- Highway



1:95,000

R5 FAM
Fire Behavior Branch, Predictive Services
McClellan, CA

with support from:
WFDSS
Wildland Fire
Decision Support System

RMRS
Rocky Mtn. Research Station
Note: Projection based on preliminary data

Note: Transparency softens the FSPRO colors