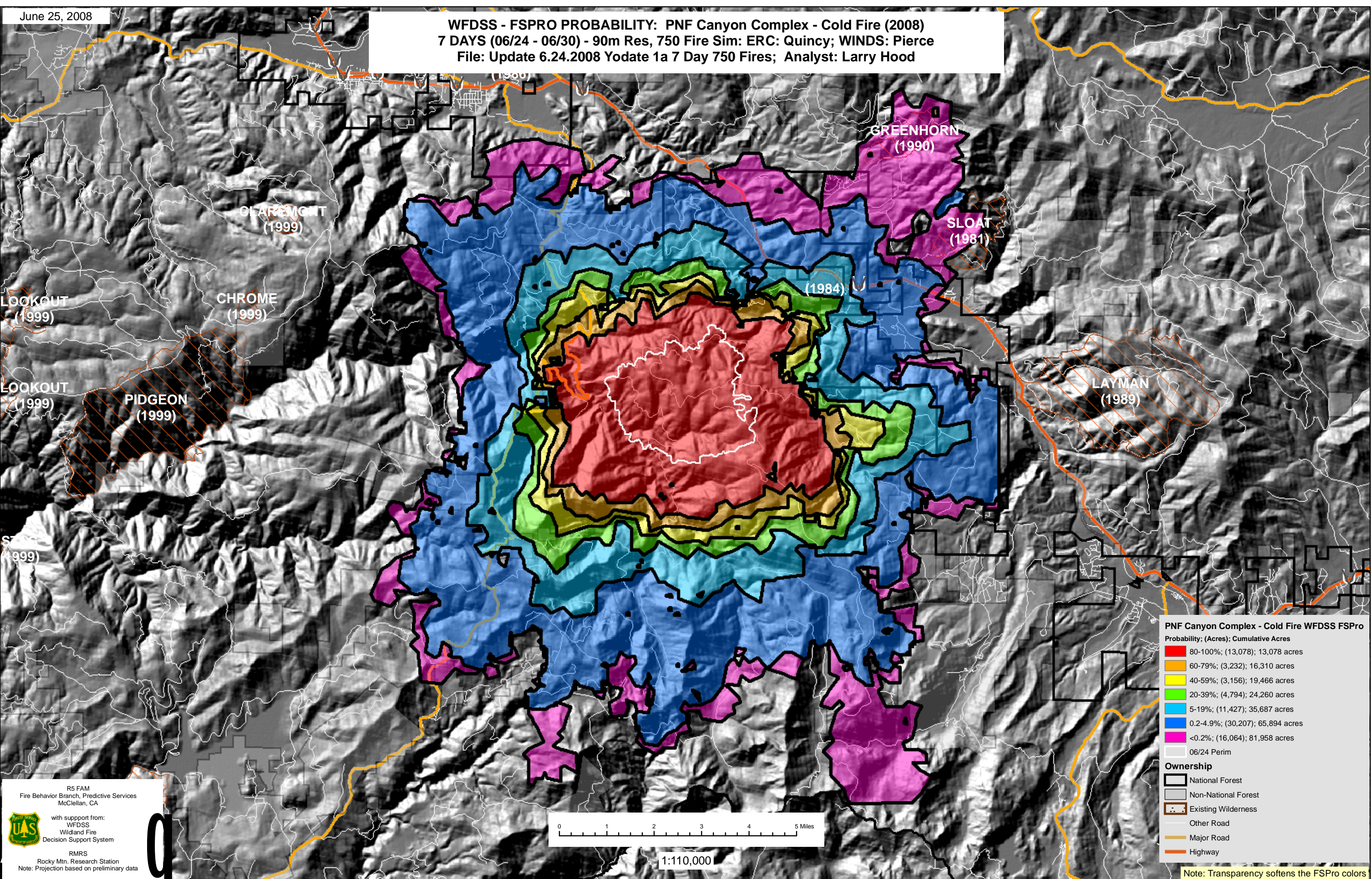


WFDSS - FSPRO PROBABILITY: PNF Canyon Complex - Cold Fire (2008)  
7 DAYS (06/24 - 06/30) - 90m Res, 750 Fire Sim: ERC: Quincy; WINDS: Pierce  
File: Update 6.24.2008 Yodate 1a 7 Day 750 Fires; Analyst: Larry Hood



**PNF Canyon Complex - Cold Fire WFDSS FSPRO**  
Probability; (Acres); Cumulative Acres

80-100%	(13,078)	13,078 acres
60-79%	(3,232)	16,310 acres
40-59%	(3,156)	19,466 acres
20-39%	(4,794)	24,260 acres
5-19%	(11,427)	35,687 acres
0.2-4.9%	(30,207)	65,894 acres
<0.2%	(16,064)	81,958 acres

06/24 Perim

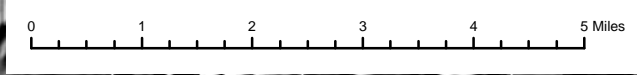
**Ownership**

- National Forest
- Non-National Forest
- Existing Wilderness
- Other Road
- Major Road
- Highway

R5 FAM  
Fire Behavior Branch, Predictive Services  
McClellan, CA

with support from:  
WFDSS  
Wildland Fire  
Decision Support System

RMRS  
Rocky Mtn. Research Station  
Note: Projection based on preliminary data



1:110,000

Note: Transparency softens the FSPRO colors