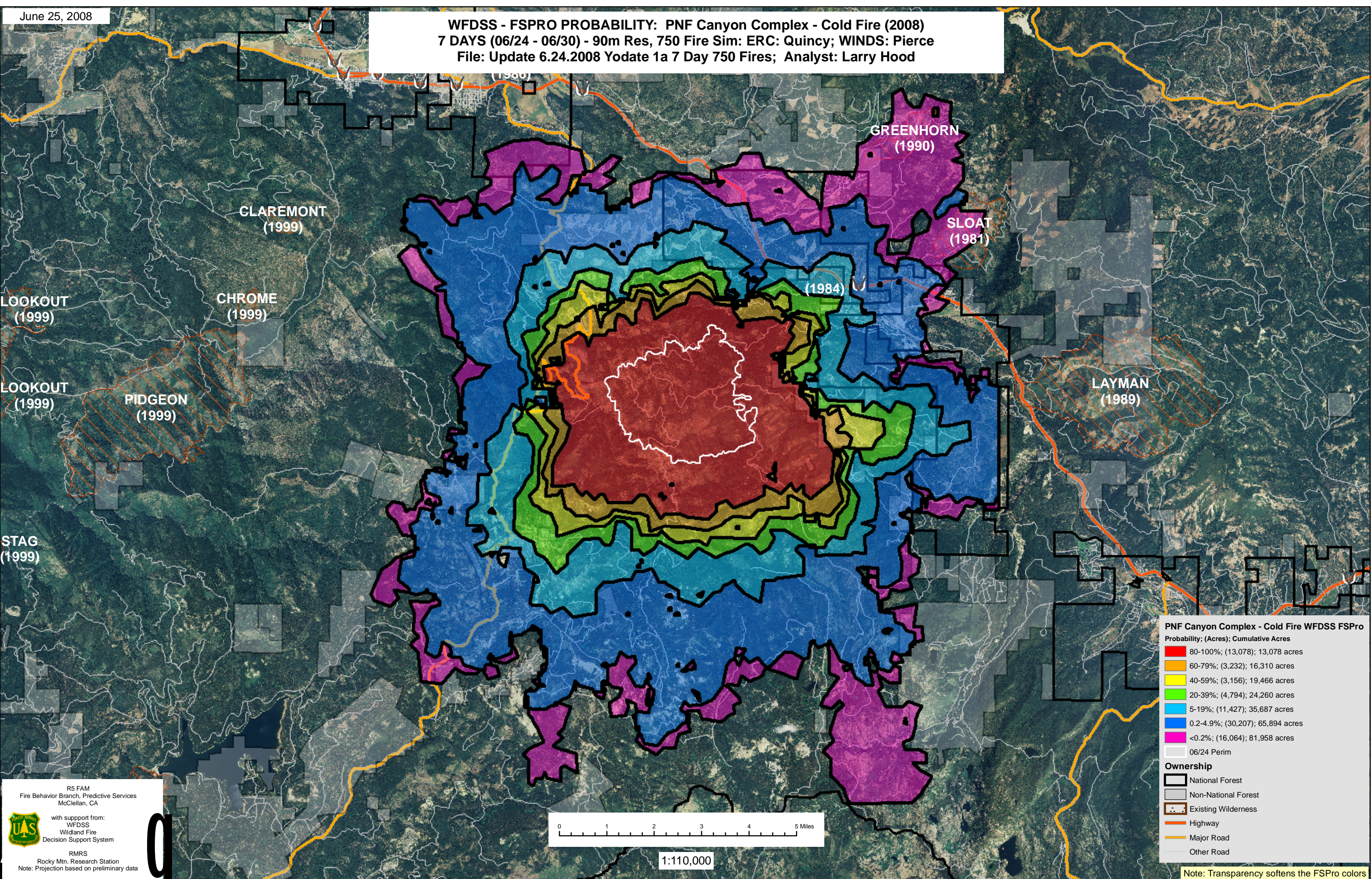


WFDSS - FSPRO PROBABILITY: PNF Canyon Complex - Cold Fire (2008)
7 DAYS (06/24 - 06/30) - 90m Res, 750 Fire Sim: ERC: Quincy; WINDS: Pierce
File: Update 6.24.2008 Yodate 1a 7 Day 750 Fires; Analyst: Larry Hood



PNF Canyon Complex - Cold Fire WFDSS FSPRO

Probability; (Acres); Cumulative Acres

- 80-100%; (13,078); 13,078 acres
- 60-79%; (3,232); 16,310 acres
- 40-59%; (3,156); 19,466 acres
- 20-39%; (4,794); 24,260 acres
- 5-19%; (11,427); 35,687 acres
- 0.2-4.9%; (30,207); 65,894 acres
- <0.2%; (16,064); 81,958 acres

06/24 Perim

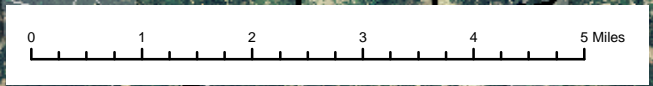
Ownership

- National Forest
- Non-National Forest
- Existing Wilderness
- Highway
- Major Road
- Other Road

R5 FAM
Fire Behavior Branch, Predictive Services
McClellan, CA

with support from:
WFDSS
Wildland Fire
Decision Support System

RMRS
Rocky Mtn. Research Station
Note: Projection based on preliminary data



1:110,000

Note: Transparency softens the FSPRO colors