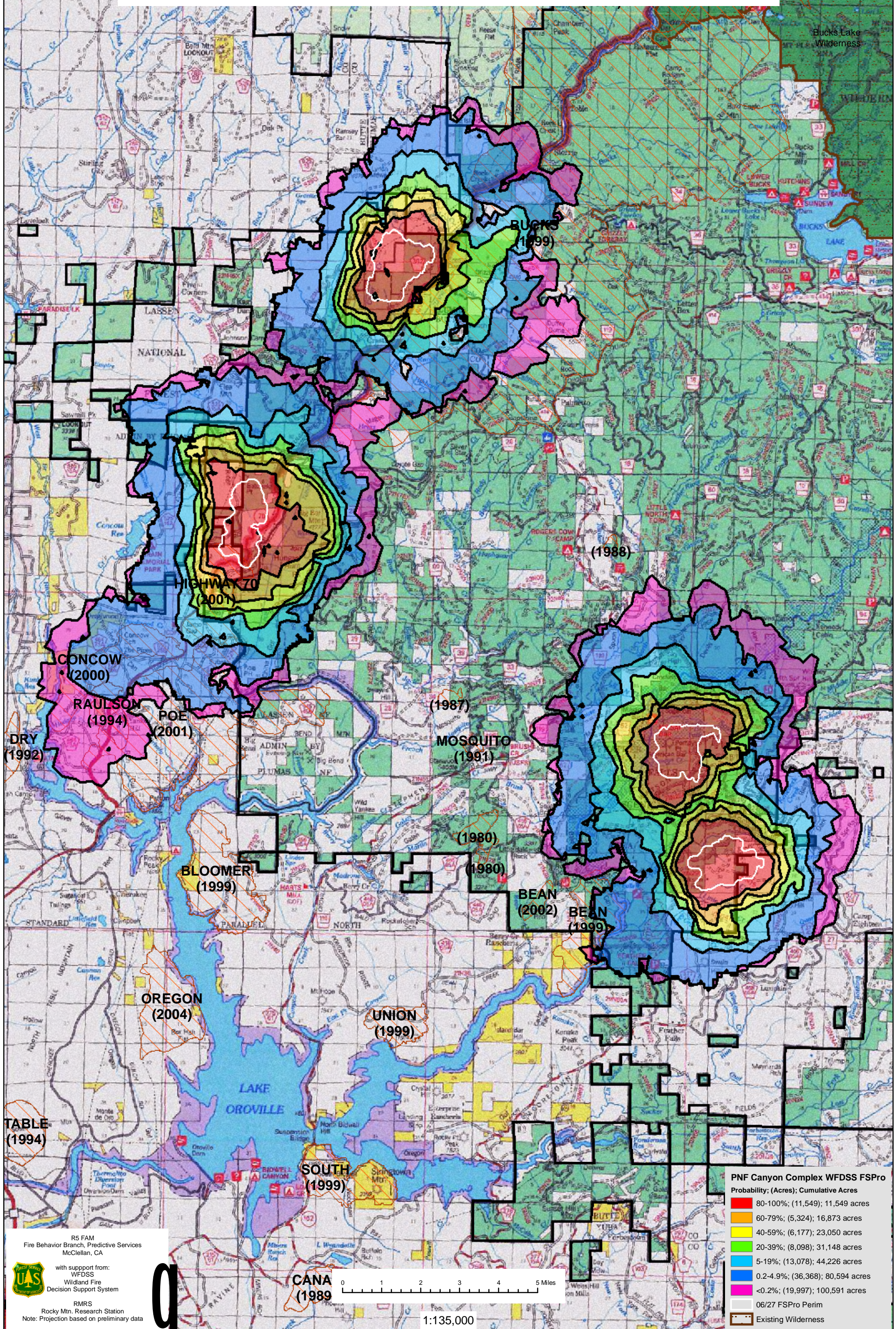


WFDSS - FSPRO PROBABILITY: PNF CANYON COMPLEX - South, Frey, Camp, Rim Fires (2008)
7 DAYS (06/27 - 07/03) - 90m Res, 500 Fire Sim: ERC: Quincy; WINDS: Jarbo Gap
File: 6.27.2008 7 Day 500 Fires; Analyst: Larry Hood



PNF Canyon Complex WFDSS FSPro

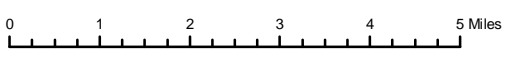
| Probability | (Acres) | Cumulative Acres |
|-------------|----------|------------------|
| 80-100% | (11,549) | 11,549 acres |
| 60-79% | (5,324) | 16,873 acres |
| 40-59% | (6,177) | 23,050 acres |
| 20-39% | (8,098) | 31,148 acres |
| 5-19% | (13,078) | 44,226 acres |
| 0.2-4.9% | (36,368) | 80,594 acres |
| <0.2% | (19,997) | 100,591 acres |

06/27 FSPro Perim
 Existing Wilderness

R5 FAM
Fire Behavior Branch, Predictive Services
McClellan, CA

with support from:
WFDSS
Wildland Fire
Decision Support System

RMRS
Rocky Mtn. Research Station
Note: Projection based on preliminary data



1:135,000