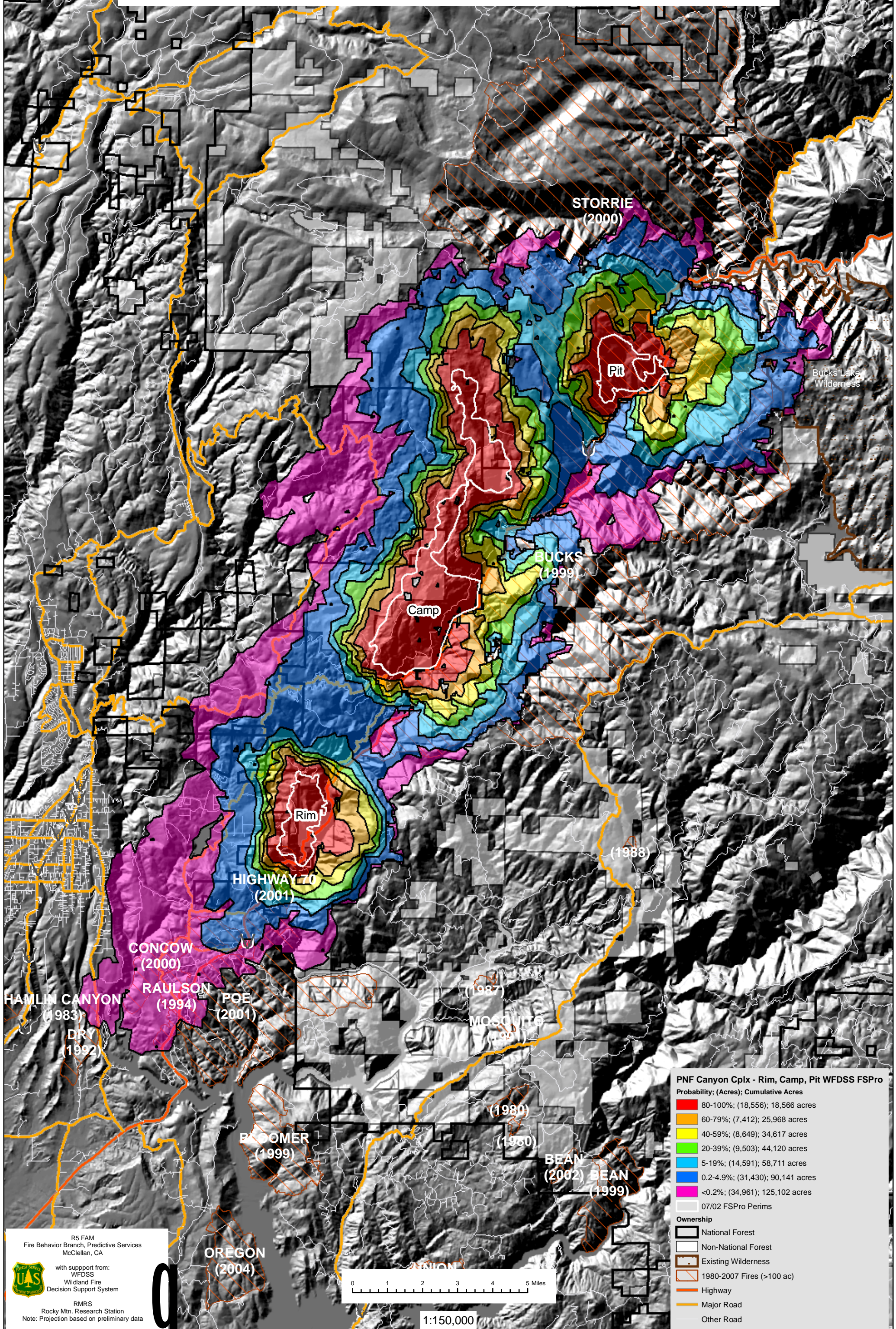


July 02, 2008

WFDSS - FSPRO PROBABILITY: PNF CANYON COMPLEX - Rim, Camp and Pit Fires (2008)
7 DAYS (07/02 - 07/08) - 90m Res, 1000 Fire Sim: ERC: Quincy; WINDS: Jarbo Gap
File: 7.2.2008 7 Day 1000 Fires: Pit, Camp, Rim; Analyst: Larry Hood



PNF Canyon Cplx - Rim, Camp, Pit WFDSS FSPRO
Probability; (Acres); Cumulative Acres

80-100%	(18,556); 18,566 acres
60-79%	(7,412); 25,968 acres
40-59%	(8,649); 34,617 acres
20-39%	(9,503); 44,120 acres
5-19%	(14,591); 58,711 acres
0.2-4.9%	(31,430); 90,141 acres
<0.2%	(34,961); 125,102 acres
07/02 FSPRO Perims	

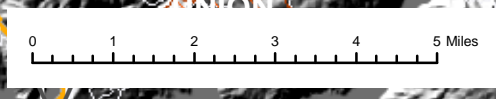
Ownership

- National Forest
- Non-National Forest
- Existing Wilderness
- 1980-2007 Fires (>100 ac)
- Highway
- Major Road
- Other Road

R5 FAM
Fire Behavior Branch, Predictive Services
McClellan, CA

with support from:
WFDSS
Wildland Fire
Decision Support System

RMRS
Rocky Mtn. Research Station
Note: Projection based on preliminary data



1:150,000