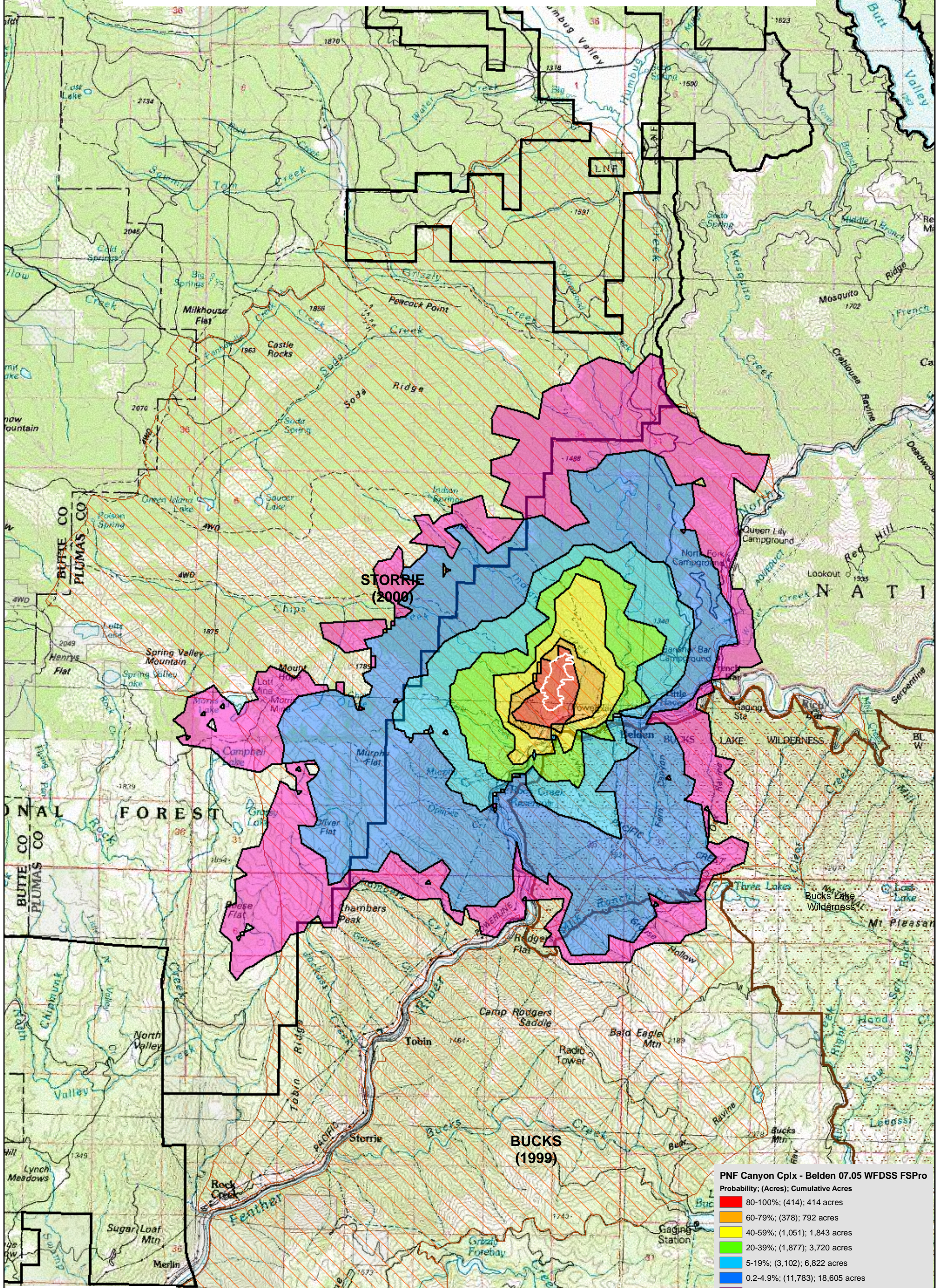


WFDSS - FSPRO PROBABILITY: PNF CANYON COMPLEX - Belden Fire (2008) 7 DAYS (07/05 - 07/11) - 90m Res, 1000 Fire Sim: ERC: Quincy; WINDS: Jarbo Gap File: 7.5.2008 7 Day 1000 Fires; Analyst: Larry Hood



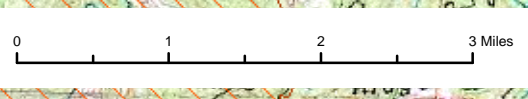
PNF Canyon Cplx - Belden 07.05 WFDSS FSPRO
Probability; (Acres); Cumulative Acres

| | |
|----------|------------------------|
| 80-100% | (414); 414 acres |
| 60-79% | (378); 792 acres |
| 40-59% | (1,051); 1,843 acres |
| 20-39% | (1,877); 3,720 acres |
| 5-19% | (3,102); 6,822 acres |
| 0.2-4.9% | (11,783); 18,605 acres |
| <0.2% | (9,543); 28,148 acres |

07/04 FSpro Perim

Ownership

- National Forest
- Non-National Forest
- Existing Wilderness
- 1980-2007 Fires (>100 ac)



1:80,000

R5 FAM
Fire Behavior Branch, Predictive Services
McClellan, CA

with support from:
WFDSS
Wildland Fire
Decision Support System

RMRS
Rocky Mtn. Research Station
Note: Projection based on preliminary data

