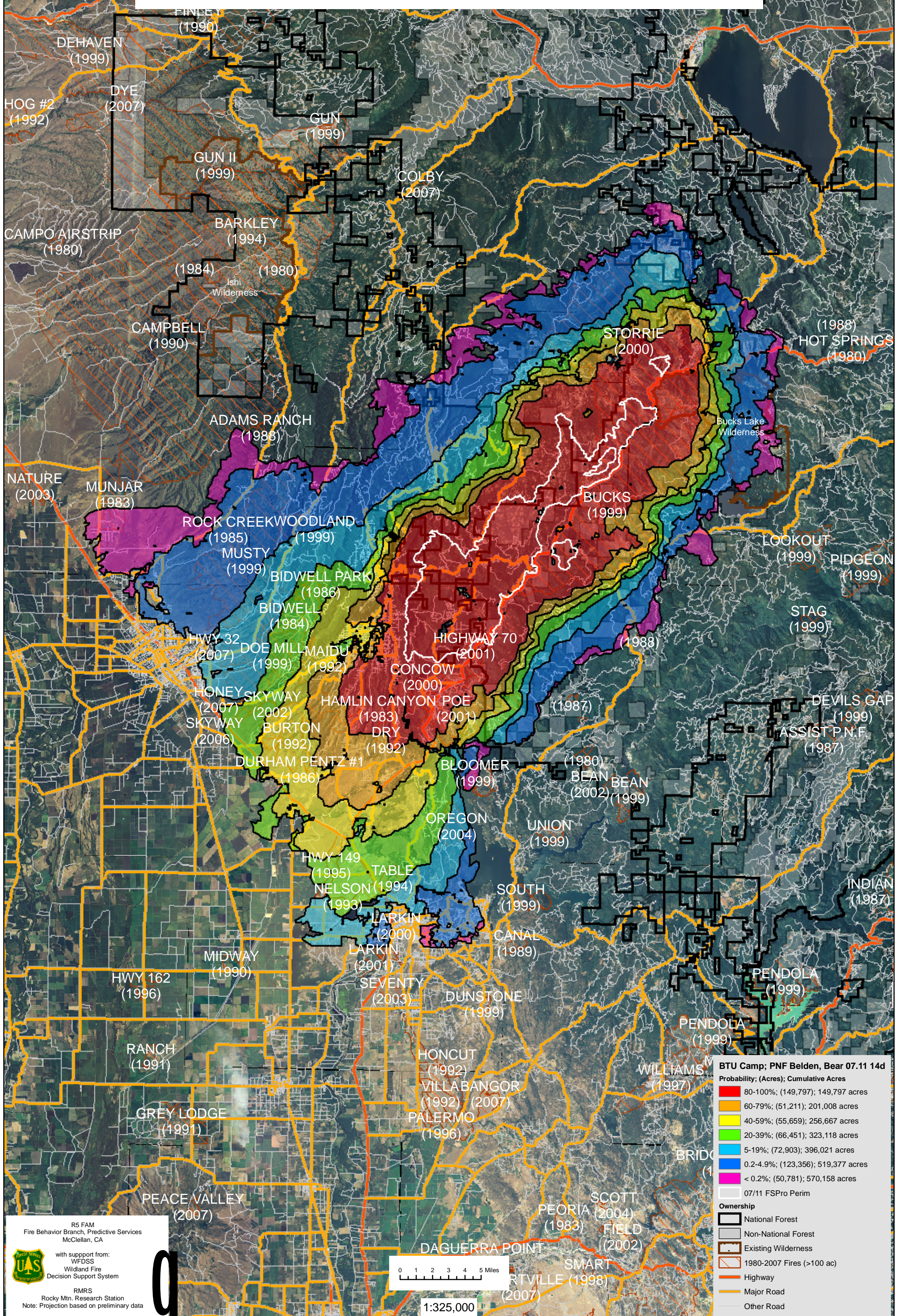


July 11, 2008

WFDSS - FSPRO PROBABILITY:

BTU LIGHTNING - CAMP; PNF CANYON CPLX - Belden, French/Bear Fires (2008)
14 DAYS (07/11 - 07/24) - 120m Res, 1000 Fire Sim: ERC: Quincy; WINDS: Jarbo Gap
File: 7.11.2008 14day 1000fires Camp,Belden,Bear GACC; Analyst: Larry Hood



BTU Camp; PNF Belden, Bear 07.11 14d

Probability: (Acres); Cumulative Acres

- 80-100%: (149,797); 149,797 acres
- 60-79%: (51,211); 201,008 acres
- 40-59%: (55,659); 256,667 acres
- 20-39%: (66,451); 323,118 acres
- 5-19%: (72,903); 396,021 acres
- 0.2-4.9%: (123,356); 519,377 acres
- < 0.2%: (50,781); 570,158 acres

07/11 FSPRO Perim

Ownership

- National Forest
- Non-National Forest
- Existing Wilderness
- 1980-2007 Fires (>100 ac)
- Highway
- Major Road
- Other Road

R5 FAM
Fire Behavior Branch, Predictive Services
McClellan, CA

with support from:
WFDSS
Wildland Fire
Decision Support System

RMRS
Rocky Mtn. Research Station
Note: Projection based on preliminary data

