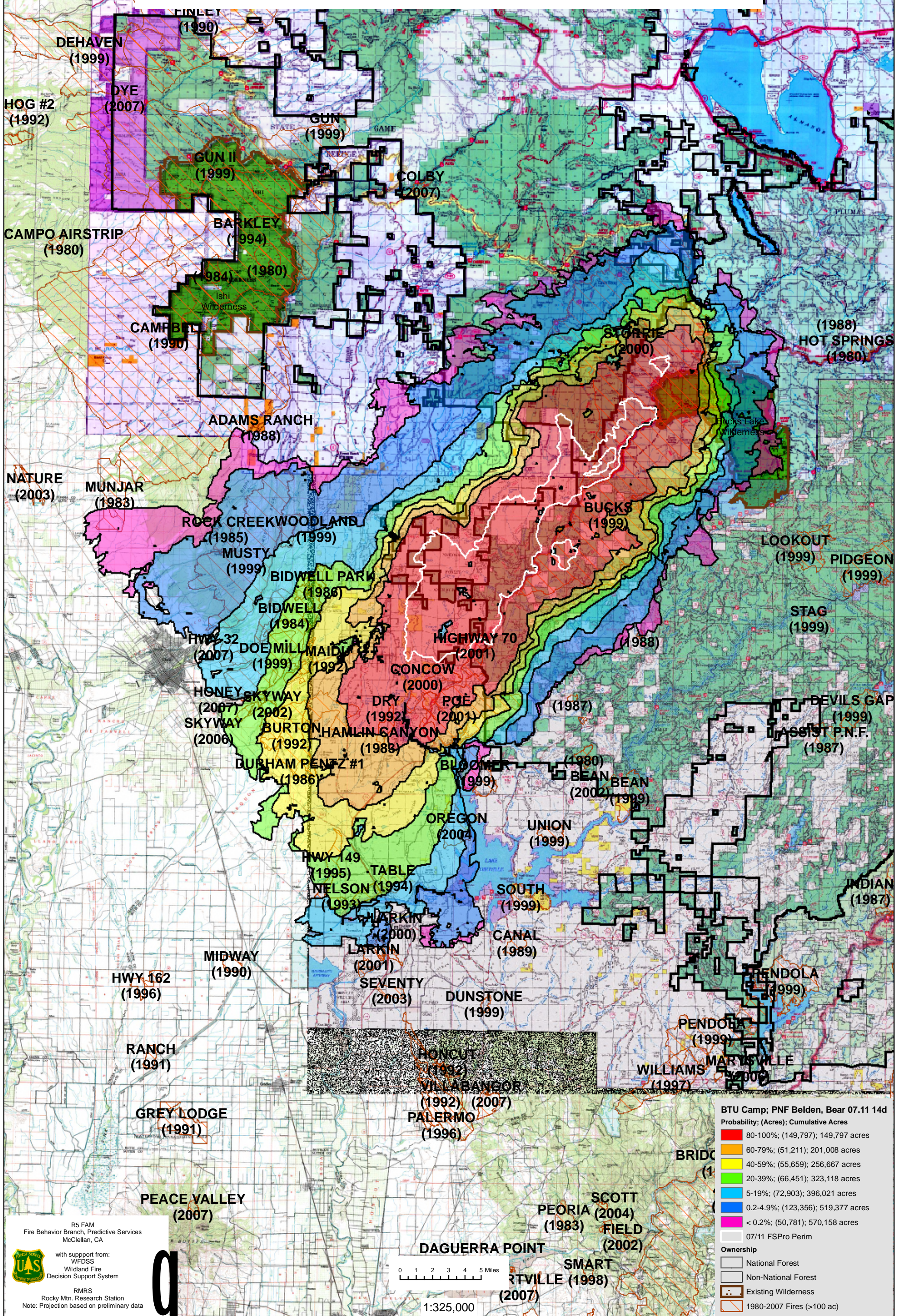


July 11, 2008

### WFDSS - FSPRO PROBABILITY:

BTU LIGHTNING - CAMP; PNF CANYON CPLX - Belden, French/Bear Fires (2008)  
14 DAYS (07/11 - 07/24) - 120m Res, 1000 Fire Sim: ERC: Quincy; WINDS: Jarbo Gap  
File: 7.11.2008 14day 1000fires Camp,Belden,Bear GACC; Analyst: Larry Hood



MANION #3  
(1998)

DEHAVEN  
(1999)

HOG #2  
(1992)

CAMPO AIRSTRIP  
(1980)

NATURE  
(2003)

MUNJAR  
(1983)

RANCH  
(1991)

GREY LODGE  
(1991)

PEACE VALLEY  
(2007)

R5 FAM  
Fire Behavior Branch, Predictive Services  
McClellan, CA

with support from:  
WFDSS  
Wildland Fire  
Decision Support System

RMRS  
Rocky Mtn. Research Station  
Note: Projection based on preliminary data



1:325,000

BTU Camp; PNF Belden, Bear 07.11 14d  
Probability; (Acres); Cumulative Acres

- 80-100%; (149,797); 149,797 acres
- 60-79%; (51,211); 201,008 acres
- 40-59%; (55,659); 256,667 acres
- 20-39%; (66,451); 323,118 acres
- 5-19%; (72,903); 396,021 acres
- 0.2-4.9%; (123,356); 519,377 acres
- < 0.2%; (50,781); 570,158 acres

Ownership

- National Forest
- Non-National Forest
- Existing Wilderness
- 1980-2007 Fires (>100 ac)