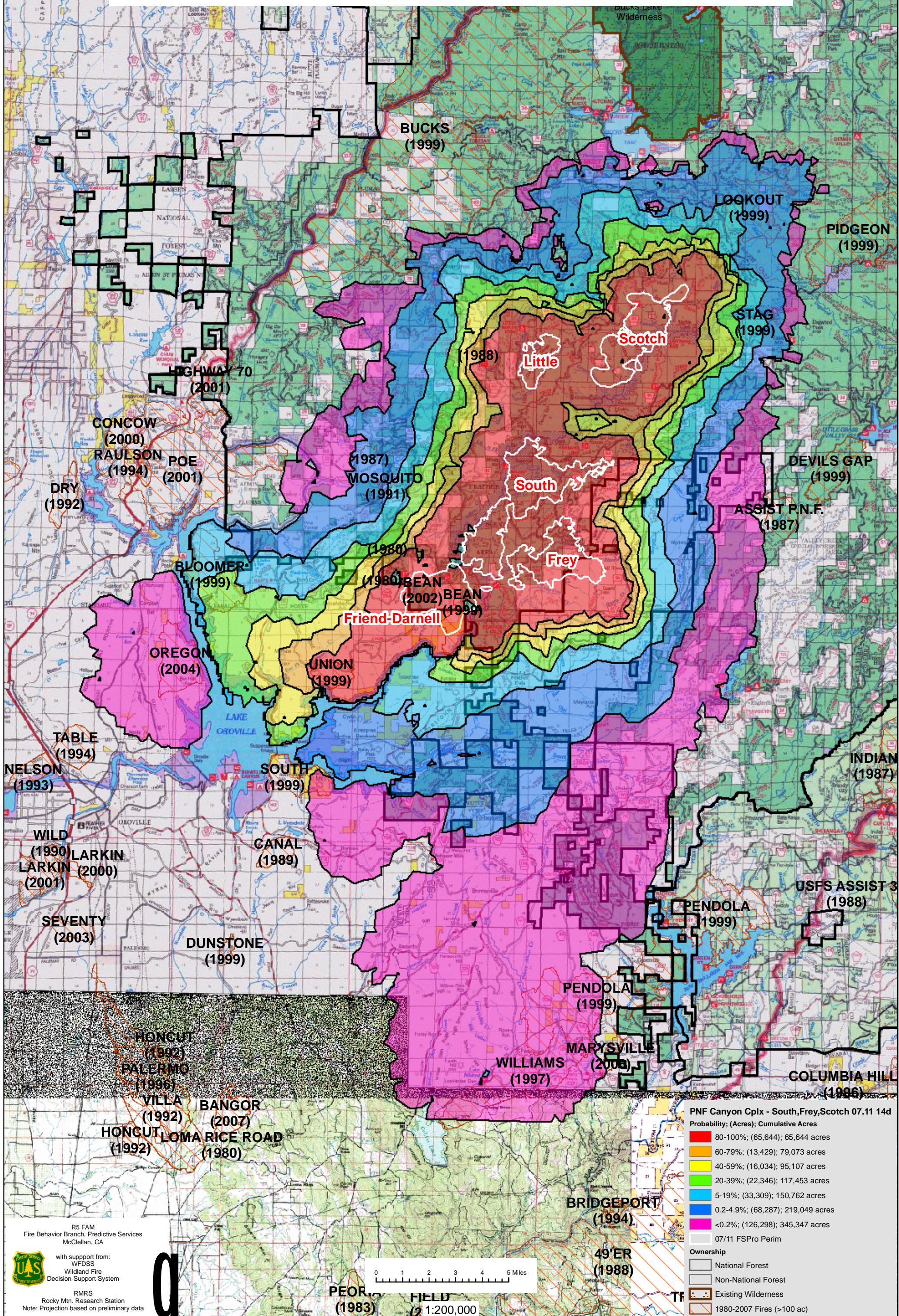


WFDSS - FSPRO PROBABILITY: PNF CANYON COMPLEX
 South, Frey, Friend-Darnell, Little, Scotch Fires (2008)
 14 DAYS (07/11 - 07/24) - 120m Res, 1000 Fire Sim: ERC: Pike Cnty LO; WINDS: Pike Cnty LO
 File: 7.11.2008 14d 1000f So. Cyn. Complx 6 Fires GACC; Analyst: Larry Hood



PNF Canyon Cplx - South, Frey, Scotch 07.11.14d
 Probability; (Acres); Cumulative Acres

- 80-100%; (65,644); 65,644 acres
- 60-79%; (13,429); 79,073 acres
- 40-59%; (16,034); 95,107 acres
- 20-39%; (22,346); 117,453 acres
- 5-19%; (33,309); 150,762 acres
- 0.2-4.9%; (68,287); 219,049 acres
- <0.2%; (126,298); 345,347 acres

07/11 FSPRO Perim

Ownership

- National Forest
- Non-National Forest
- Existing Wilderness
- 1980-2007 Fires (>100 ac)

R5 FAM
 Fire Behavior Branch, Predictive Services
 McClellan, CA

with support from:
 WFDSS
 Wildland Fire
 Decision Support System

RMRS
 Rocky Mtn. Research Station
 Note: Projection based on preliminary data



PEORIA FIELD (1983) 2 1:200,000

