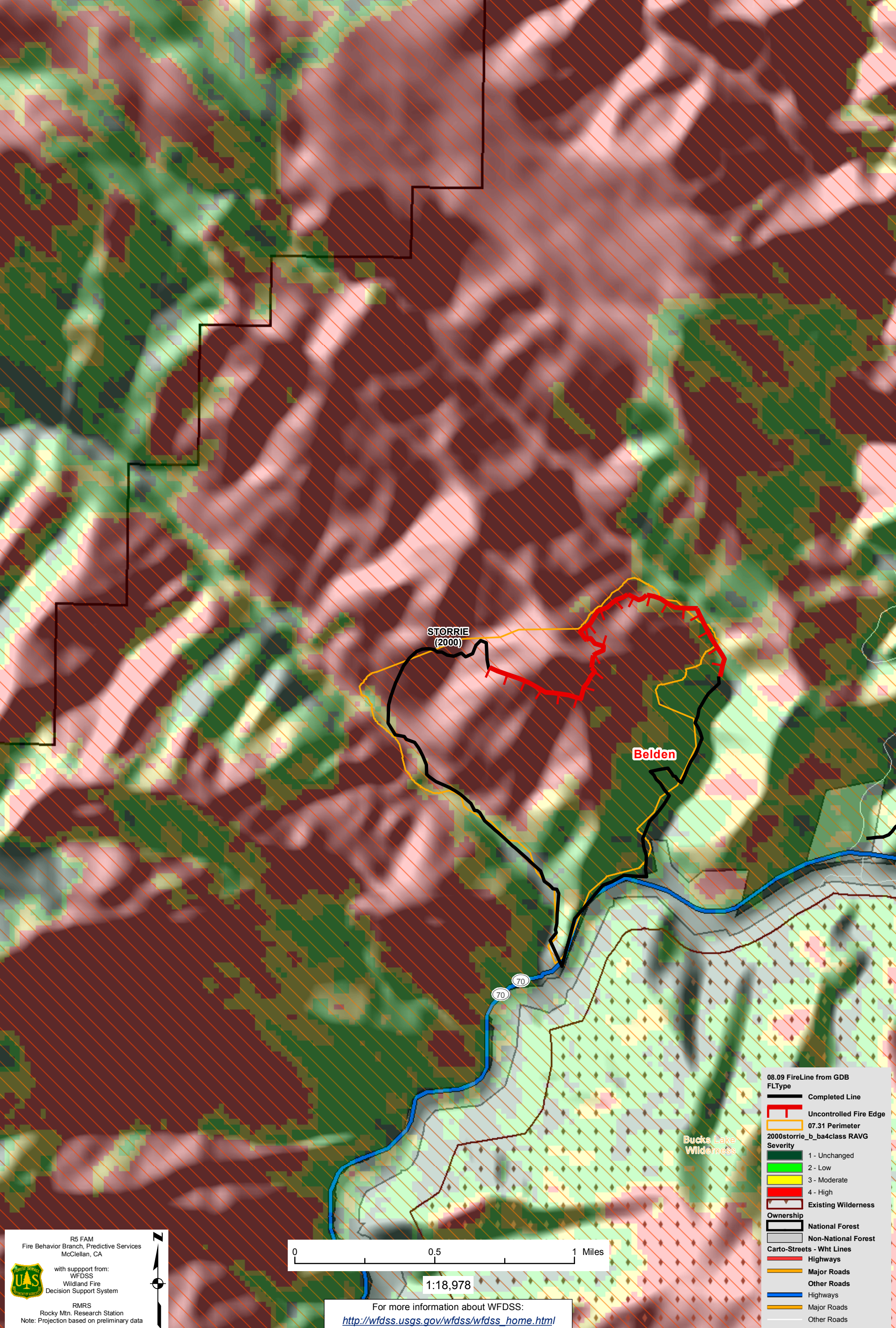


WFDSS - PNF Belden Fire (2008) Examination of 2000 Storrie Fire RAVG and 8/9/2008 Belden Firelines (8/21/01 Postfire Satellite data - 2005 NAIP imagery)



STORRIE
(2000)

Belden

Bucks Lake
Wilderness

08.09 FireLine from GDB

FLType

- Completed Line
- Uncontrolled Fire Edge
- 07.31 Perimeter

2000storrie_b_ba4class RAVG

Severity

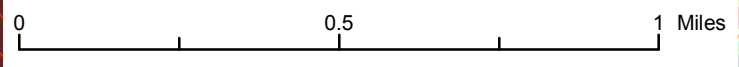
- 1 - Unchanged
- 2 - Low
- 3 - Moderate
- 4 - High
- Existing Wilderness

Ownership

- National Forest
- Non-National Forest

Carto-Streets - Wht Lines

- Highways
- Major Roads
- Other Roads
- Highways
- Major Roads
- Other Roads




1:18,978

For more information about WFDSS:
http://wfdss.usgs.gov/wfdss/wfdss_home.html

R5 FAM
Fire Behavior Branch, Predictive Services
McClellan, CA

with support from:
WFDSS
Wildland Fire
Decision Support System



RMRS
Rocky Mtn. Research Station
Note: Projection based on preliminary data

