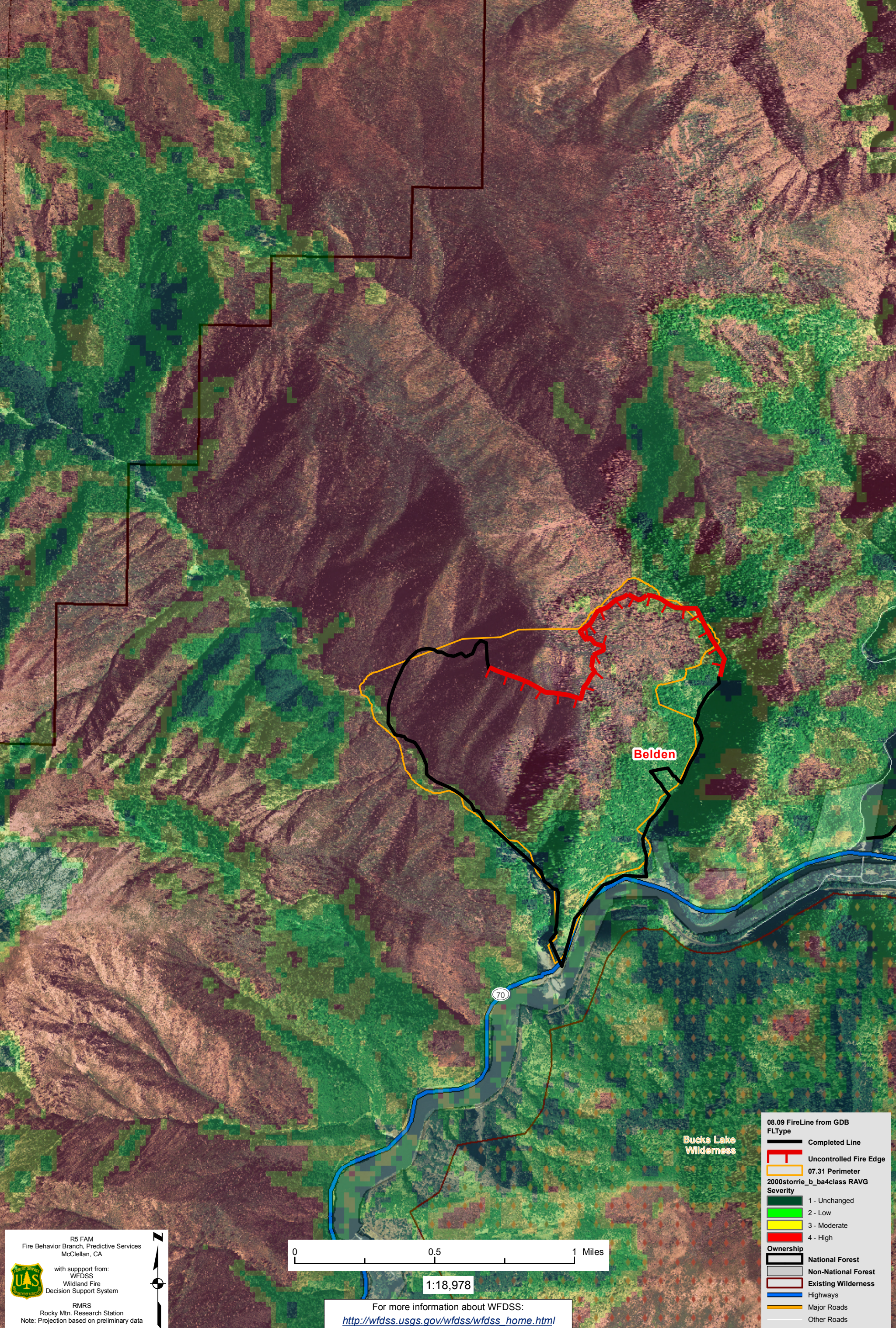


WFDSS - PNF Belden Fire (2008) Examination of 2000 Storrie Fire RAVG and 8/9/2008 Belden Firelines (8/21/01 Postfire Satellite data - 2005 NAIP imagery)



R5 FAM
Fire Behavior Branch, Predictive Services
McClellan, CA

with support from:
WFDSS
Wildland Fire
Decision Support System

RMRS
Rocky Mtn. Research Station
Note: Projection based on preliminary data

0 0.5 1 Miles

1:18,978

For more information about WFDSS:
http://wfdss.usgs.gov/wfdss/wfdss_home.html

08.09 FireLine from GDB

—	Completed Line
—	Uncontrolled Fire Edge
—	07.31 Perimeter
2000storrie_b_ba4class RAVG	
Severity	
—	1 - Unchanged
—	2 - Low
—	3 - Moderate
—	4 - High
Ownership	
—	National Forest
—	Non-National Forest
—	Existing Wilderness
—	Highways
—	Major Roads
—	Other Roads