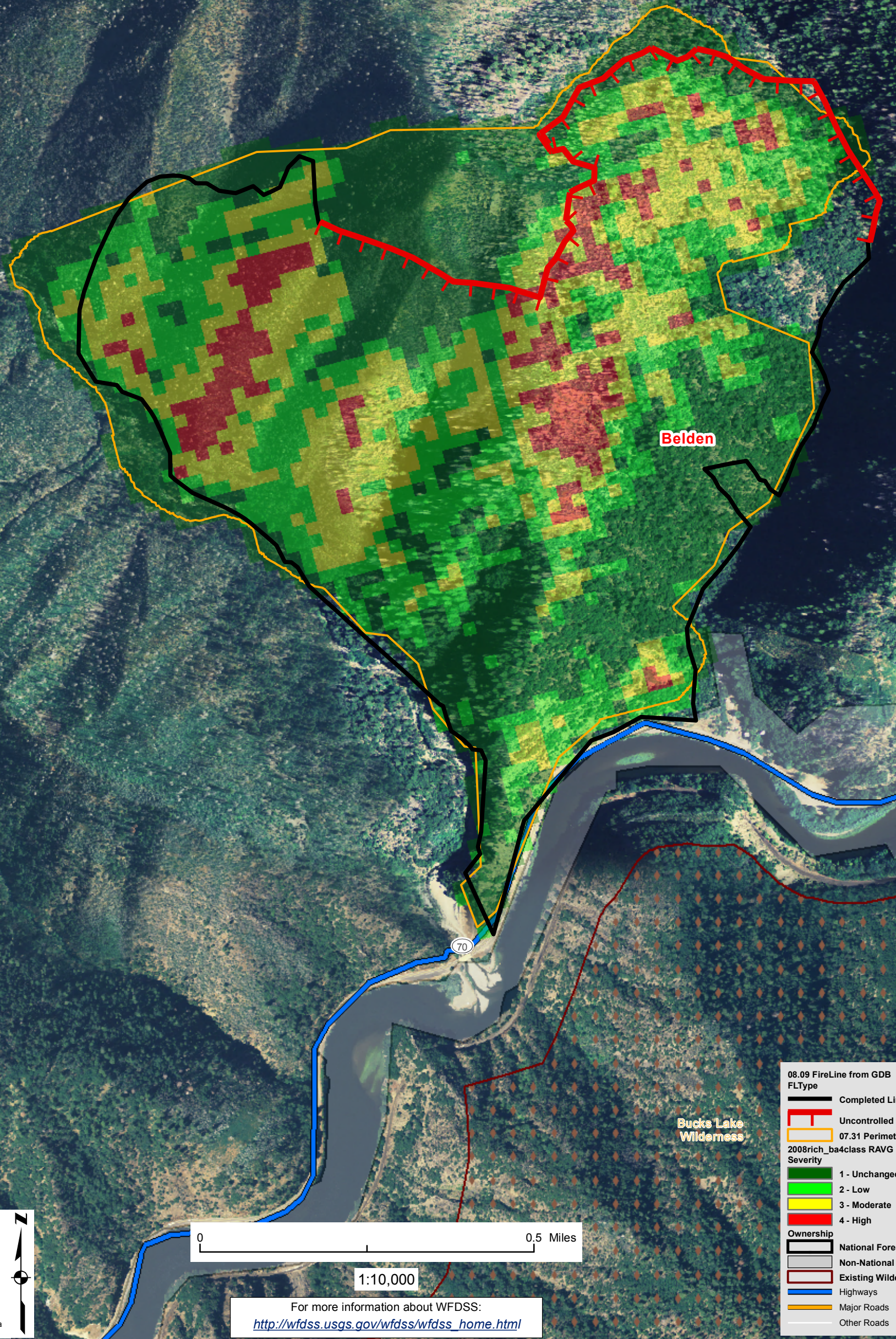


WFDSS - PNF Belden Fire (2008) Examination of Belden Fire RAVG and 8/9/2008 Firelines (Satellite data date unknown)



08.09 FireLine from GDB
FLType

- Completed Line
- Uncontrolled Fire Edge
- 07.31 Perimeter

2008rich_ba4class RAVG
Severity

- 1 - Unchanged
- 2 - Low
- 3 - Moderate
- 4 - High

Ownership

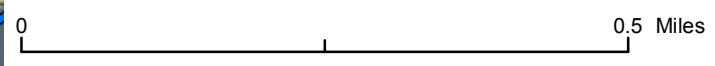
- National Forest
- Non-National Forest
- Existing Wilderness
- Highways
- Major Roads
- Other Roads

R5 FAM
Fire Behavior Branch, Predictive Services
McClellan, CA



with support from:
WFDSS
Wildland Fire
Decision Support System

RMRS
Rocky Mtn. Research Station
Note: Projection based on preliminary data



1:10,000

For more information about WFDSS:
http://wfdss.usgs.gov/wfdss/wfdss_home.html