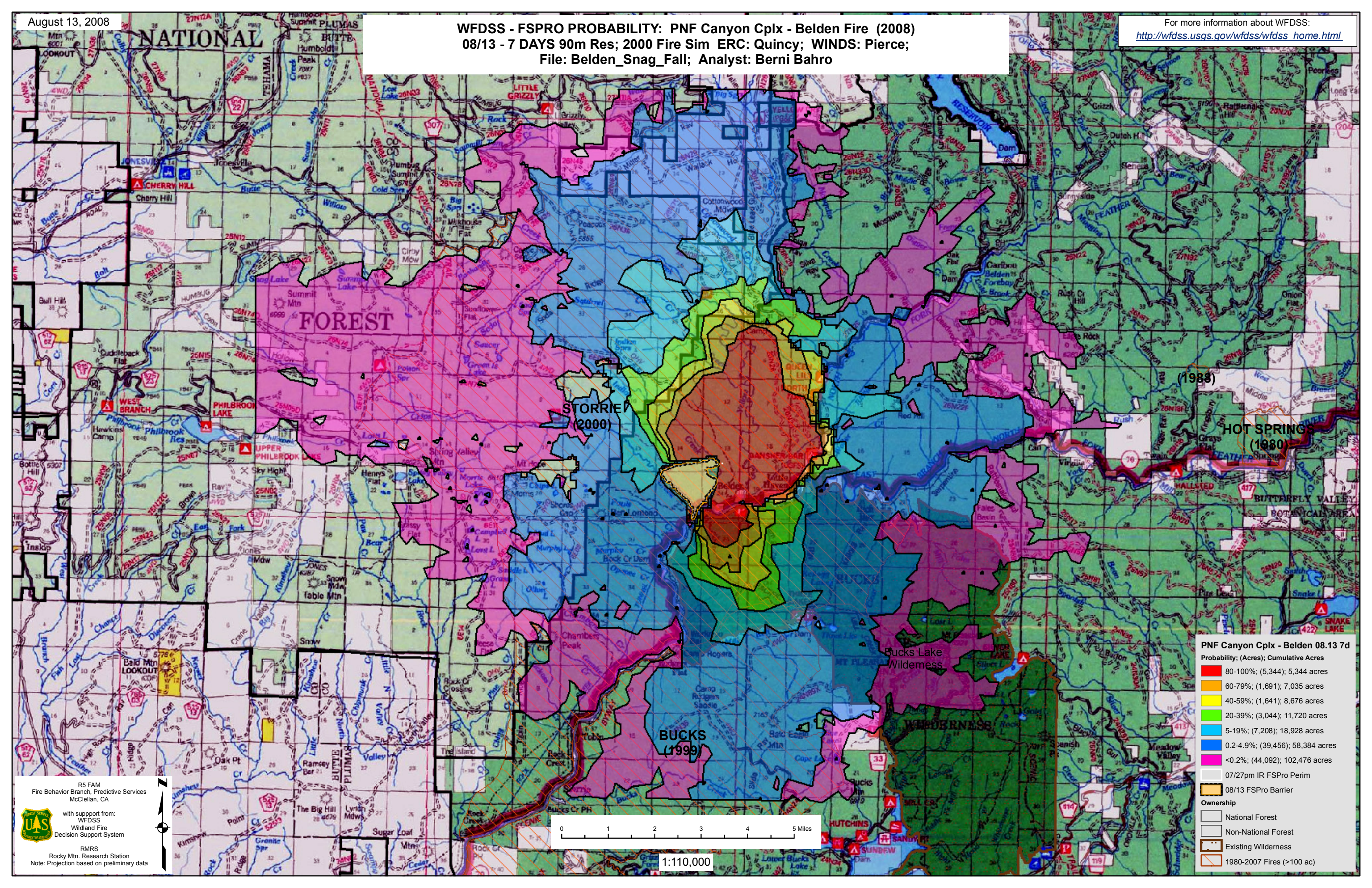


WFDSS - FSPRO PROBABILITY: PNF Canyon Cplx - Belden Fire (2008)
08/13 - 7 DAYS 90m Res; 2000 Fire Sim ERC: Quincy; WINDS: Pierce;
File: Belden_Snag_Fall; Analyst: Berni Bahro

For more information about WFDSS:
http://wfdss.usgs.gov/wfdss/wfdss_home.html



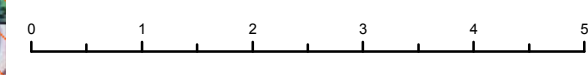
(1988)
HOT SPRINGS
(1980)
BUTTERFLY VALLEY
BOTANICAL AREA

PNF Canyon Cplx - Belden 08.13 7d
Probability; (Acres); Cumulative Acres

- 80-100%; (5,344); 5,344 acres
- 60-79%; (1,691); 7,035 acres
- 40-59%; (1,641); 8,676 acres
- 20-39%; (3,044); 11,720 acres
- 5-19%; (7,208); 18,928 acres
- 0.2-4.9%; (39,456); 58,384 acres
- <0.2%; (44,092); 102,476 acres
- 07/27pm IR FSPRO Perim
- 08/13 FSPRO Barrier

Ownership

- National Forest
- Non-National Forest
- Existing Wilderness
- 1980-2007 Fires (>100 ac)



1:110,000

R5 FAM
Fire Behavior Branch, Predictive Services
McClellan, CA

with support from:
WFDSS
Wildland Fire
Decision Support System

RMRS
Rocky Mtn. Research Station
Note: Projection based on preliminary data