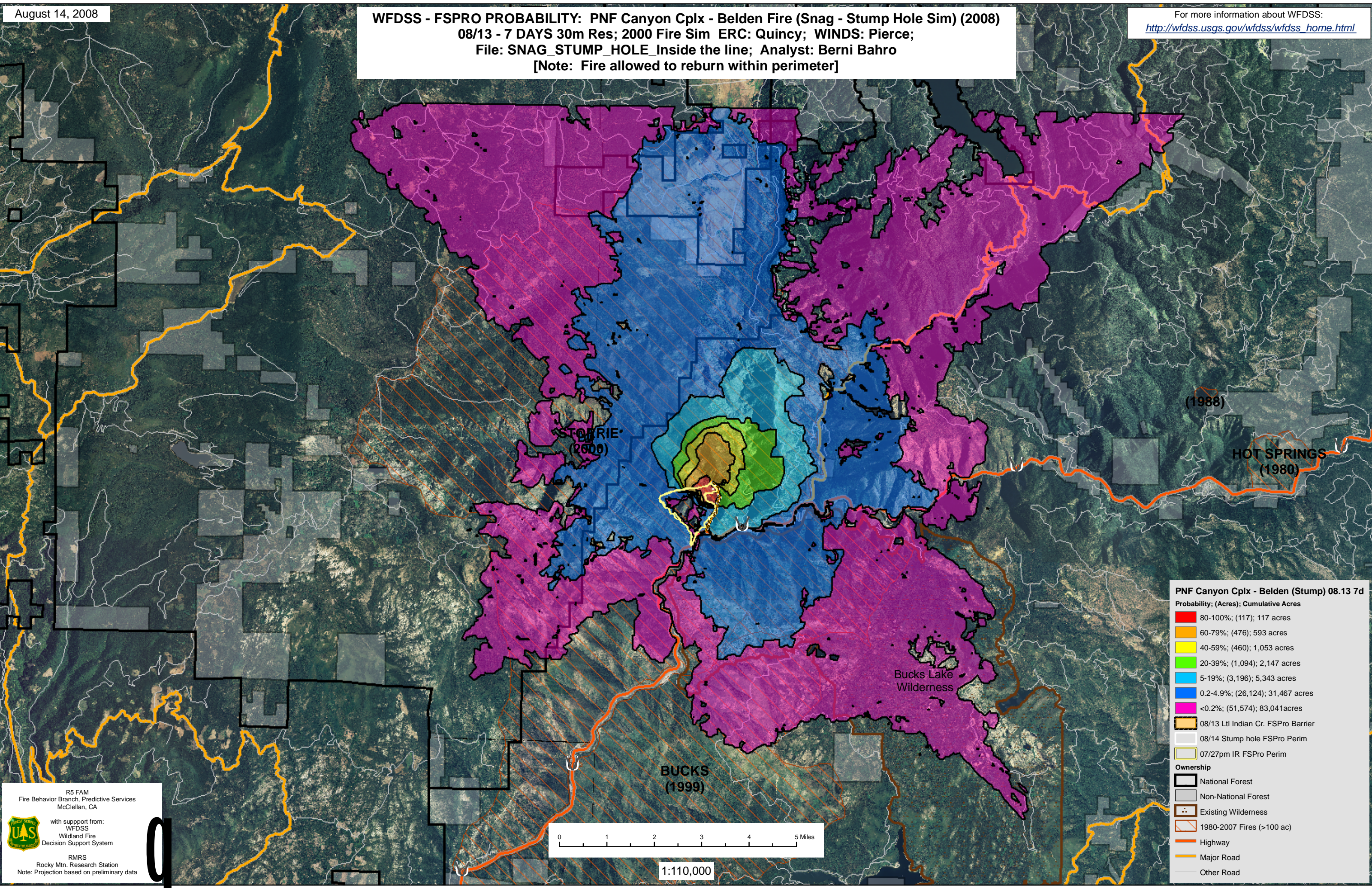


WFDSS - FSPRO PROBABILITY: PNF Canyon Cplx - Belden Fire (Snag - Stump Hole Sim) (2008)
08/13 - 7 DAYS 30m Res; 2000 Fire Sim ERC: Quincy; WINDS: Pierce;
File: SNAG_STUMP_HOLE_Inside the line; Analyst: Berni Bahro
[Note: Fire allowed to reburn within perimeter]

For more information about WFDSS:
http://wfdss.usgs.gov/wfdss/wfdss_home.html



PNF Canyon Cplx - Belden (Stump) 08.13 7d
Probability; (Acres); Cumulative Acres

- 80-100%; (117); 117 acres
- 60-79%; (476); 593 acres
- 40-59%; (460); 1,053 acres
- 20-39%; (1,094); 2,147 acres
- 5-19%; (3,196); 5,343 acres
- 0.2-4.9%; (26,124); 31,467 acres
- <0.2%; (51,574); 83,041 acres

08/13 Lt Indian Cr. FSPro Barrier
08/14 Stump hole FSPro Perim
07/27pm IR FSPro Perim

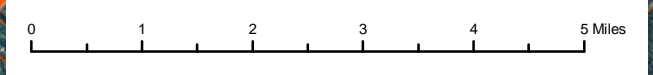
Ownership

- National Forest
- Non-National Forest
- Existing Wilderness
- 1980-2007 Fires (>100 ac)
- Highway
- Major Road
- Other Road

R5 FAM
Fire Behavior Branch, Predictive Services
McClellan, CA

with support from:
WFDSS
Wildland Fire
Decision Support System

RMRS
Rocky Mtn. Research Station
Note: Projection based on preliminary data



1:110,000