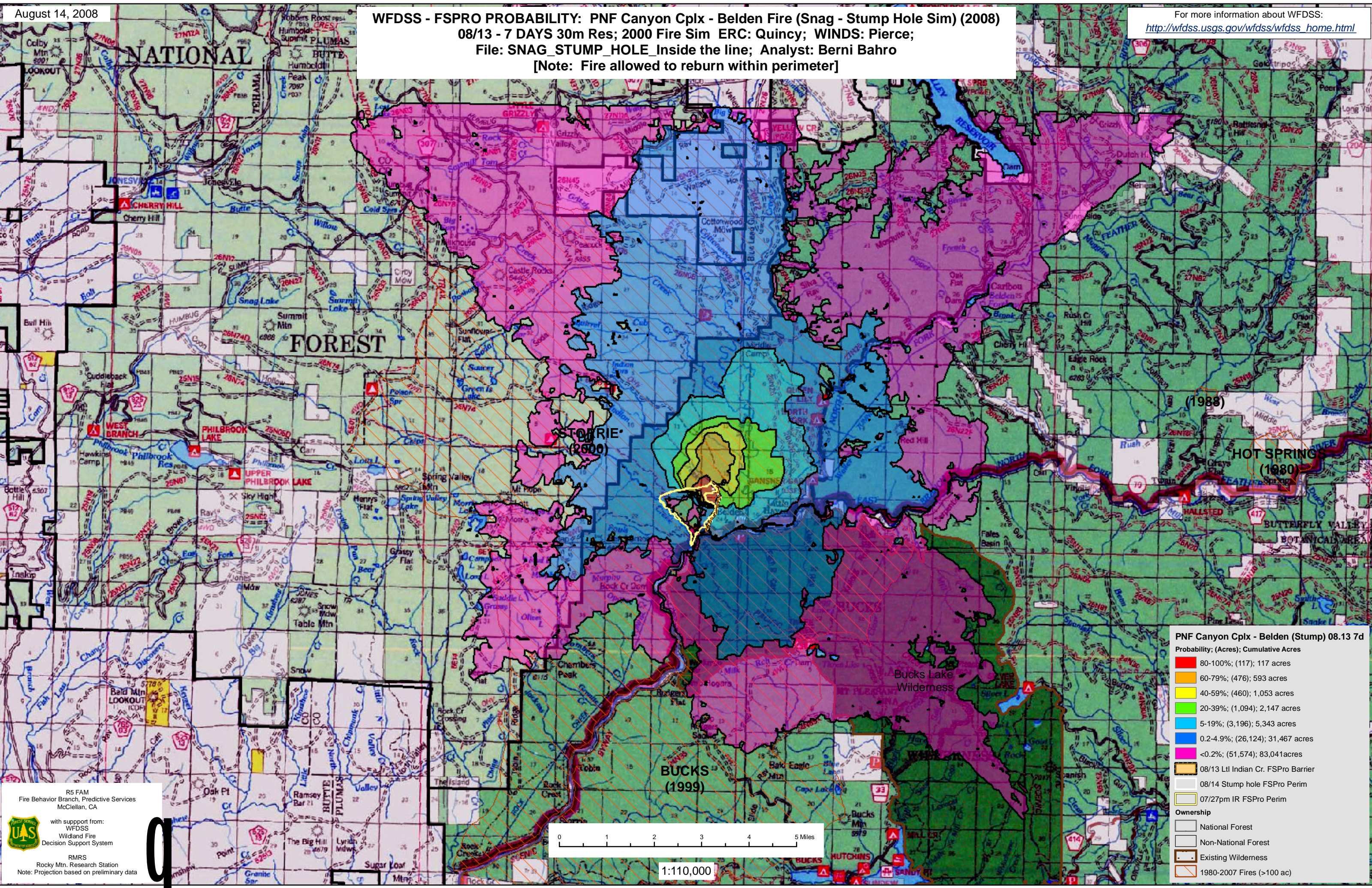


WFDSS - FSPRO PROBABILITY: PNF Canyon Cplx - Belden Fire (Snag - Stump Hole Sim) (2008)  
08/13 - 7 DAYS 30m Res; 2000 Fire Sim ERC: Quincy; WINDS: Pierce;  
File: SNAG\_STUMP\_HOLE\_Inside the line; Analyst: Berni Bahro  
[Note: Fire allowed to reburn within perimeter]

For more information about WFDSS:  
[http://wfdss.usgs.gov/wfdss/wfdss\\_home.html](http://wfdss.usgs.gov/wfdss/wfdss_home.html)



(1988)  
HOT SPRINGS (1980)  
BUTTERFLY VALLEY  
BOTANICAL AREA

**PNF Canyon Cplx - Belden (Stump) 08.13 7d**  
Probability; (Acres); Cumulative Acres

- 80-100%; (117); 117 acres
- 60-79%; (476); 593 acres
- 40-59%; (460); 1,053 acres
- 20-39%; (1,094); 2,147 acres
- 5-19%; (3,196); 5,343 acres
- 0.2-4.9%; (26,124); 31,467 acres
- <0.2%; (51,574); 83,041 acres

08/13 Lt Indian Cr. FSPro Barrier  
08/14 Stump hole FSPro Perim  
07/27pm IR FSPro Perim

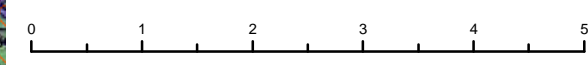
**Ownership**

- National Forest
- Non-National Forest
- Existing Wilderness
- 1980-2007 Fires (>100 ac)

R5 FAM  
Fire Behavior Branch, Predictive Services  
McClellan, CA

with support from:  
WFDSS  
Wildland Fire  
Decision Support System

RMRS  
Rocky Mtn. Research Station  
Note: Projection based on preliminary data



1:110,000