

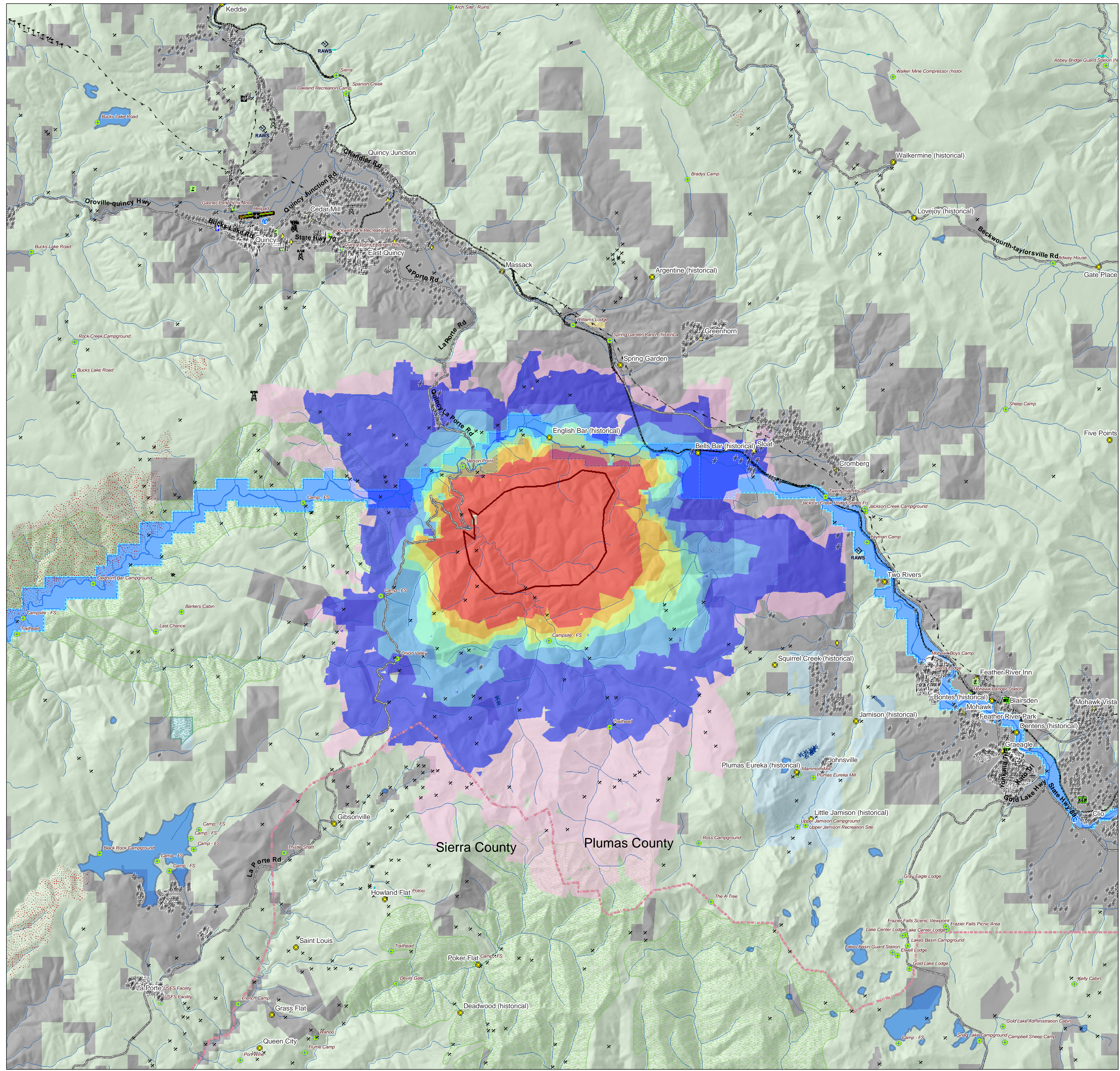


Cold, CA

23 June 2008 T1_A_080623_jd

Major Values-at-Risk per
FSPRO Fire Spread Probabilities:
7 days as of 23 June 2008

- FS Pro Fire Perimeter: 23 June
- Past Fires 1994-2007
- FSPRO Fire Spread Probabilities**
- > 80 %
- 60 - 80 %
- 40 - 60 %
- 20 - 40 %
- 5 - 20 %
- 1 - 5 %
- < 1 %
- # Building Clusters: Plumas County
- Z RAWs Stations
- [Water Supply: Intakes
- ⊙ Water Treatment Plants
- Water Pipeline - Aqueduct - Canal
- Powerlines
- D Industrial Plant
- * Power Pylon
- X Communication Towers
- ✈ Airports
- Airport Runways
- ||| Ski Resort Cables
- v Hospitals
- n Schools
- ⚡ HAZMAT: Mines
- W HAZMAT: Hazardous Waste
- Other Landmarks
- Interstates
- Major Roads
- Railways
- County Boundary
- Jurisdiction**
- Private
- State
- BIA
- BLM
- USFS
- Inventoried Roadless
- Designated Wilderness
- Wild-Scenic-Rec Rivers



*Building Clusters represent the center of parcels where county assessor records indicate taxable improvements are present. One or more structures and other improvements may exist proximate to these point locations.

**Recreation residences and special use structures data are not supplied by USFS and are not identified or analyzed in this report.

CAUTION: Defer to air photos or local knowledge for exact structure and other feature locations.