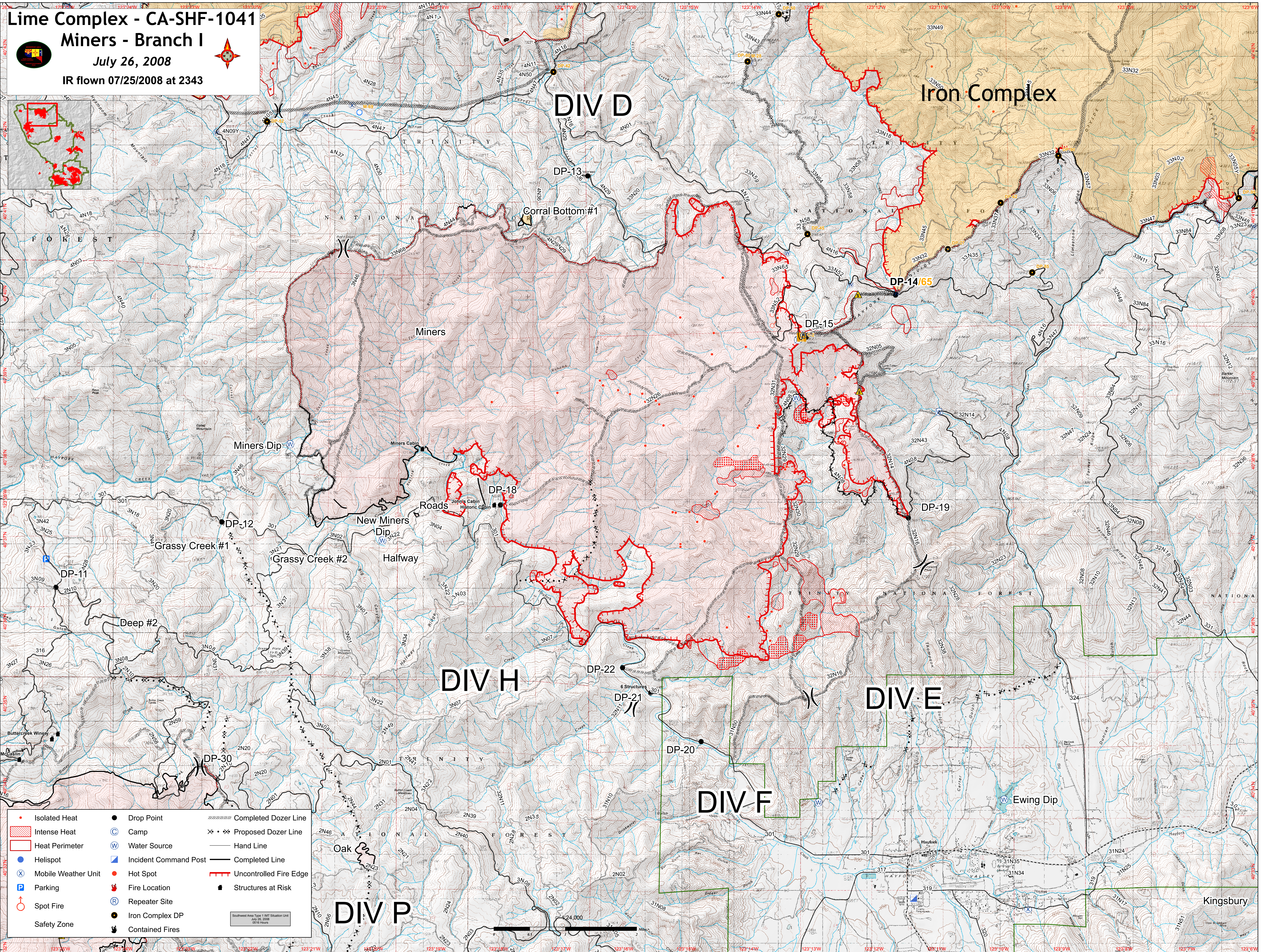
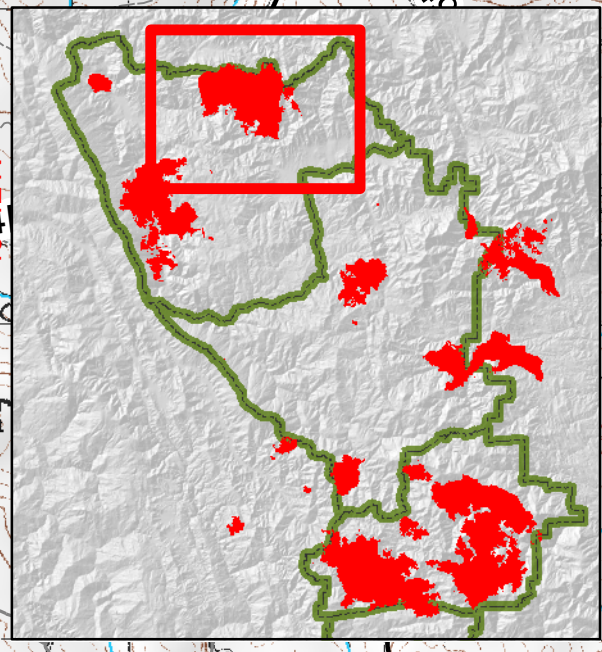


Lime Complex - CA-SHF-1041

Miners - Branch I

July 26, 2008

IR flown 07/25/2008 at 2343



- | | | |
|-----------------------|-------------------------|---------------------------|
| ● Isolated Heat | ● Drop Point | — Completed Dozer Line |
| ■ Intense Heat | ⊙ Camp | × × × Proposed Dozer Line |
| □ Heat Perimeter | ⊕ Water Source | — Hand Line |
| ● Helispot | ⊖ Incident Command Post | — Completed Line |
| ⊗ Mobile Weather Unit | ● Hot Spot | — Uncontrolled Fire Edge |
| ⊠ Parking | 🔥 Fire Location | ■ Structures at Risk |
| ♂ Spot Fire | Ⓡ Repeater Site | |
| ○ Safety Zone | ● Iron Complex DP | |
| | 🔥 Contained Fires | |

Southwest Area Type 1 IMT Situation Unit
July 26, 2008
09:16 Hours

1:24,000