

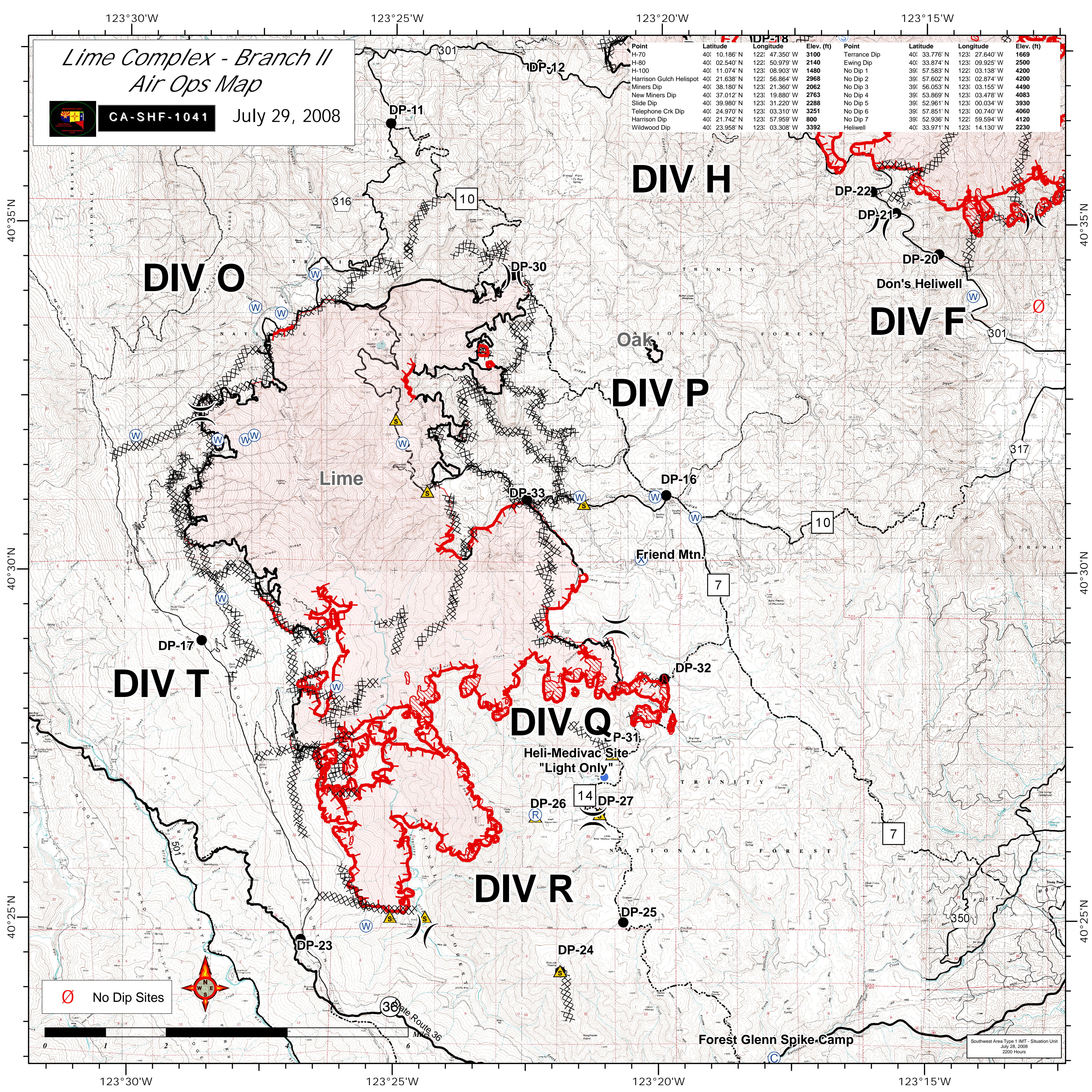
Lime Complex - Branch II Air Ops Map



CA-SHF-1041

July 29, 2008

Point	Latitude	Longitude	Elev. (ft)	Point	Latitude	Longitude	Elev. (ft)
H-70	40° 10.186' N	122° 47.350' W	3100	Terrance Dip	40° 33.776' N	123° 27.640' W	1669
H-80	40° 02.540' N	122° 50.979' W	2140	Ewing Dip	39° 57.583' N	122° 03.138' W	4200
H-100	40° 11.074' N	123° 08.903' W	1480	No Dip 1	39° 57.602' N	123° 02.874' W	4200
Harrison Gulch Helispot	40° 21.638' N	122° 56.864' W	2968	No Dip 2	39° 56.053' N	123° 03.155' W	4490
Miners Dip	40° 38.180' N	123° 21.360' W	2062	No Dip 3	39° 53.869' N	123° 03.478' W	4083
New Miners Dip	40° 37.012' N	123° 19.880' W	2763	No Dip 4	39° 52.961' N	123° 00.034' W	3930
Slide Dip	40° 39.980' N	123° 31.220' W	2288	No Dip 5	39° 57.851' N	123° 00.740' W	4060
Telephone Crk Dip	40° 24.970' N	123° 03.310' W	3251	No Dip 6	39° 52.936' N	122° 59.594' W	4120
Harrison Dip	40° 21.742' N	123° 57.959' W	800	No Dip 7	40° 33.971' N	123° 14.130' W	2230
Wildwood Dip	40° 23.958' N	123° 03.308' W	3392	Heliwell			



∅ No Dip Sites



Southwest Area Type 1 IMT - Situation Unit
July 28, 2008
2200 Hours