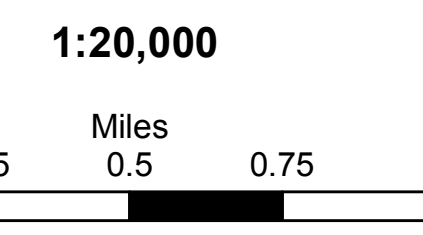
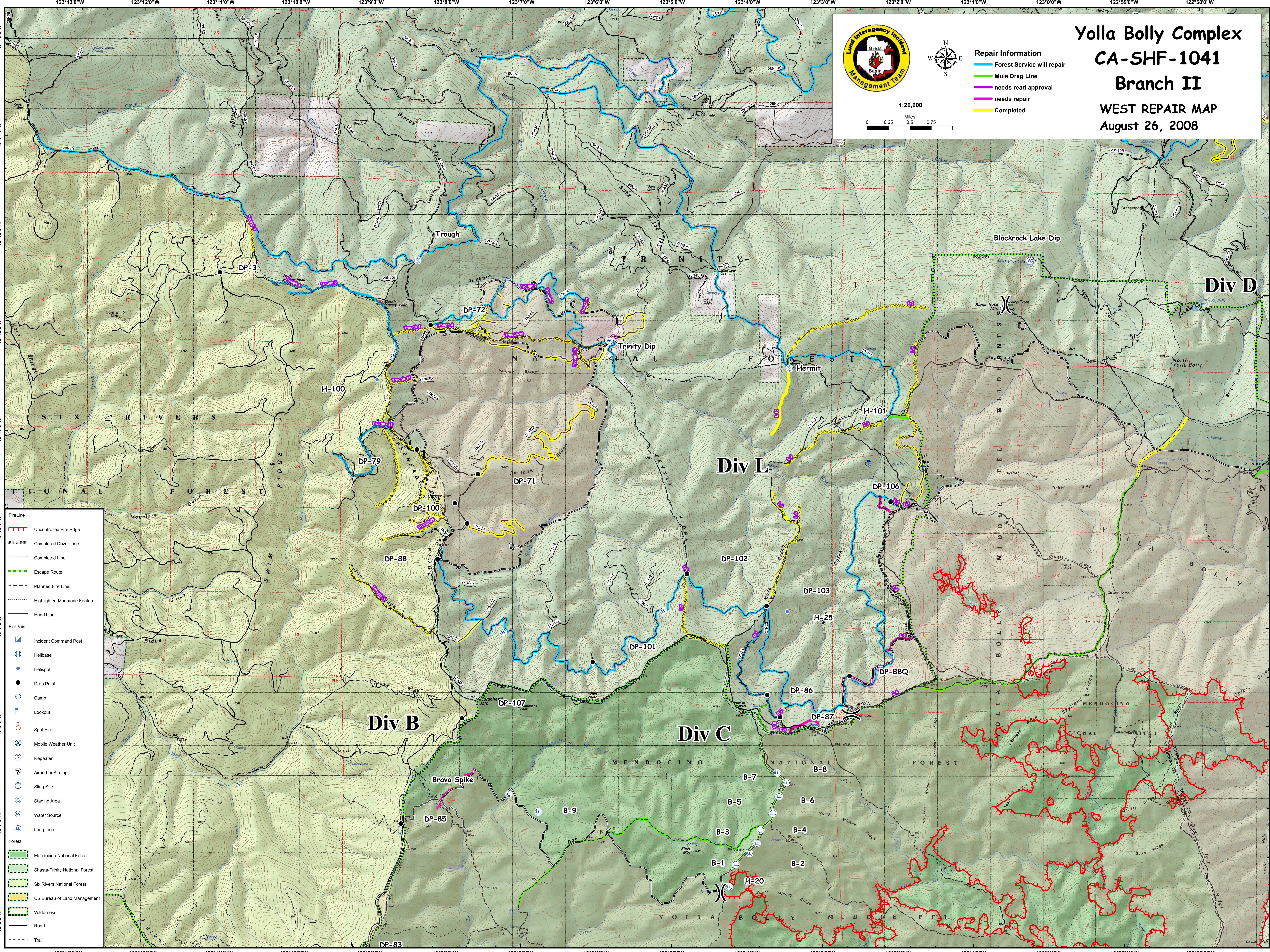


- Repair Information**
- Forest Service will repair
 - Mule Drag Line
 - needs read approval
 - needs repair
 - Completed



Yolla Bolly Complex CA-SHF-1041 Branch II WEST REPAIR MAP August 26, 2008



- FireLine**
- Uncontrolled Fire Edge
 - Completed Dozer Line
 - Completed Line
 - Escape Route
 - Planned Fire Line
 - Highlighted Manmade Feature
 - Hand Line
- FirePoint**
- Incident Command Post
 - Helibase
 - Helispot
 - Drop Point
 - Camp
 - Lookout
 - Spot Fire
 - Mobile Weather Unit
 - Repeater
 - Airport or Airstrip
 - Sling Site
 - Staging Area
 - Water Source
 - Long Line
- Forest**
- Mendocino National Forest
 - Shasta-Trinity National Forest
 - Six Rivers National Forest
 - US Bureau of Land Management
 - Wilderness
- Road**
- Road
 - Trail