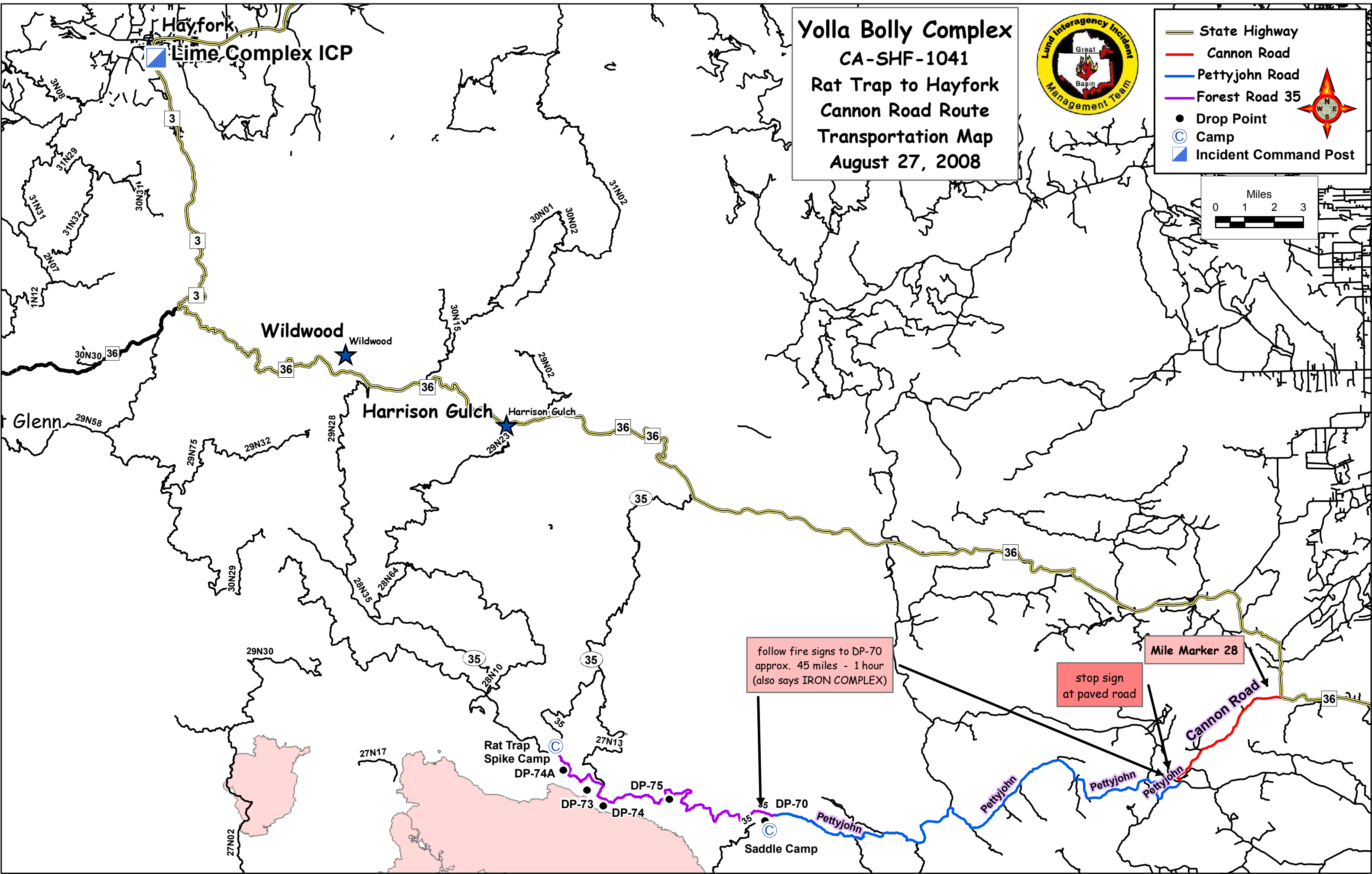


**Yolla Bolly Complex**  
CA-SHF-1041  
Rat Trap to Hayfork  
Cannon Road Route  
Transportation Map  
August 27, 2008



- State Highway
- Cannon Road
- Pettyjohn Road
- Forest Road 35
- Drop Point
- Camp
- Incident Command Post



follow fire signs to DP-70  
approx. 45 miles - 1 hour  
(also says IRON COMPLEX)

stop sign  
at paved road

Mile Marker 28

Cannon Road

Pettyjohn

Pettyjohn

Pettyjohn

Pettyjohn

Hayfork

Lime Complex ICP

Wildwood

Wildwood

Harrison Gulch

Harrison Gulch

Glenn

Rat Trap  
Spike Camp  
DP-74A

DP-75

DP-73

DP-74

DP-70

Saddle Camp