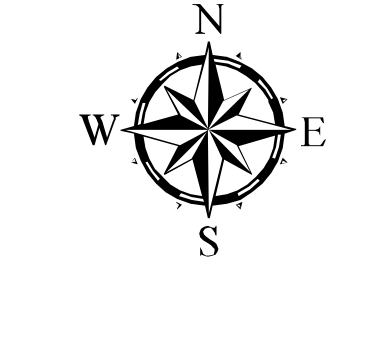
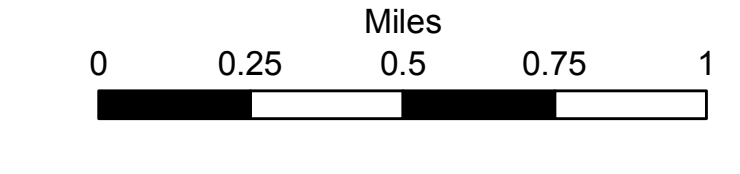


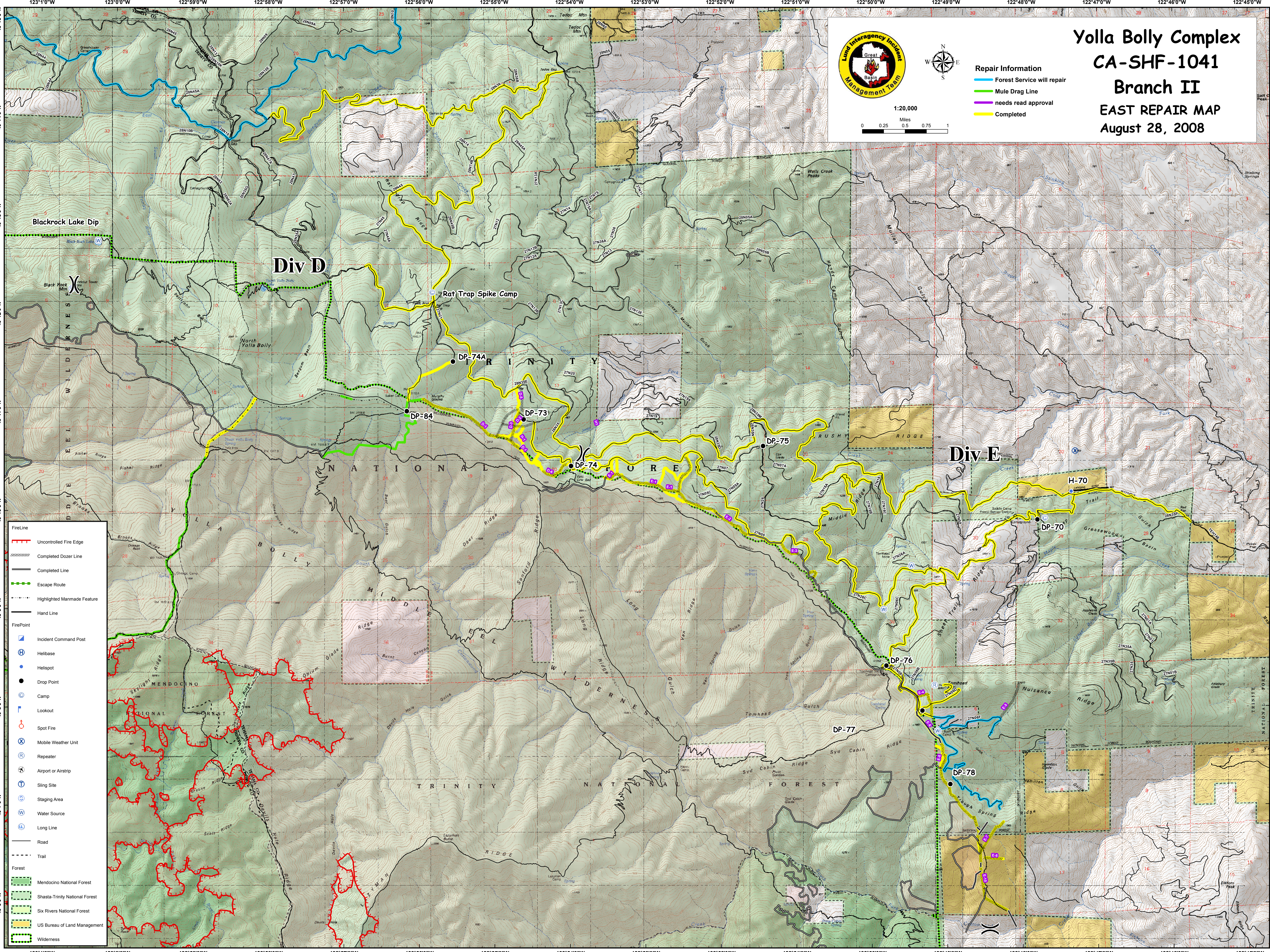
# Yolla Bolly Complex CA-SHF-1041 Branch II EAST REPAIR MAP August 28, 2008



1:20,000



- Repair Information**
- Forest Service will repair
  - Mule Drag Line
  - needs read approval
  - Completed



- FireLine**
- Uncontrolled Fire Edge
  - Completed Dozer Line
  - Completed Line
  - - - Escape Route
  - - - Highlighted Manmade Feature
  - Hand Line
- FirePoint**
- Incident Command Post
  - H Helibase
  - Helispot
  - Drop Point
  - C Camp
  - L Lookout
  - Spot Fire
  - X Mobile Weather Unit
  - R Repeater
  - A Airport or Airstrip
  - T Sling Site
  - C Staging Area
  - W Water Source
  - L Long Line
  - Road
  - - - Trail
- Forest**
- Mendocino National Forest
  - Shasta-Trinity National Forest
  - Six Rivers National Forest
  - US Bureau of Land Management
  - Wilderness