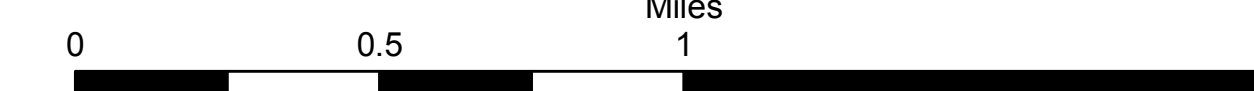
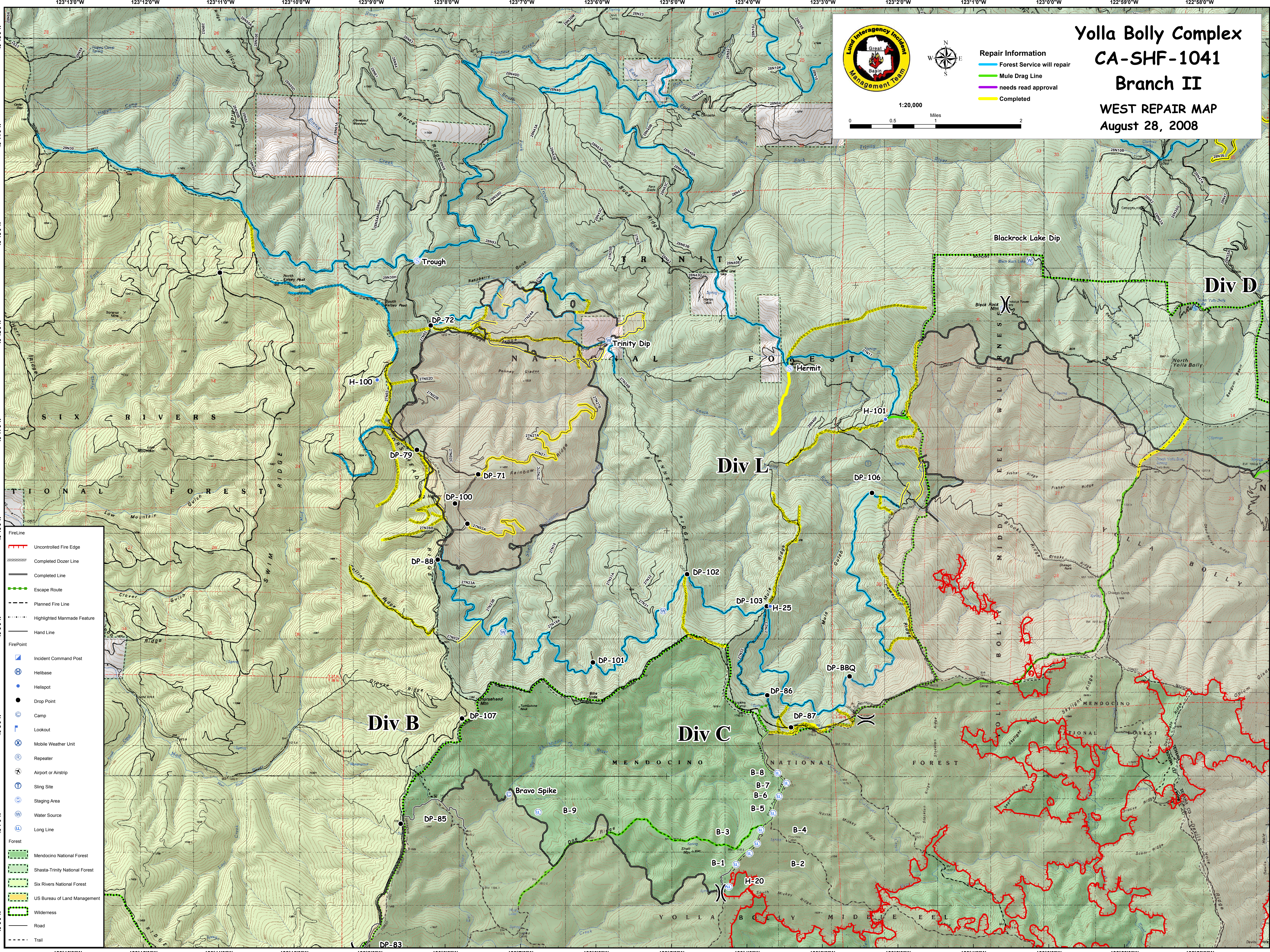


- Repair Information**
- Forest Service will repair
  - Mule Drag Line
  - needs read approval
  - Completed

1:20,000



# Yolla Bolly Complex CA-SHF-1041 Branch II WEST REPAIR MAP August 28, 2008



- FireLine**
- Uncontrolled Fire Edge
  - Completed Dozer Line
  - Completed Line
  - Escape Route
  - Planned Fire Line
  - Highlighted Manmade Feature
  - Hand Line
- FirePoint**
- Incident Command Post
  - Helibase
  - Helispot
  - Drop Point
  - Camp
  - Lookout
  - Mobile Weather Unit
  - Repeater
  - Airport or Airstrip
  - Sling Site
  - Staging Area
  - Water Source
  - Long Line
- Forest**
- Mendocino National Forest
  - Shasta-Trinity National Forest
  - Six Rivers National Forest
  - US Bureau of Land Management
  - Wilderness
- Other**
- Road
  - Trail