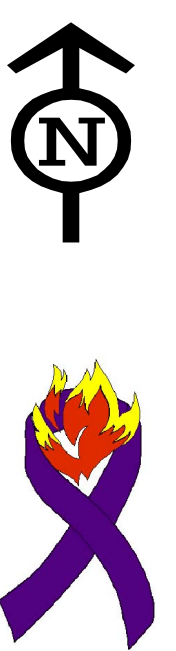




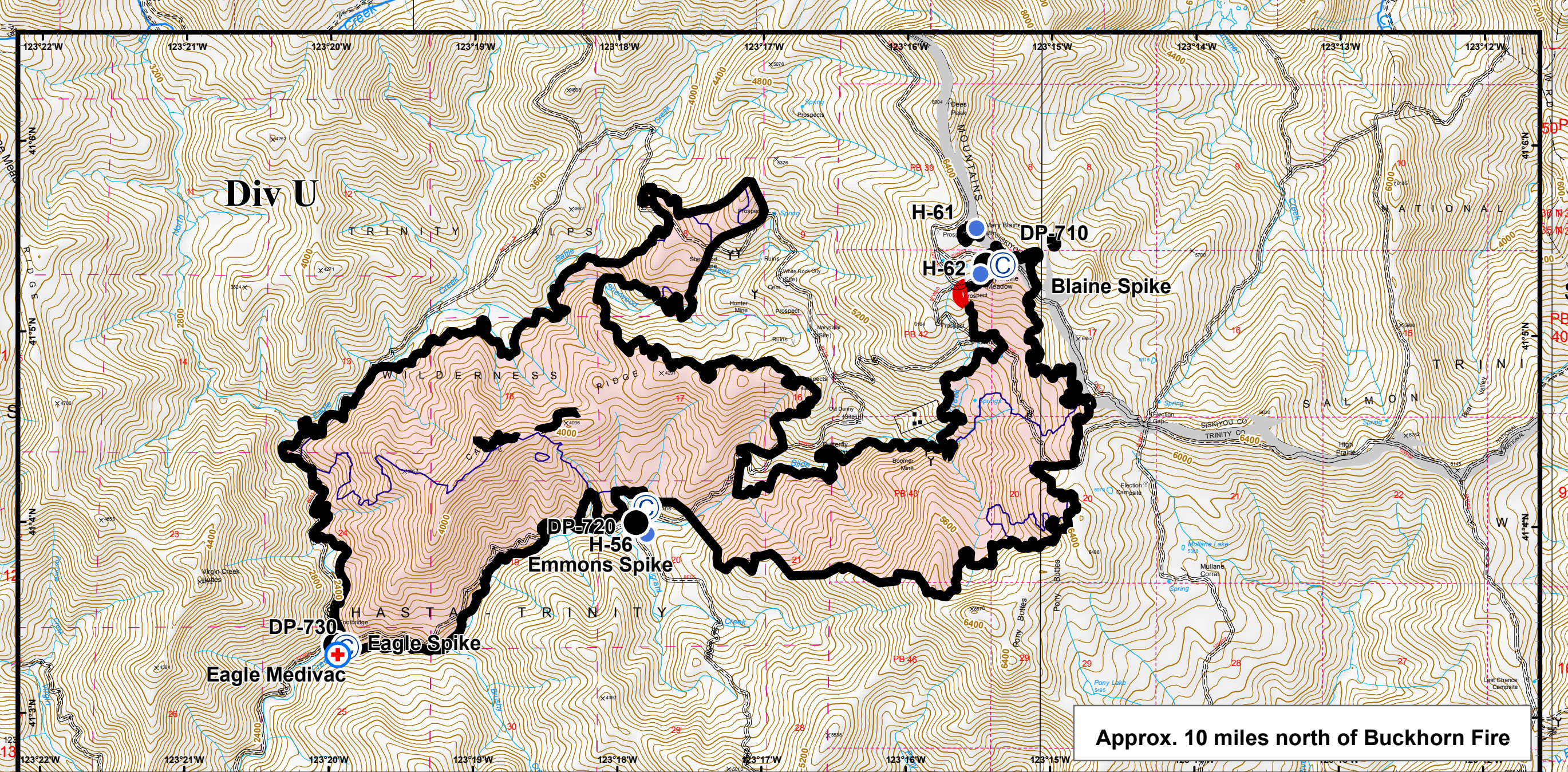
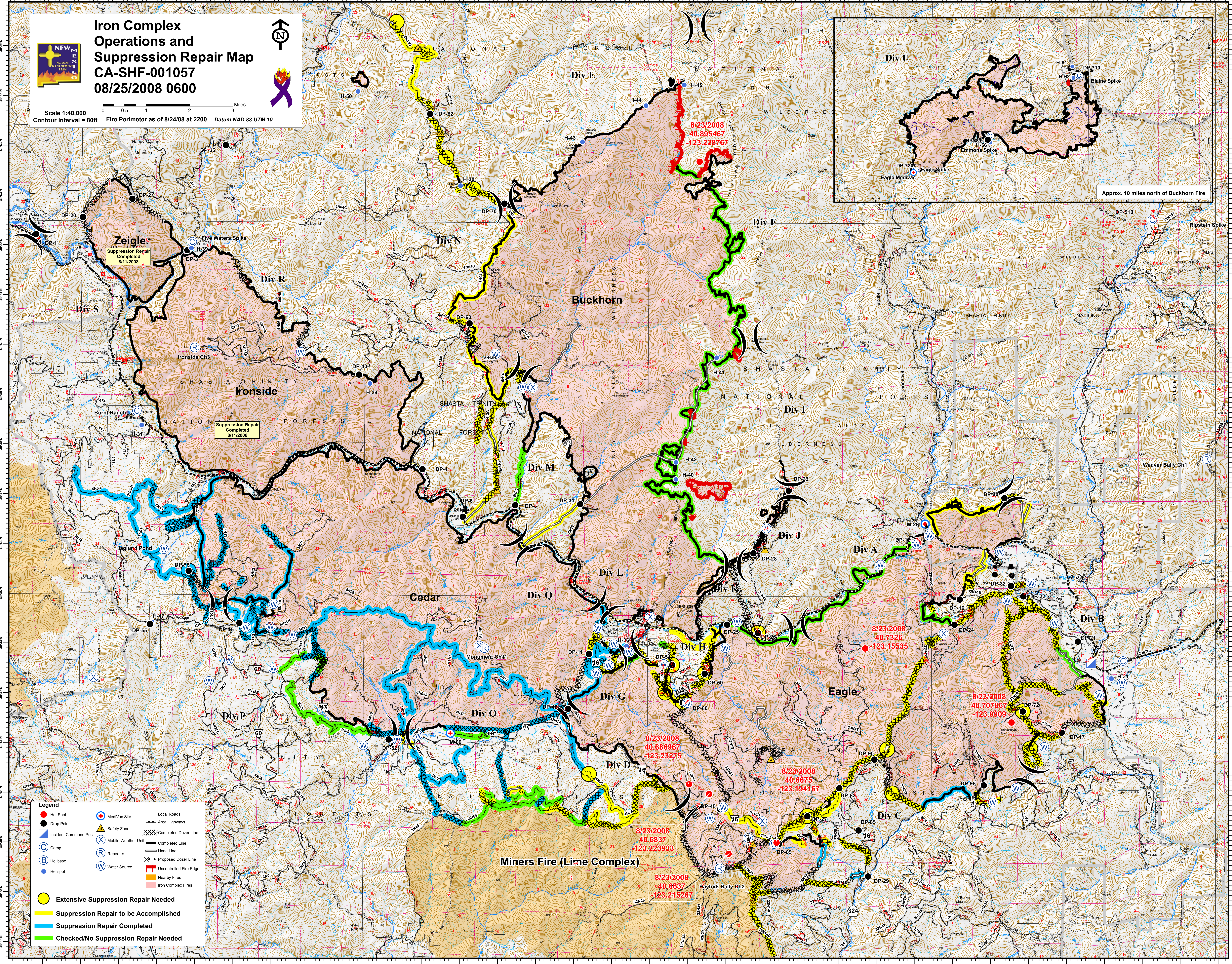
Iron Complex Operations and Suppression Repair Map

CA-SHF-001057

08/25/2008 0600



Scale 1:40,000
 Contour Interval = 80ft
 Fire Perimeter as of 8/24/08 at 2200
 Datum NAD 83 UTM 10



Zeigle:
 Suppression Repair Completed
 8/11/2008

Suppression Repair Completed
 8/11/2008

8/23/2008
 40.895467
 -123.228767

8/23/2008
 40.7326
 -123.15535

8/23/2008
 40.707867
 -123.0909

8/23/2008
 40.686967
 -123.23275

8/23/2008
 40.6675
 -123.194167

8/23/2008
 40.6837
 -123.223933

8/23/2008
 40.6637
 -123.215267

- Legend**
- Hot Spot
 - Drop Point
 - ⊕ Incident Command Post
 - ⊕ Camp
 - ⊕ Helibase
 - ⊕ Helispot
 - ⊕ MediVac Site
 - ⊕ Safety Zone
 - ⊕ Mobile Weather Unit
 - ⊕ Repeater
 - ⊕ Water Source
 - Local Roads
 - Area Highways
 - ⊗ Completed Dozer Line
 - ⊗ Completed Line
 - ⊗ Hand Line
 - ⊗ Proposed Dozer Line
 - ⊗ Uncontrolled Fire Edge
 - ⊗ Nearby Fires
 - ⊗ Iron Complex Fires
- Extensive Suppression Repair Needed
 ■ Suppression Repair to be Accomplished
 ■ Suppression Repair Completed
 ■ Checked/No Suppression Repair Needed

Miners Fire (Lime Complex)