
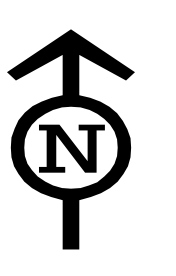

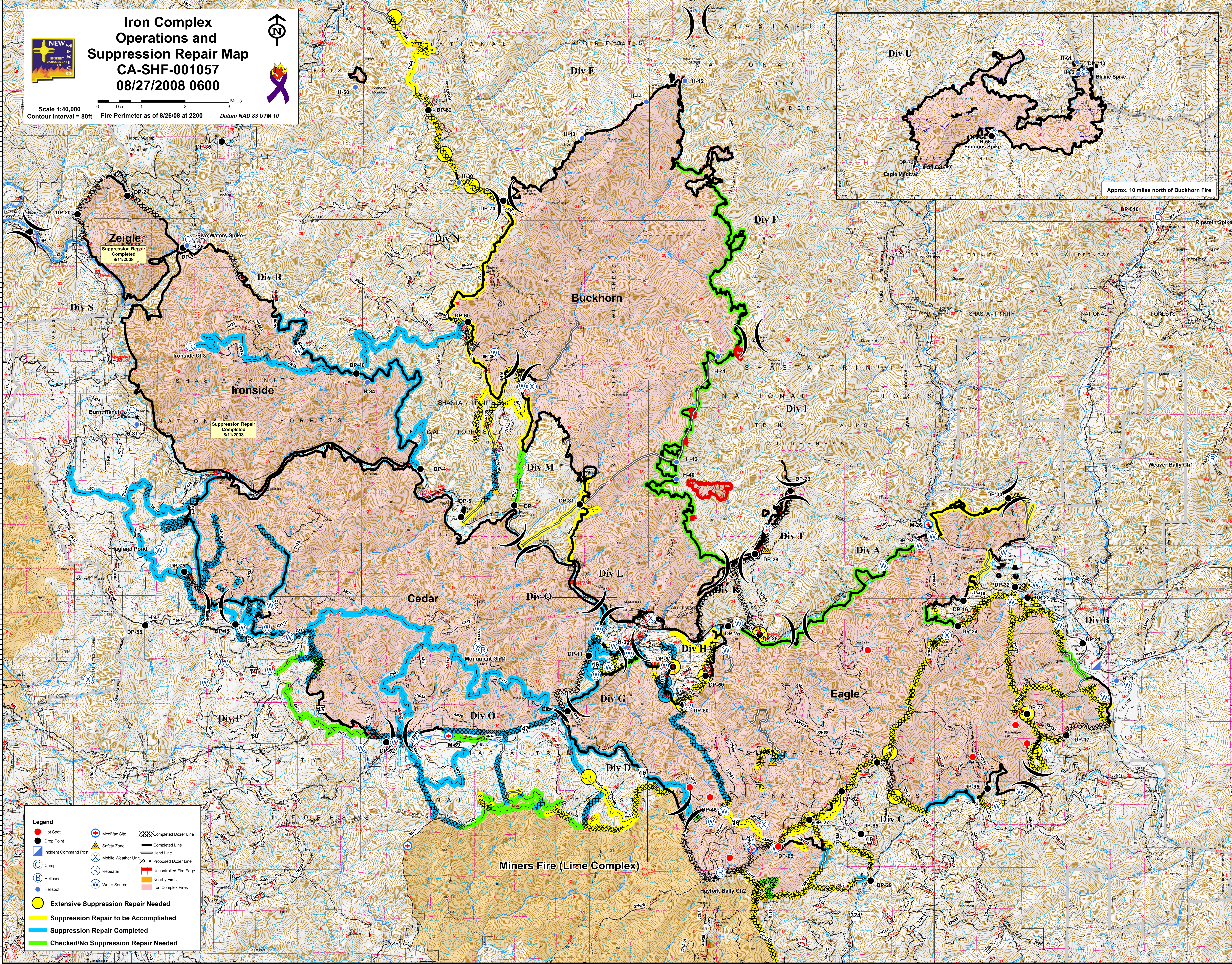
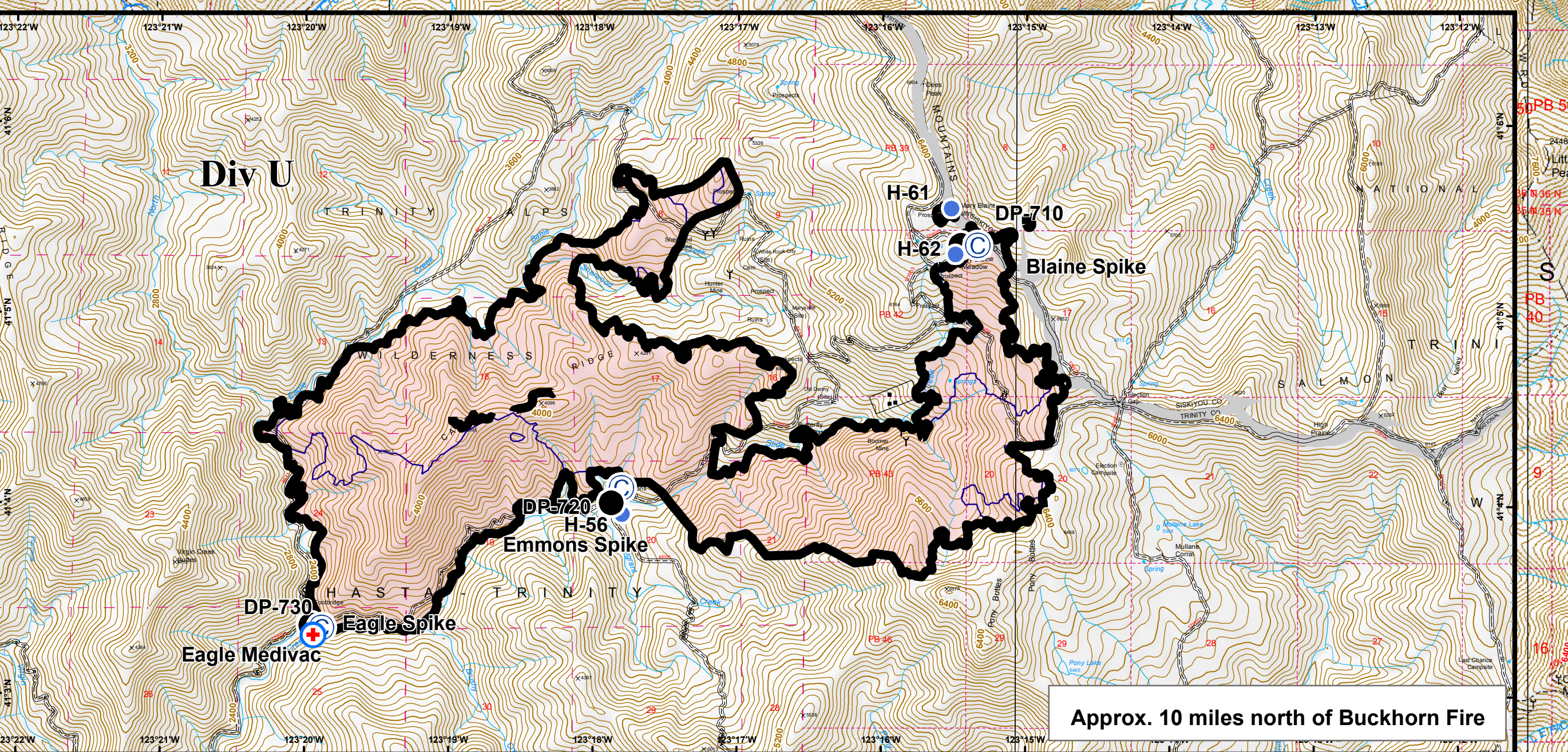


Iron Complex Operations and Suppression Repair Map
CA-SHF-001057
08/27/2008 0600

Scale 1:40,000
 Contour Interval = 80ft
 Fire Perimeter as of 8/26/08 at 2200
 Datum NAD 83 UTM 10



- Legend**
- Hot Spot
 - Drop Point
 - ⊕ Incident Command Post
 - ⊕ Camp
 - ⊕ Helibase
 - ⊕ Helispot
 - ⊕ MediVac Site
 - ⊕ Safety Zone
 - ⊕ Mobile Weather Unit
 - ⊕ Repeater
 - ⊕ Water Source
 - ⊕ Completed Dozer Line
 - ⊕ Hand Line
 - ⊕ Proposed Dozer Line
 - ⊕ Uncontrolled Fire Edge
 - ⊕ Nearby Fires
 - ⊕ Iron Complex Fires
 - ⊕ Extensive Suppression Repair Needed
 - ⊕ Suppression Repair to be Accomplished
 - ⊕ Suppression Repair Completed
 - ⊕ Checked/No Suppression Repair Needed