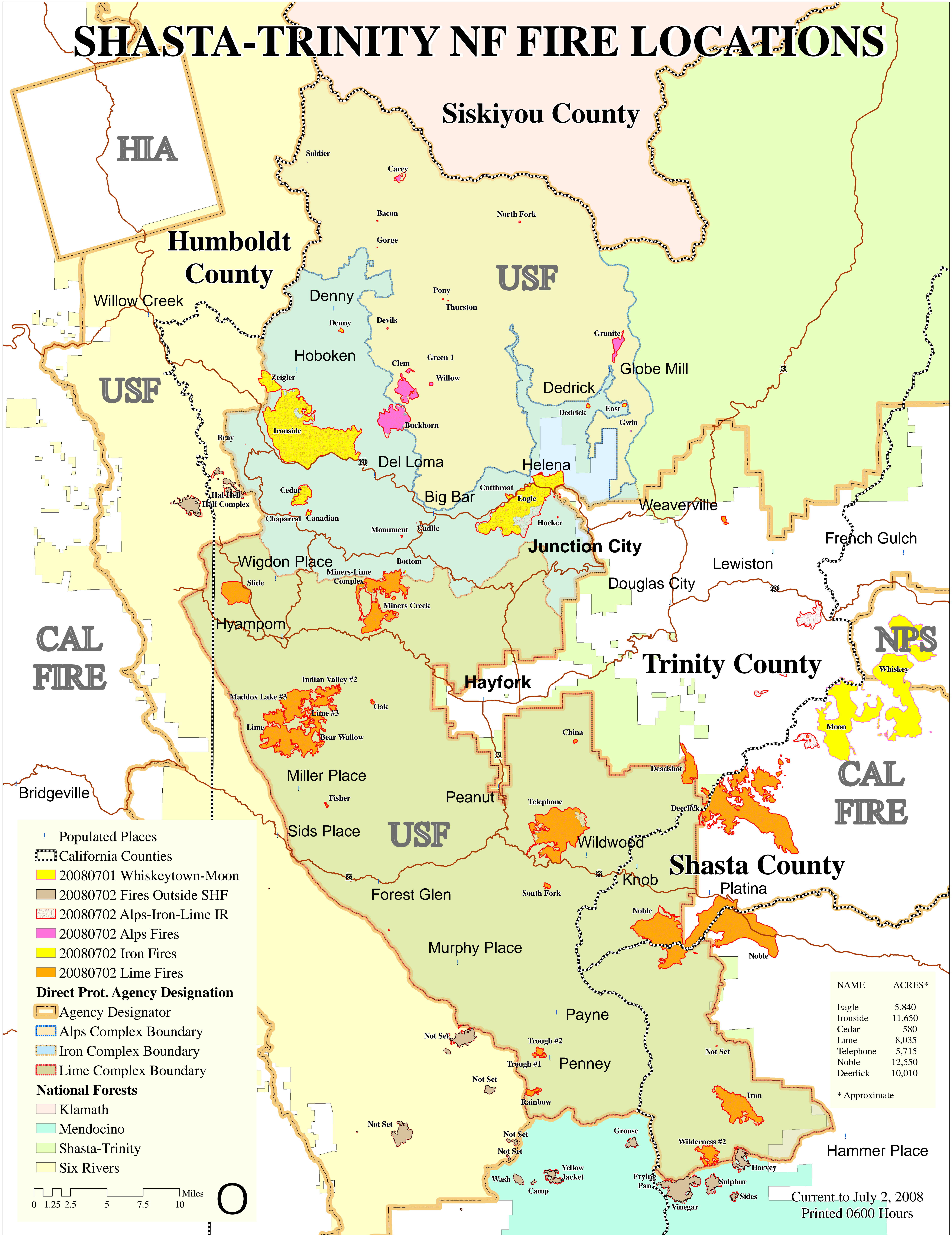


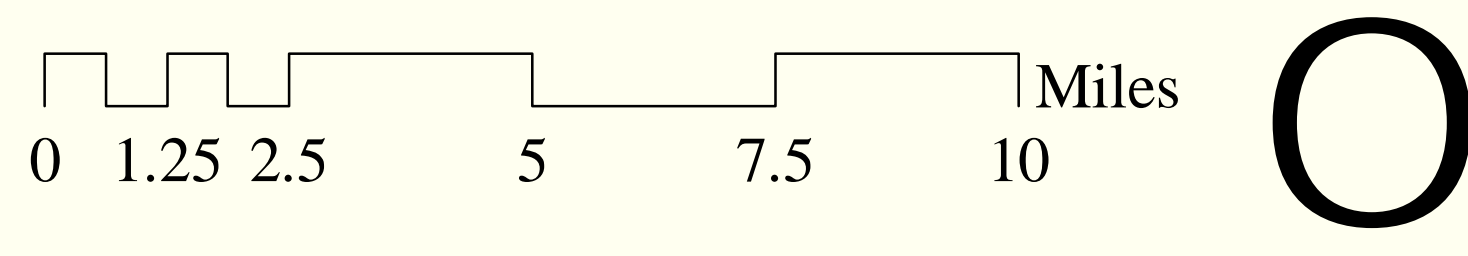
SHASTA-TRINITY NF FIRE LOCATIONS



- Populated Places
- California Counties
- 20080701 Whiskeytown-Moon
- 20080702 Fires Outside SHF
- 20080702 Alps-Iron-Lime IR
- 20080702 Alps Fires
- 20080702 Iron Fires
- 20080702 Lime Fires
- Direct Prot. Agency Designation**
- Agency Designator
- Alps Complex Boundary
- Iron Complex Boundary
- Lime Complex Boundary
- National Forests**
- Klamath
- Mendocino
- Shasta-Trinity
- Six Rivers

NAME	ACRES*
Eagle	5,840
Ironside	11,650
Cedar	580
Lime	8,035
Telephone	5,715
Noble	12,550
Deerlick	10,010

* Approximate



Current to July 2, 2008
Printed 0600 Hours