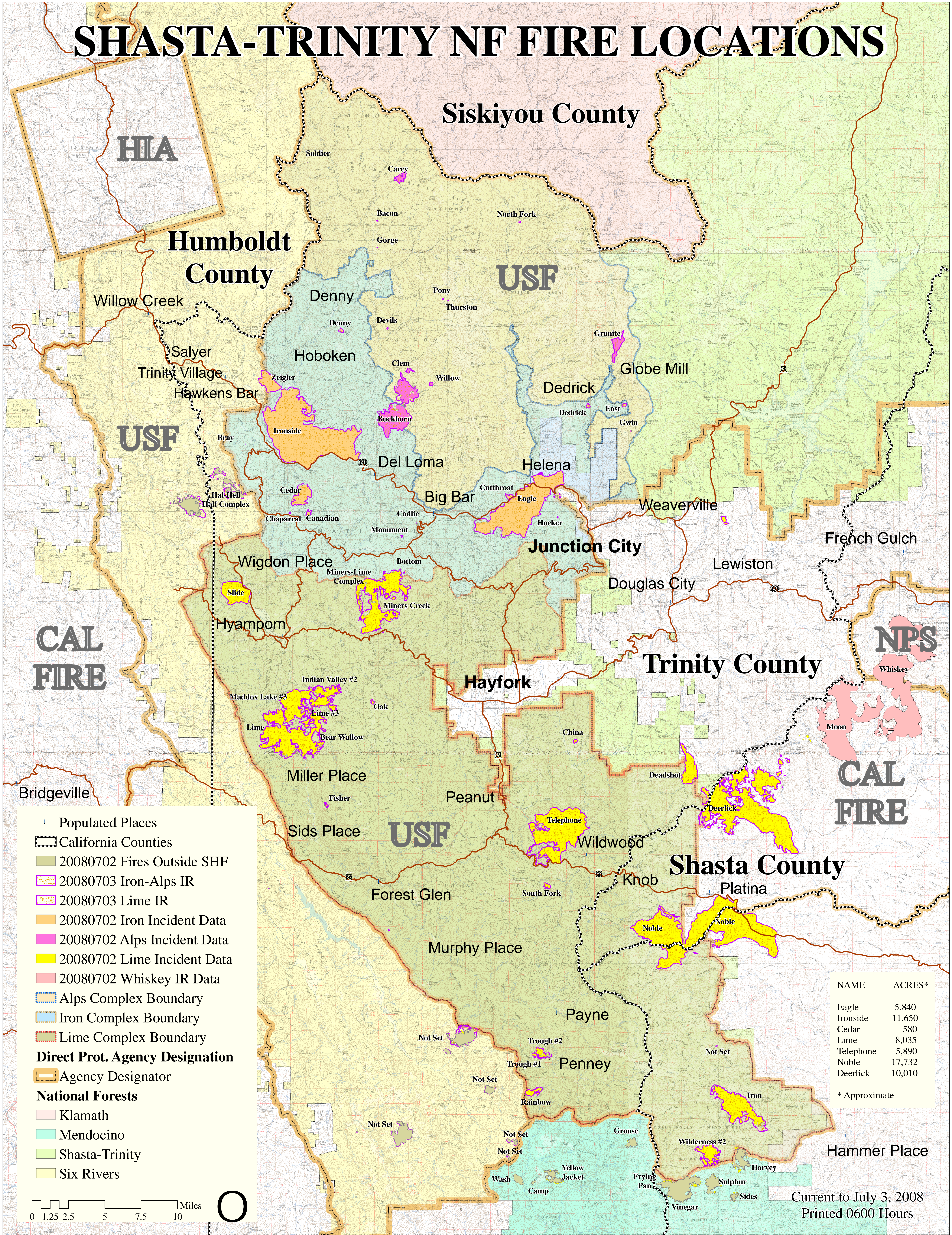


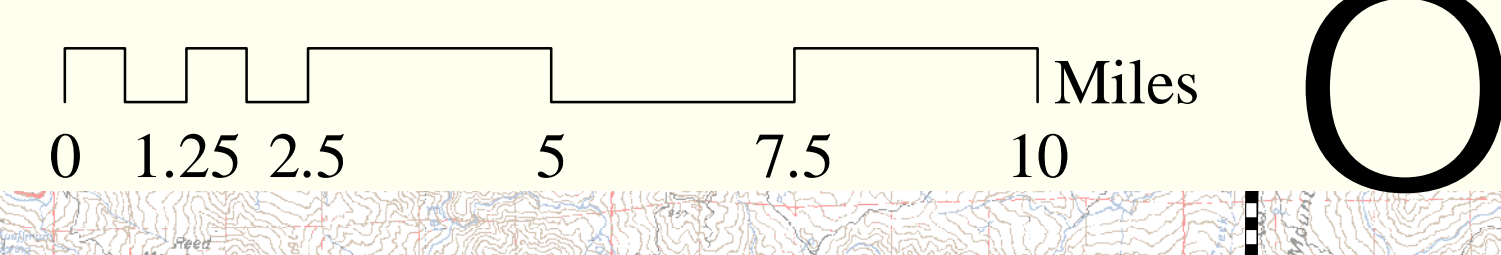
# SHASTA-TRINITY NF FIRE LOCATIONS



- Populated Places
- ▭ California Counties
- ▭ 20080702 Fires Outside SHF
- ▭ 20080703 Iron-Alps IR
- ▭ 20080703 Lime IR
- ▭ 20080702 Iron Incident Data
- ▭ 20080702 Alps Incident Data
- ▭ 20080702 Lime Incident Data
- ▭ 20080702 Whiskey IR Data
- ▭ Alps Complex Boundary
- ▭ Iron Complex Boundary
- ▭ Lime Complex Boundary
- Direct Prot. Agency Designation**
- ▭ Agency Designator
- National Forests**
- ▭ Klamath
- ▭ Mendocino
- ▭ Shasta-Trinity
- ▭ Six Rivers

| NAME      | ACRES* |
|-----------|--------|
| Eagle     | 5,840  |
| Ironside  | 11,650 |
| Cedar     | 580    |
| Lime      | 8,035  |
| Telephone | 5,890  |
| Noble     | 17,732 |
| Deerlick  | 10,010 |

\* Approximate



Current to July 3, 2008  
Printed 0600 Hours