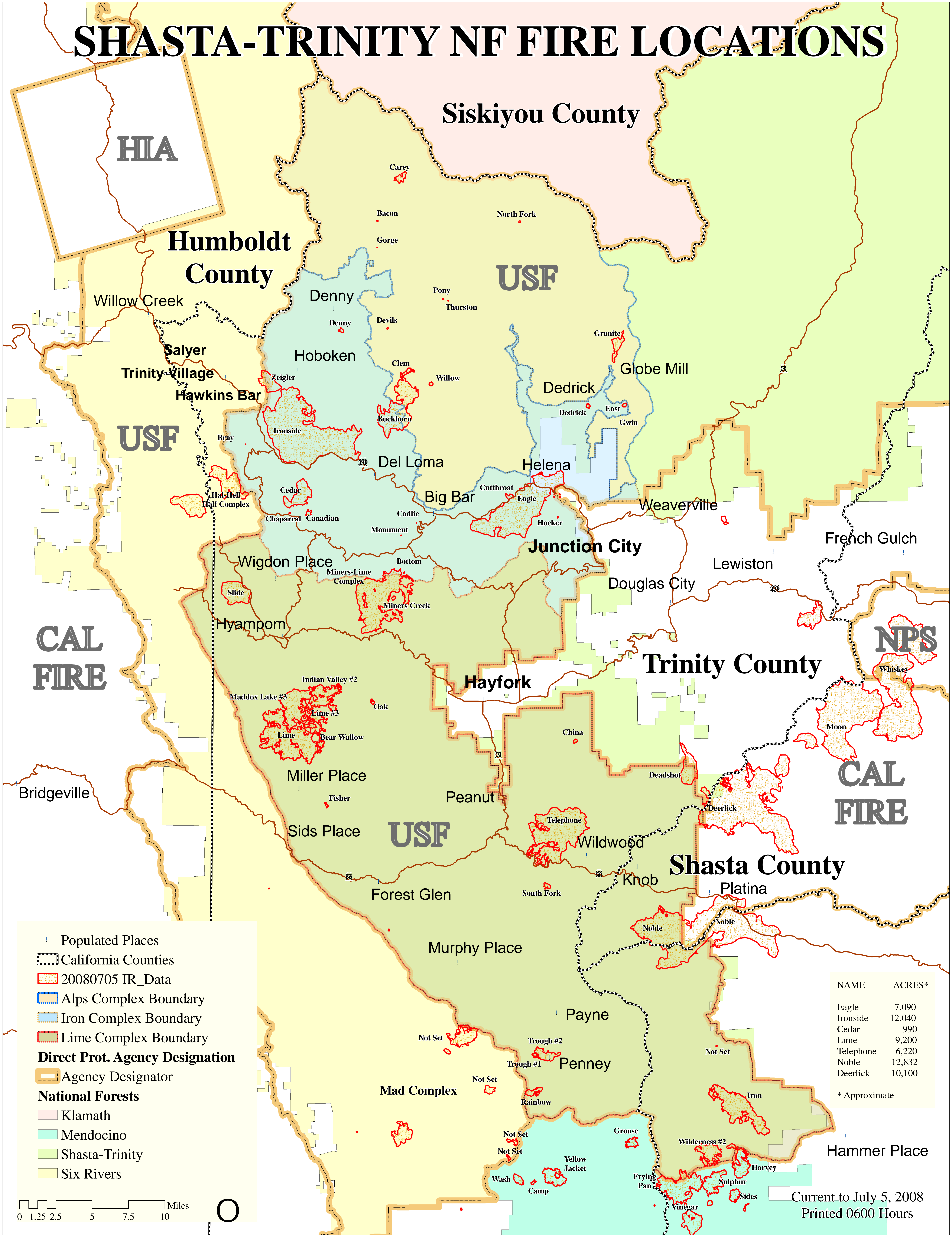


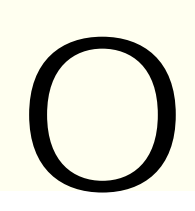
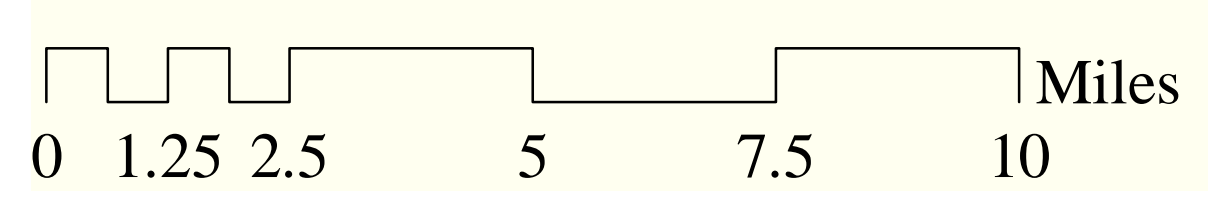
SHASTA-TRINITY NF FIRE LOCATIONS



- Populated Places
- California Counties
- 20080705 IR_Data
- Alps Complex Boundary
- Iron Complex Boundary
- Lime Complex Boundary
- Direct Prot. Agency Designation**
- Agency Designator
- National Forests**
- Klamath
- Mendocino
- Shasta-Trinity
- Six Rivers

NAME	ACRES*
Eagle	7,090
Ironside	12,040
Cedar	990
Lime	9,200
Telephone	6,220
Noble	12,832
Deerlick	10,100

* Approximate



Current to July 5, 2008
Printed 0600 Hours