

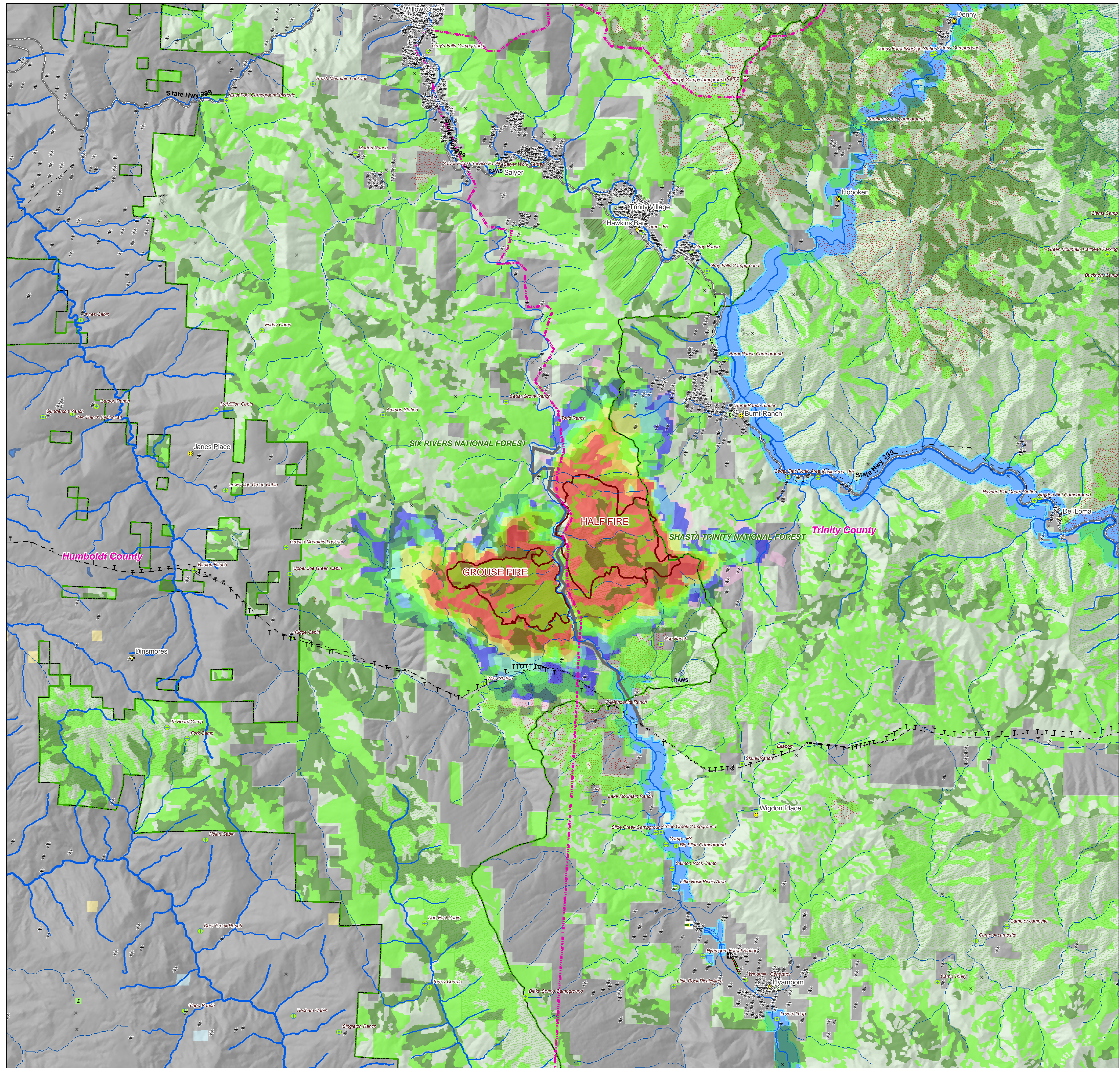


**Hells Half Complex, CA**

10 July 2008 T1\_A\_080710\_jk

Major Values-at-Risk per  
FSPRO Fire Spread Probabilities:  
7 days as of 9 July 2008

- FSPRO Fire Perimeter: 9 July AM
- FSPRO Barrier: 29 June PM
- Past Fires 1994-2007
- FSPRO Fire Spread Probabilities**
- > 80 %
- 60 - 80 %
- 40 - 60 %
- 20 - 40 %
- 5 - 20 %
- 1 - 5 %
- < 1 %
- # Building Clusters
- Z RAWs Stations
- Water Supply: Intakes
- Water Treatment Plants
- Water Pipeline - Aqueduct - Canal
- Powerlines
- D Industrial Plant
- \* Power Pylon
- Power or Pumping Substation
- X Communication Towers
- Æ Airports
- Airport Runways
- n Schools
- HAZMAT: Mines
- Other Landmarks
- Major Roads
- County Boundary
- National Forest Boundaries
- Tier II Assets**
- Spotted Owl Habitat**
- Foraging
- Nesting & Roosting
- Jurisdiction**
- Private
- State
- BLM
- USFS
- Inventoried Roadless
- Designated Wilderness
- Primitive RNA
- Wild-Scenic-Rec Rivers



\*Building Clusters represent the center of parcels where county assessor records indicate taxable improvements are present. One or more structures and other improvements may exist proximate to these point locations.

\*\*Recreation residences and special use structures data are not available from USFS and are not identified or analyzed in this report.

\*\*\*Mines may pose a threat to fire fighter safety.

CAUTION: Defer to air photos or local knowledge for exact structure and other feature locations.