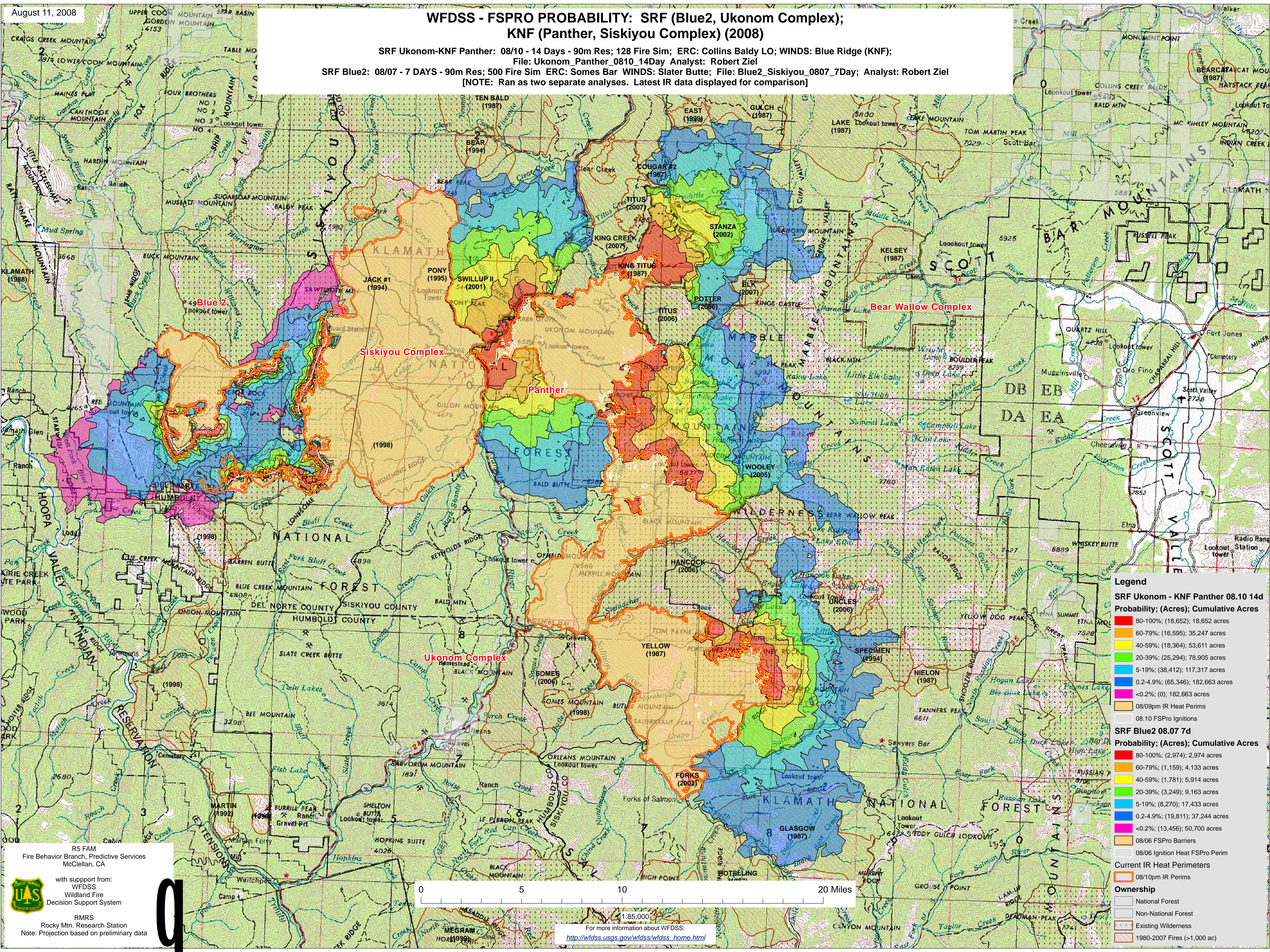


WFDSS - FSPRO PROBABILITY: SRF (Blue2, Ukonom Complex); KNF (Panther, Siskiyou Complex) (2008)

SRF Ukonom-KNF Panther: 08/10 - 14 Days - 90m Res; 128 Fire Sim; ERC: Collins Baldy LO; WINDS: Blue Ridge (KNF);
File: Ukonom_Panther_0810_14Day Analyst: Robert Ziel
SRF Blue2: 08/07 - 7 DAYS - 90m Res; 500 Fire Sim ERC: Somes Bar WINDS: Slater Butte; File: Blue2_Siskiyou_0807_7Day; Analyst: Robert Ziel
[NOTE: Ran as two separate analyses. Latest IR data displayed for comparison]



Legend

SRF Ukonom - KNF Panther 08.10 14d
Probability; (Acres); Cumulative Acres

- 80-100%; (18,652); 18,652 acres
- 60-79%; (16,595); 35,247 acres
- 40-59%; (18,364); 53,611 acres
- 20-39%; (25,294); 78,905 acres
- 5-19%; (38,412); 117,317 acres
- 0.2-4.9%; (65,346); 182,663 acres
- <0.2%; (0); 182,663 acres
- 08/09pm IR Heat Perims
- 08.10 FSPRO Ignitions

SRF Blue2 08.07 7d
Probability; (Acres); Cumulative Acres

- 80-100%; (2,974); 2,974 acres
- 60-79%; (1,159); 4,133 acres
- 40-59%; (1,781); 5,914 acres
- 20-39%; (3,249); 9,163 acres
- 5-19%; (8,270); 17,433 acres
- 0.2-4.9%; (19,811); 37,244 acres
- <0.2%; (13,456); 50,700 acres
- 08/06 FSPRO Barriers
- 08/06 Ignition Heat FSPRO Perim
- Current IR Heat Perimeters
- 08/10pm IR Perims

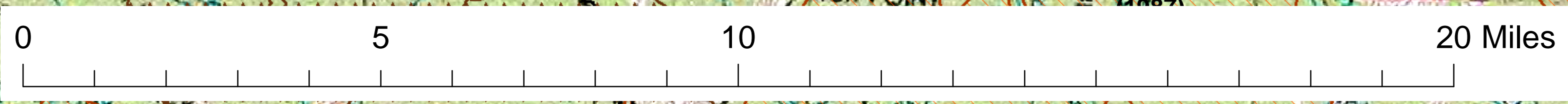
Ownership

- National Forest
- Non-National Forest
- Existing Wilderness
- 1980-2007 Fires (>1,000 ac)

R5 FAM
Fire Behavior Branch, Predictive Services
McClellan, CA

with support from:
WFDSS
Wildland Fire
Decision Support System

RMRS
Rocky Mtn. Research Station
Note: Projection based on preliminary data



1:85,000
For more information about WFDSS:
http://wfdss.usgs.gov/wfdss/wfdss_home.html