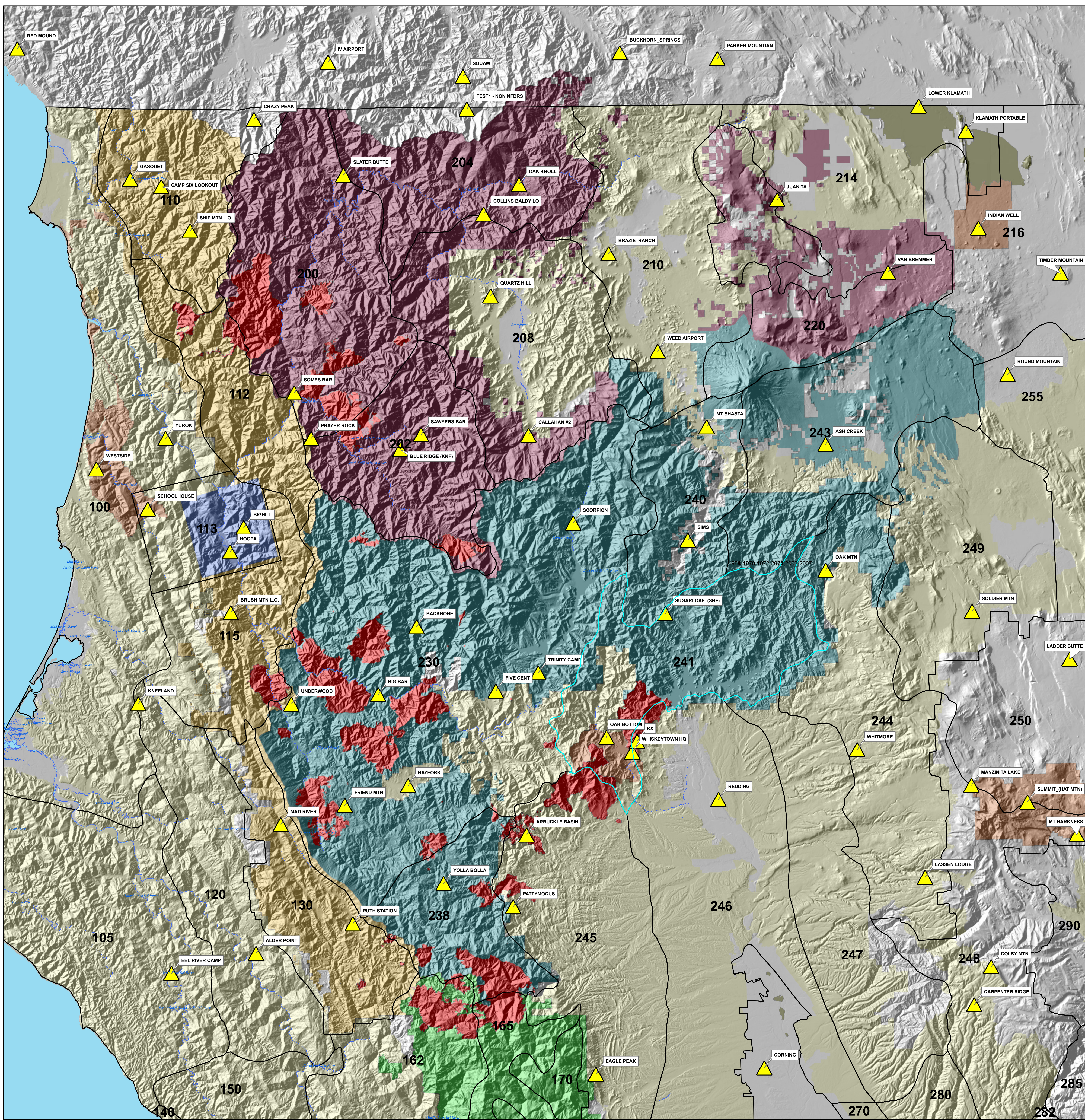


NW California National Fire Danger Rating Weather Stations & NW CA Area Command Fires



STATION_NO	ID	ELEV	LAT	LONG	Precip	Data_Years	Comments
ALDER POINT	40423	923	40.186	-123.590	51	2000-2007	
ARBUCKLE BASIN	40632	2300	40.442	-122.832	34	1994-2007	
ASH CREEK	40244	3700	41.276	-121.979	49	1997-2007	
BACKBONE	40518	4653	40.889	-123.142	40	2000-2007	
BIG BAR	40501	1500	40.743	-123.250	36	1961-1970,1972-2007	
BIGHILL	40402	3577	41.100	-123.333	59	1960-1963,1964-1965,1967,1986-2007	
BLUE RIDGE (KNF)	40203	5880	41.269	-123.189	35	1961-1979,1999-2007	
BRAZIE RANCH	40242	3000	41.689	-122.594	18	1997-2007	
BRUSH MTN L.O.	40404	3988	40.917	-123.668	74	1958-1970,1972-2007	
BUCKHORN SPRINGS	353230	2900	42.120	-122.559	20	1998-2007	
CALLAHAN #2	40265	3911	41.300	-122.824	21	2000-2007	
CAMP SIX LOOKOUT	40101	3778	41.930	-123.977	88	1961-1970,1972-1974,2003-2007	
CARPENTER RIDGE	41213	4812	40.069	-121.582	56	2000-2007	
COLBY MTN	40801	6004	40.150	-121.533	72	1961-1970,1972-2007	
COLLINS BALDY LO	40237	5493	41.775	-122.952	35	1973-2007	
CORNING	40814	294	39.939	-122.170	20	1998-2007	
CRAZY PEAK	40106	3970	41.976	-123.912	60	1985-2007	
EAGLE PEAK	40802	3713	39.928	-122.640	35	1961-1970,1972-2007	
EEL RIVER CAMP	40421	470	40.142	-123.826	50	1974-2007	
FIVE CENT	40520	2613	40.751	-122.918	35	2004-2007	
FRIEND MTN	40512	4396	40.505	-123.343	45	1990-2007	
GASQUET	40102	390	41.845	-123.966	93	1958-1970,1972-2007	
HAYFORK	40503	2340	40.548	-122.165	31	1961-1970,1972-2007	
HOOPA	40408	365	41.048	-123.671	56	1959-1967,1980-1984,1986-2007	
INDIAN WELL	40233	4770	41.735	-121.534	15	1976-2007	
IV AIRPORT	353115	1389	42.100	-123.400	40	1981-2007	
JUANITA	40240	5400	41.802	-122.110	12	1989-2007	
KLAMATH PORTABLE	40916	4040	41.944	-121.665	11		
KNEELAND	40429	2737	40.720	-123.927	45		
LADDER BUTTE	40723	5644	40.807	-121.297	18	1988-2007	
LASSEN LODGE	40815	4159	40.344	-121.714	40	1998-2007	
LOWER KLAMATH	40310	4100	41.999	-121.700	11	2001-2007	
MAD RIVER	40507	2775	40.463	-123.523	63	1958-1970,1972-2007	
MANZINITA LAKE	40609	5871	40.540	-121.580	42	1962-1970,1972-2007	
MT HARKNESS	40908	8045	40.430	-121.286	30	1991-2003	
MT SHASTA	40217	3591	41.316	-122.317	37	1961-1970,1973-2007	
OAK BOTTOM	40636	1326	40.651	-122.606	64	2001-2007	
OAK KNOLL	40218	1941	41.838	-122.850	24	1961-1970,1972-2007	
OAK MTN	40635	2670	41.006	-121.983	75	1998-2007	
PARKER MOUNTAIN	353344	5250	42.106	-122.278	24	1972,1987,1993	
PATTYMOCUS	40812	3889	40.288	-122.870	45	1990-2007	
PRAYER ROCK	49917	5450	41.292	-123.443	62		
QUARTZ HILL	40239	4229	41.599	-122.932	35	1982,1991,1997,2003-2007	
RED MOUND	352920	1753	42.122	-124.296	95	1994-2007	
REDDING	40611	500	40.516	-122.292	33	1970-2007	
ROUND MOUNTAIN	40221	5258	41.420	-121.458	15	1961-1969,1972-2007	
RUTH STATION	40508	2732	40.251	-123.319	63	1962-1970,1972-2007	
RX	40699	2324	40.642	-122.520	60		
SAWYERS BAR	40222	2617	41.301	-123.130	45	1961-2007	
SCHOOLHOUSE	40425	2640	41.138	-123.906	42	2001-2007	
SCORPION	40517	3820	41.111	-122.898	47	1997-2007	
SHIP MTN L.O.	40105	5300	41.736	-123.793	88	1975-2003,2005-2007	
SIMS	40618	2580	41.073	-122.373	57	1972-2007	
SLATER BUTTE	40225	4670	41.858	-123.354	70	1961-1977,1984-2007	
SOLDIER MTN	40630	3760	40.913	-121.570	16	1993-2007	
SOMES BAR	40231	920	41.390	-123.492	60	1965-1971,1973-2007	
SQUAW	353213	4964	42.070	-123.011	28	1973-1974,1976-1979,1983-2007	
SUGARLOAF (SHF)	40614	3214	40.916	-122.438	70	1999-2007	
SUMMIT (HAT MTN)	40633	6850	40.502	-121.423	0	1995-1997	
TEST1 - NON NFDRS	49910	1000	42.000	-123.000	30		
TIMBER MOUNTAIN	40306	5140	41.635	-121.301	13	1961-1968,1972-2007	
TRINITY CAMP	40516	3350	40.790	-122.798	36	1995-2007	
UNDERWOOD	40519	2560	40.722	-123.495	56	2002-2007	
VAN BREMMER	40243	5310	41.643	-121.795	30	1993-2007	
WEED AIRPORT	40228	2930	41.479	-122.455	34	1993,1997-2007	
WESTSIDE	40428	1291	41.223	-124.053	42	2005-2007	
WHISKEYTOWN HQ	40628	1311	40.919	-122.534	64	1973-2007	
WHITMORE	40615	2450	40.620	-121.900	36	1993-2007	
YOLLA BOLLA	40511	4786	40.338	-123.065	50	1990-1992,1994-2007	
YUROK	40427	495	41.290	-123.857	75	2005-2007	

Legend

- NFDRS Station
- NFDRS Areas
- NW CA June Lightning Fires
- Klamath
- Mendocino
- Shasta-Trinity
- Six Rivers
- BIA
- BLM
- CALFIRE
- NPS
- UFW

Predictive Service Area

NFDRS_NAME	PSA_NAME
244	Northern Sierras
250	Northern Sierras
248	Northern Sierras
290	Northern Sierras
285	Northern Sierras
210	NE California
214	NE California
216	NE California
220	NE California
255	NE California
249	NE California
105	North Coast
100	North Coast
162	Central Coast
150	Central Coast
110	Northwestern Mtn
200	Northwestern Mtn
204	Northwestern Mtn
208	Northwestern Mtn
243	Northwestern Mtn
202	Northwestern Mtn
240	Northwestern Mtn
230	Northwestern Mtn
241	Northwestern Mtn
120	Northwestern Mtn
130	Northwestern Mtn
238	Northwestern Mtn
165	Northwestern Mtn
112	Northwestern Mtn
113	Northwestern Mtn
115	Northwestern Mtn
246	Sac Valley/Foothills
247	Sac Valley/Foothills
245	Sac Valley/Foothills
170	Sac Valley/Foothills
280	Sac Valley/Foothills

