

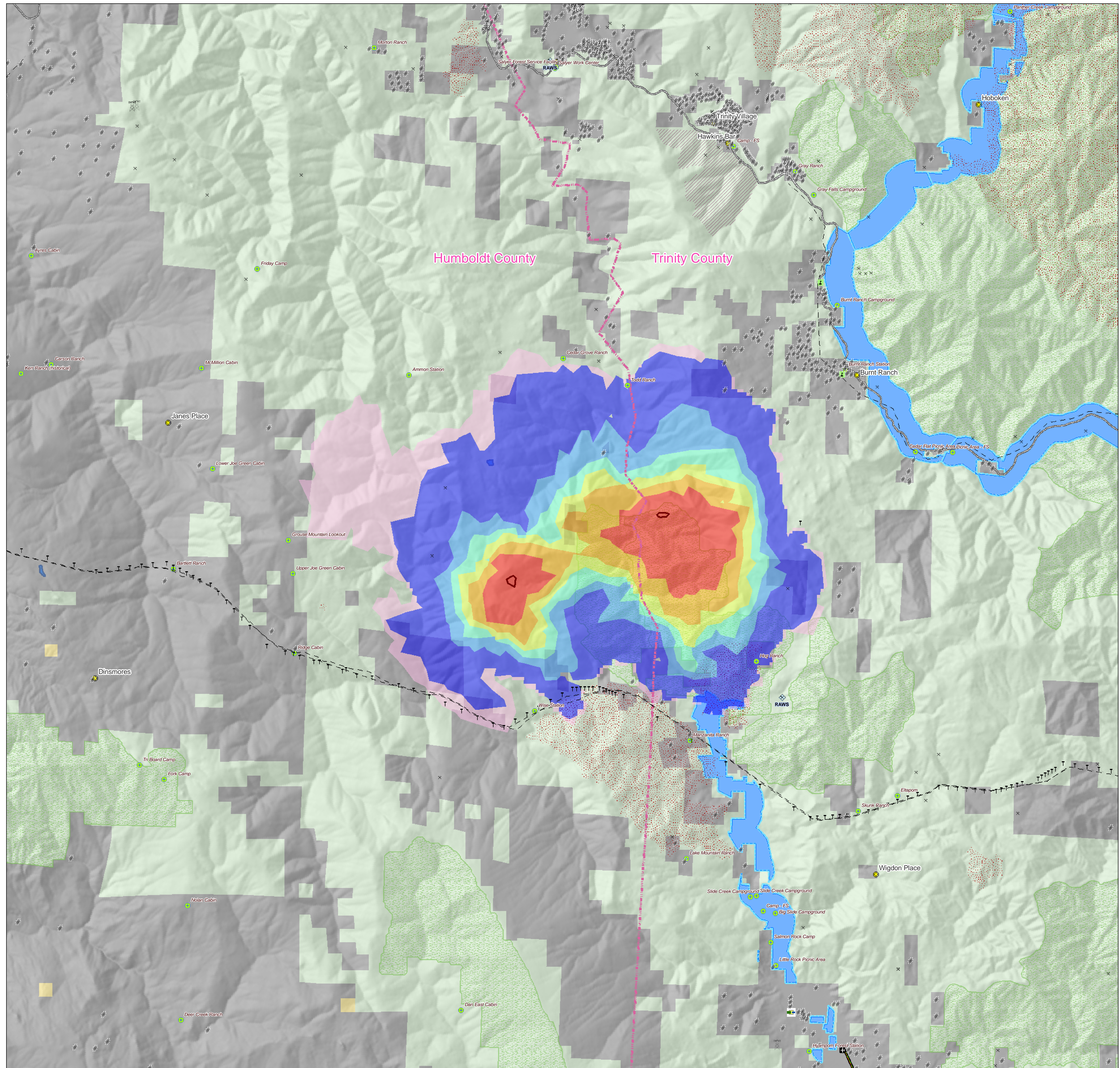


Sims-Half, CA

28 June 2008 T1_A_080628_jk

Major Values-at-Risk per
FSPRO Fire Spread Probabilities:
10 days as of 21 June 2008

- FSPRO Fire Perimeter 21 June PM
- Past Fires 1994-2007
- FSPRO Fire Spread Probabilities**
- > 80 %
- 60 - 80 %
- 40 - 60 %
- 20 - 40 %
- 5 - 20 %
- 1 - 5 %
- < 1 %
- # Building Clusters
- Z RAWS Stations
- Powerlines
- * Power Pylon
- ⚡ Power or Pumping Substation
- X Communication Towers
- ✈ Airports
- Airport Runways
- n Schools
- ⚠ HAZMAT: Mines
- 📍 Other Landmarks
- Major Roads
- County Boundary
- Jurisdiction**
- Private
- BLM
- USFS
- Inventoried Roadless
- Primitive RNA
- Wild-Scenic-Rec Rivers



*Building Clusters represent the center of parcels where county assessor records indicate taxable improvements are present. One or more structures and other improvements may exist proximate to these point locations.

CAUTION: Defer to air photos or local knowledge for exact structure and other feature locations.

**Recreation residences and special use structures data are not supplied by USFS and are not identified or analyzed in this report.