



Yuba River Complex, CA

T1_A_080623_kh 23 June 2008

Major Values-at-Risk per
FSPRO Fire Spread Probabilities:
7 days as of 23 June 2008

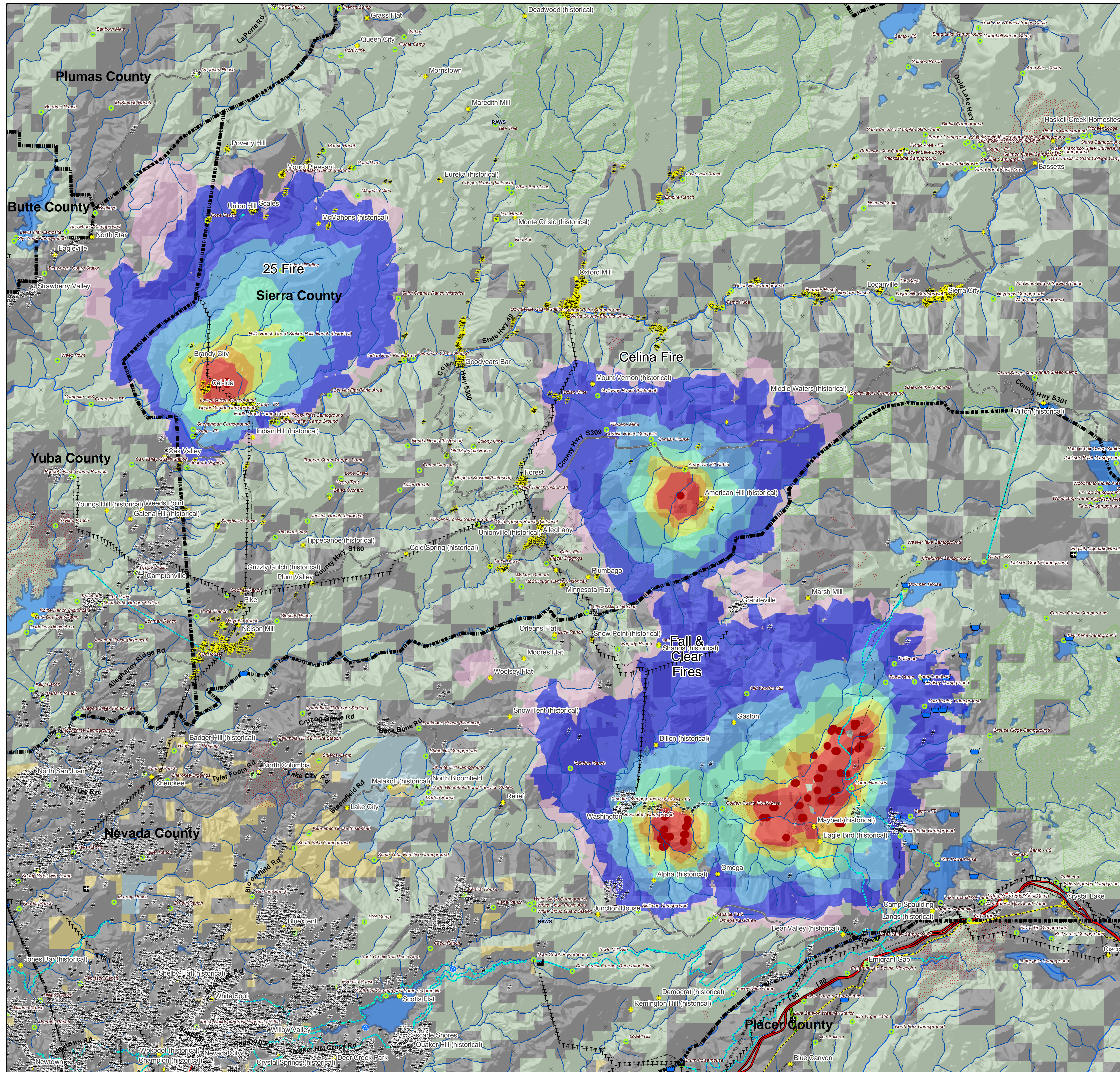
- FSPRO Fire Perimeter 080623
- ! MODIS Points 7 days: 23 June
- Past Fires 1994-2007
- FSPRO Fire Spread Probabilities**
- > 80 %
- 60 - 80 %
- 40 - 60 %
- 20 - 40 %
- 5 - 20 %
- 1 - 5 %
- < 1 %
- # Building Clusters *
- # Structure Points - USGS**
- Z RAWs Stations
- D Water: Dams > 100af
- I Water Supply: Intakes
- W Water Treatment Plants
- Water Pipeline - Aqueduct - Canal
- Powerlines
- D Industrial Plant
- * Power Pylon
- + Power or Pumping Substation
- X Communication Towers
- Oil & Gas Transmission Lines
- ✈ Airports
- Airport Runways
- V Hospitals
- h Schools
- C HAZMAT: Mines
- W HAZMAT: Superfund Sites
- W HAZMAT: Hazardous Waste
- * Other Landmarks
- Interstates
- Major Roads
- Railways
- County Boundary
- Jurisdiction**
- Private
- State
- BLM
- USFS
- Inventoried Roadless
- Experimental RNA
- Wild-Scenic-Rec Rivers
- National Monuments

*Building Clusters represent the center of parcels where county assessor records indicate taxable improvements are present. One or more structures and other improvements may exist proximate to these point locations.

CAUTION: Defer to air photos or local knowledge for exact structure and other feature locations.

** Structure points are derived by the USGS through supervised analysis of high resolution aerial photography. Structures within dense canopy may not be mapped.

Recreation residences and special use structures data are not supplied by USFS and are not identified or analyzed in this report.



1:60,000

0

4

8

16 Miles