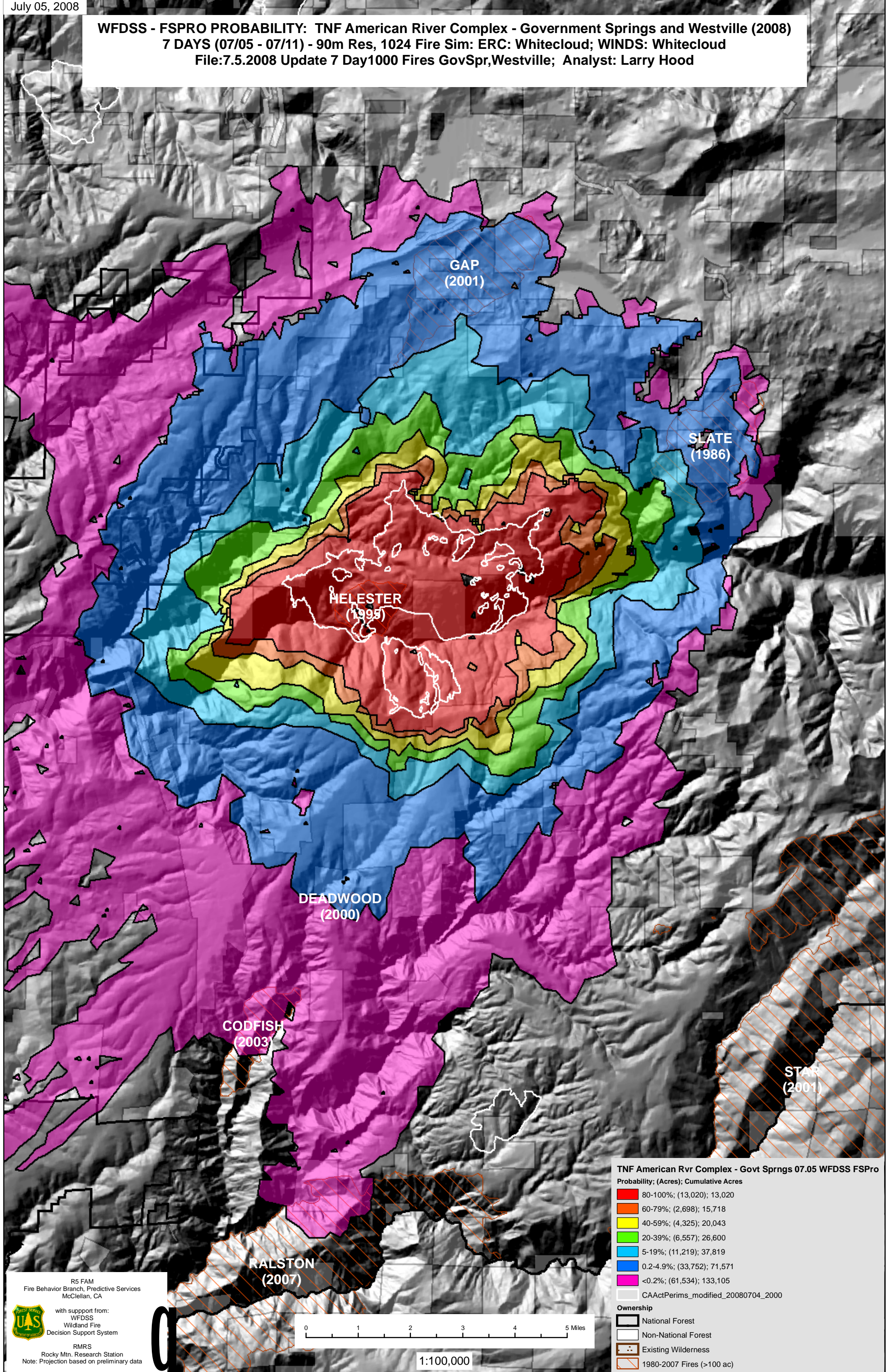


WFDSS - FSPRO PROBABILITY: TNF American River Complex - Government Springs and Westville (2008)
7 DAYS (07/05 - 07/11) - 90m Res, 1024 Fire Sim: ERC: Whitecloud; WINDS: Whitecloud
File:7.5.2008 Update 7 Day1000 Fires GovSpr,Westville; Analyst: Larry Hood



TNF American Rvr Complex - Govt Sprngs 07.05 WFDSS FSPro
Probability; (Acres); Cumulative Acres

80-100%	(13,020); 13,020
60-79%	(2,698); 15,718
40-59%	(4,325); 20,043
20-39%	(6,557); 26,600
5-19%	(11,219); 37,819
0.2-4.9%	(33,752); 71,571
<0.2%	(61,534); 133,105
CAActPerims_modified_20080704_2000	

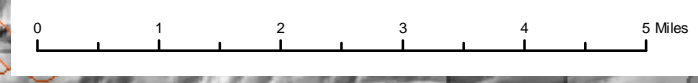
Ownership

- National Forest
- Non-National Forest
- Existing Wilderness
- 1980-2007 Fires (>100 ac)

R5 FAM
Fire Behavior Branch, Predictive Services
McClellan, CA

with support from:
WFDSS
Wildland Fire
Decision Support System

RMRS
Rocky Mtn. Research Station
Note: Projection based on preliminary data



1:100,000