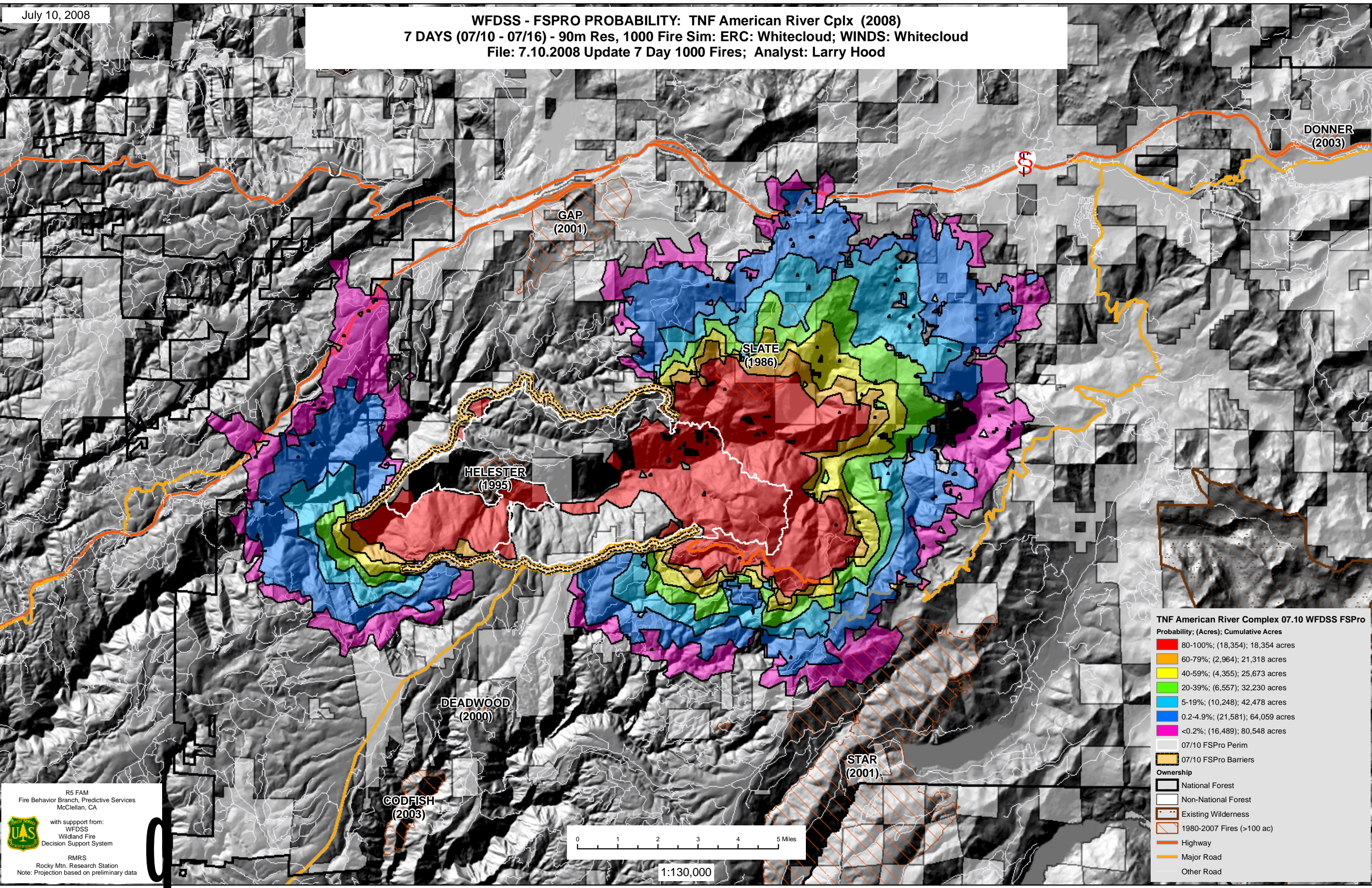


July 10, 2008

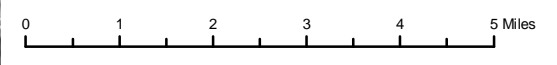
WFDSS - FSPRO PROBABILITY: TNF American River Cplx (2008)
7 DAYS (07/10 - 07/16) - 90m Res, 1000 Fire Sim: ERC: Whitecloud; WINDS: Whitecloud
File: 7.10.2008 Update 7 Day 1000 Fires; Analyst: Larry Hood



TNF American River Complex 07.10 WFDSS FSPRO

Probability	(Acres)	Cumulative Acres
80-100%	(18,354)	18,354 acres
60-79%	(2,964)	21,318 acres
40-59%	(4,355)	25,673 acres
20-39%	(6,557)	32,230 acres
5-19%	(10,248)	42,478 acres
0.2-4.9%	(21,581)	64,059 acres
<0.2%	(16,489)	80,548 acres

Symbol	Description
[Red outline]	07/10 FSPro Perim
[Yellow dashed line]	07/10 FSPro Barriers
Ownership	
[Black outline]	National Forest
[White outline]	Non-National Forest
[Dotted pattern]	Existing Wilderness
[Diagonal hatching]	1980-2007 Fires (>100 ac)
[Orange line]	Highway
[Yellow line]	Major Road
[Grey line]	Other Road



1:130,000

R5 FAM
Fire Behavior Branch, Predictive Services
McClellan, CA

with support from:
WFDSS
Wildland Fire
Decision Support System

RMRS
Rocky Mtn. Research Station
Note: Projection based on preliminary data

