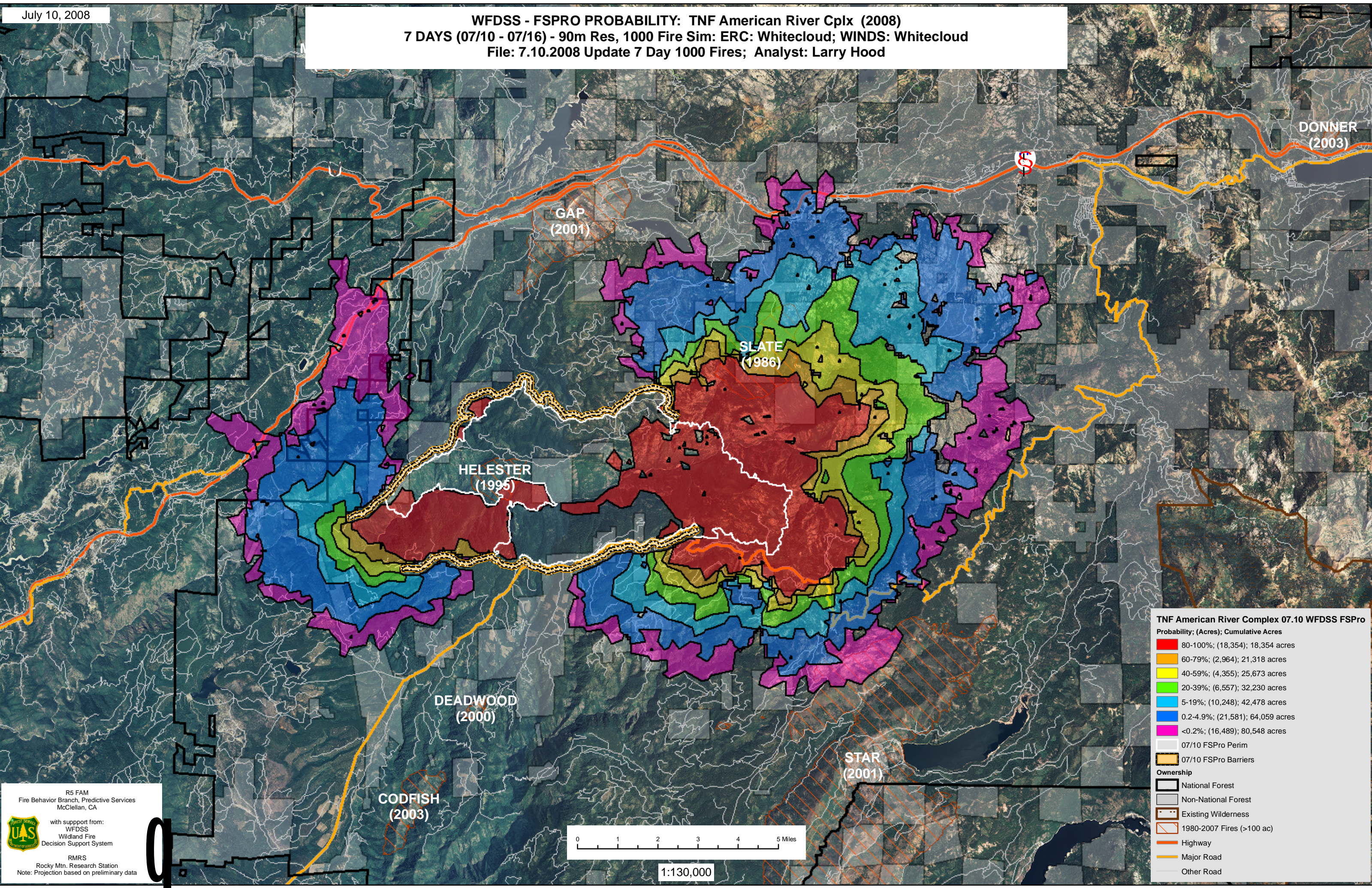


July 10, 2008

WFDSS - FSPRO PROBABILITY: TNF American River Cplx (2008)
7 DAYS (07/10 - 07/16) - 90m Res, 1000 Fire Sim: ERC: Whitecloud; WINDS: Whitecloud
File: 7.10.2008 Update 7 Day 1000 Fires; Analyst: Larry Hood



TNF American River Complex 07.10 WFDSS FSPRO

Probability; (Acres); Cumulative Acres

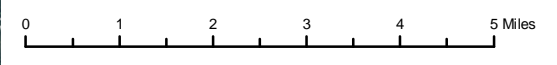
- 80-100%; (18,354); 18,354 acres
- 60-79%; (2,964); 21,318 acres
- 40-59%; (4,355); 25,673 acres
- 20-39%; (6,557); 32,230 acres
- 5-19%; (10,248); 42,478 acres
- 0.2-4.9%; (21,581); 64,059 acres
- <0.2%; (16,489); 80,548 acres

07/10 FSPro Perim

07/10 FSPro Barriers

Ownership

- National Forest
- Non-National Forest
- Existing Wilderness
- 1980-2007 Fires (>100 ac)
- Highway
- Major Road
- Other Road



1:130,000

R5 FAM
Fire Behavior Branch, Predictive Services
McClellan, CA

with support from:
WFDSS
Wildland Fire
Decision Support System

RMRS
Rocky Mtn. Research Station
Note: Projection based on preliminary data

