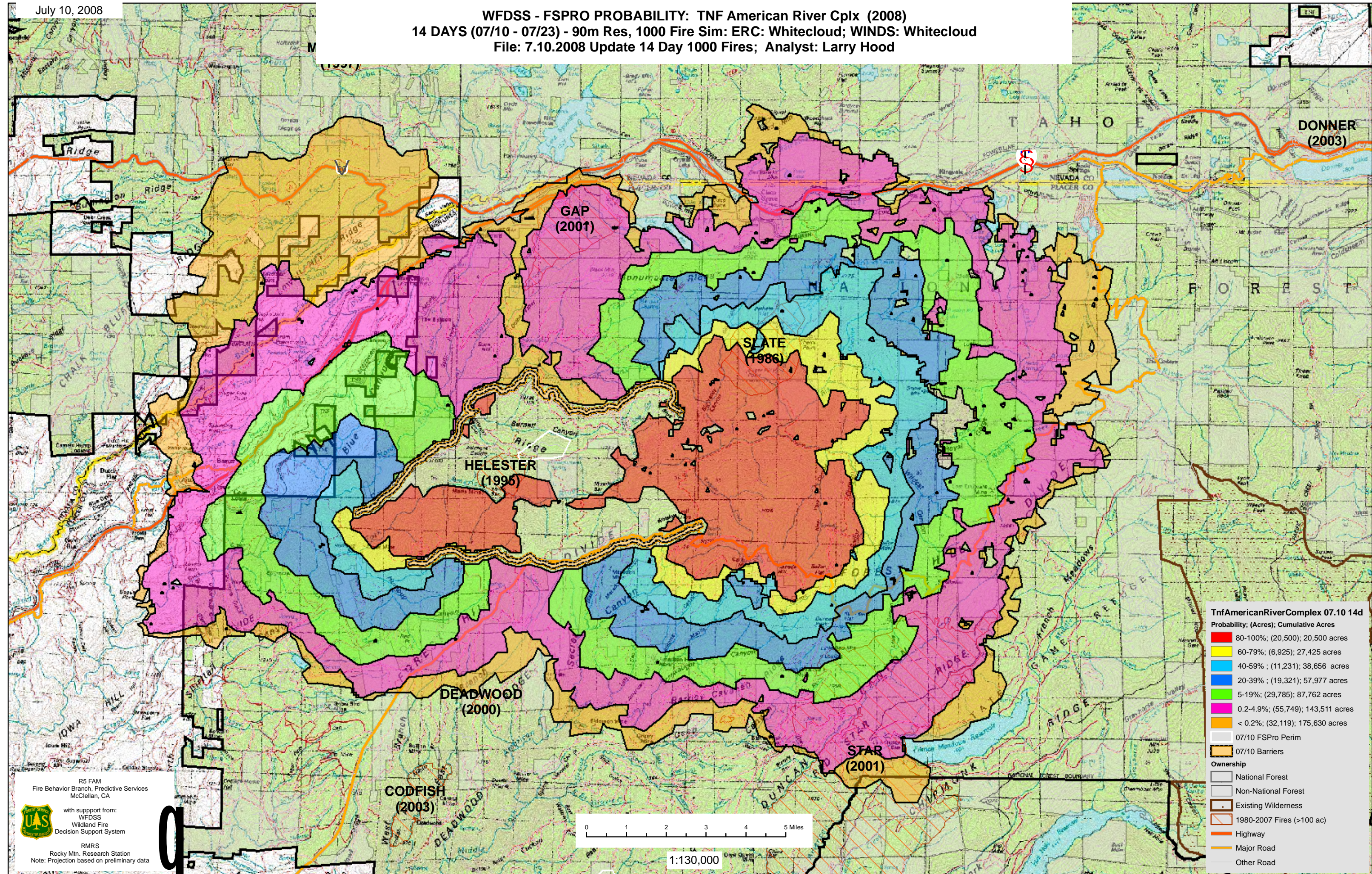


WFDSS - FSPRO PROBABILITY: TNF American River Cplx (2008)
14 DAYS (07/10 - 07/23) - 90m Res, 1000 Fire Sim: ERC: Whitecloud; WINDS: Whitecloud
File: 7.10.2008 Update 14 Day 1000 Fires; Analyst: Larry Hood



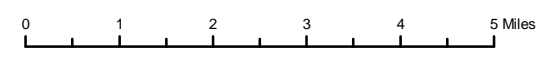
TnfAmericanRiverComplex 07.10 14d
Probability: (Acres); Cumulative Acres

- 80-100%: (20,500); 20,500 acres
- 60-79%: (6,925); 27,425 acres
- 40-59%: (11,231); 38,656 acres
- 20-39%: (19,321); 57,977 acres
- 5-19%: (29,785); 87,762 acres
- 0.2-4.9%: (55,749); 143,511 acres
- < 0.2%: (32,119); 175,630 acres

07/10 FSPro Perim
07/10 Barriers

Ownership

- National Forest
- Non-National Forest
- Existing Wilderness
- 1980-2007 Fires (>100 ac)
- Highway
- Major Road
- Other Road



1:130,000

R5 FAM
Fire Behavior Branch, Predictive Services
McClellan, CA

with support from:
WFDSS
Wildland Fire
Decision Support System

RMRS
Rocky Mtn. Research Station
Note: Projection based on preliminary data