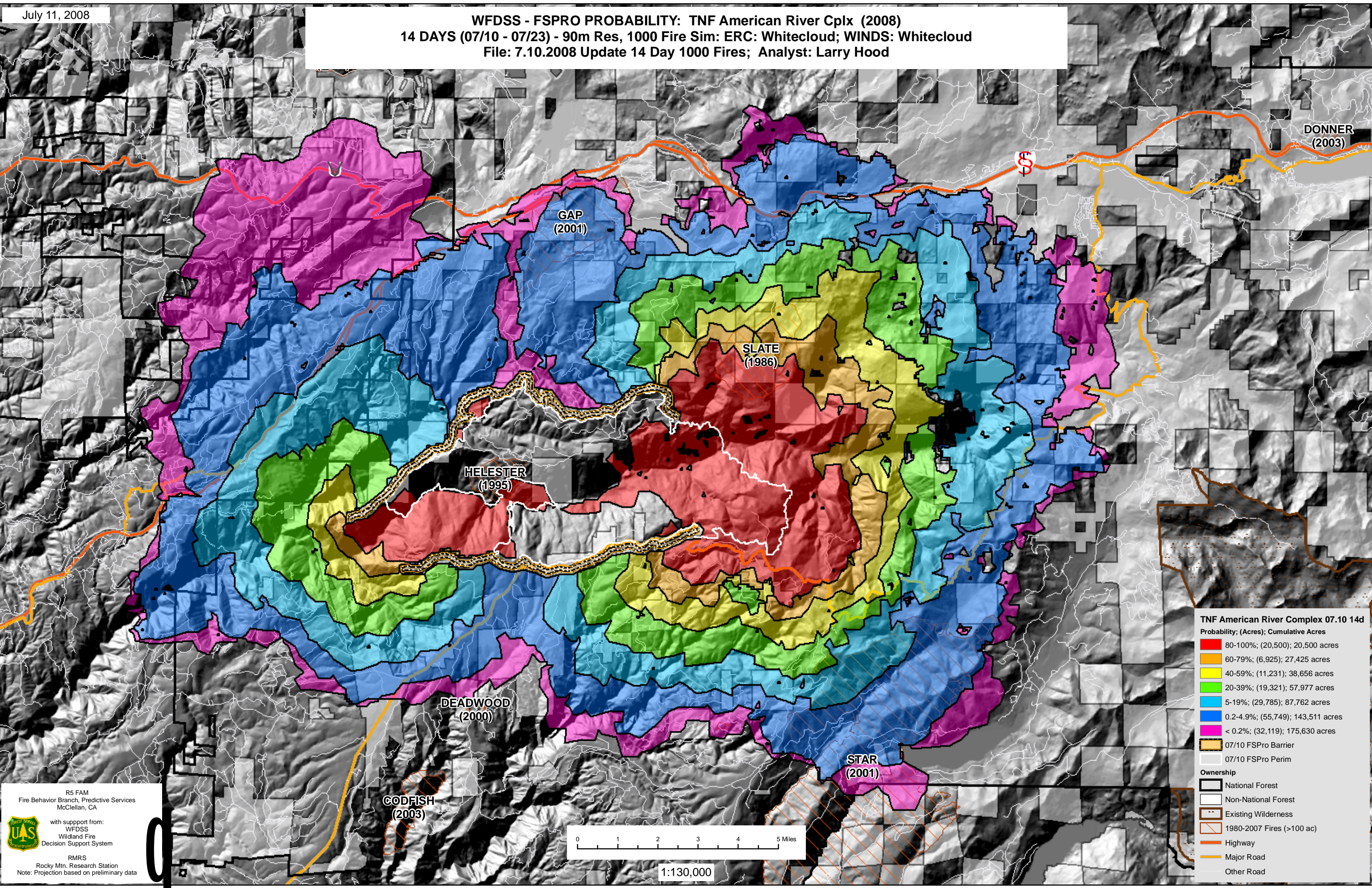


WFDSS - FSPRO PROBABILITY: TNF American River Cplx (2008)
14 DAYS (07/10 - 07/23) - 90m Res, 1000 Fire Sim: ERC: Whitecloud; WINDS: Whitecloud
File: 7.10.2008 Update 14 Day 1000 Fires; Analyst: Larry Hood



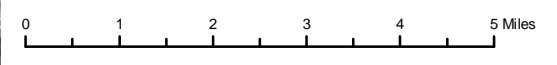
TNF American River Complex 07.10.14d
Probability; (Acres); Cumulative Acres

80-100%	(20,500); 20,500 acres
60-79%	(6,925); 27,425 acres
40-59%	(11,231); 38,656 acres
20-39%	(19,321); 57,977 acres
5-19%	(29,785); 87,762 acres
0.2-4.9%	(55,749); 143,511 acres
< 0.2%	(32,119); 175,630 acres

07/10 FSPro Barrier
07/10 FSPro Perim

Ownership

- National Forest
- Non-National Forest
- Existing Wilderness
- 1980-2007 Fires (>100 ac)
- Highway
- Major Road
- Other Road



1:130,000

R5 FAM
Fire Behavior Branch, Predictive Services
McClellan, CA

with support from:
WFDSS
Wildland Fire
Decision Support System

RMRS
Rocky Mtn. Research Station
Note: Projection based on preliminary data

