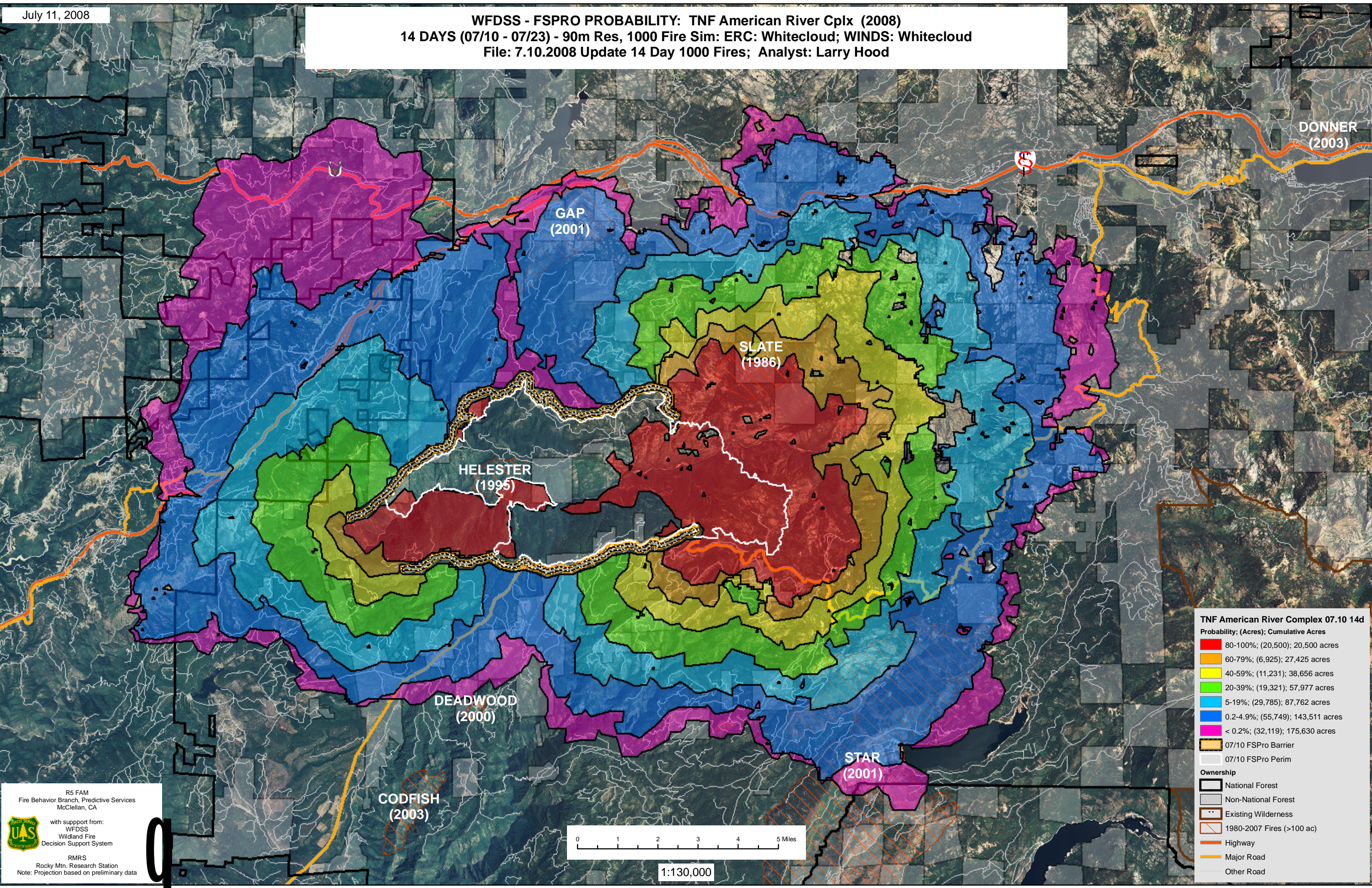


WFDSS - FSPRO PROBABILITY: TNF American River Cplx (2008)  
14 DAYS (07/10 - 07/23) - 90m Res, 1000 Fire Sim: ERC: Whitecloud; WINDS: Whitecloud  
File: 7.10.2008 Update 14 Day 1000 Fires; Analyst: Larry Hood



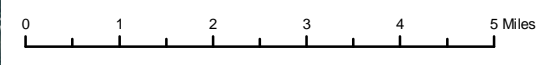
**TNF American River Complex 07.10 14d**  
Probability; (Acres); Cumulative Acres

- 80-100%; (20,500); 20,500 acres
- 60-79%; (6,925); 27,425 acres
- 40-59%; (11,231); 38,656 acres
- 20-39%; (19,321); 57,977 acres
- 5-19%; (29,785); 87,762 acres
- 0.2-4.9%; (55,749); 143,511 acres
- < 0.2%; (32,119); 175,630 acres

07/10 FSPro Barrier  
07/10 FSPro Perim

**Ownership**

- National Forest
- Non-National Forest
- Existing Wilderness
- 1980-2007 Fires (>100 ac)
- Highway
- Major Road
- Other Road




1:130,000

R5 FAM  
Fire Behavior Branch, Predictive Services  
McClellan, CA

with support from:  
WFDSS  
Wildland Fire  
Decision Support System

RMRS  
Rocky Mtn. Research Station  
Note: Projection based on preliminary data



DONNER (2003)

GAP (2001)

SLATE (1986)

HELESTER (1995)

DEADWOOD (2000)

STAR (2001)

CODFISH (2003)