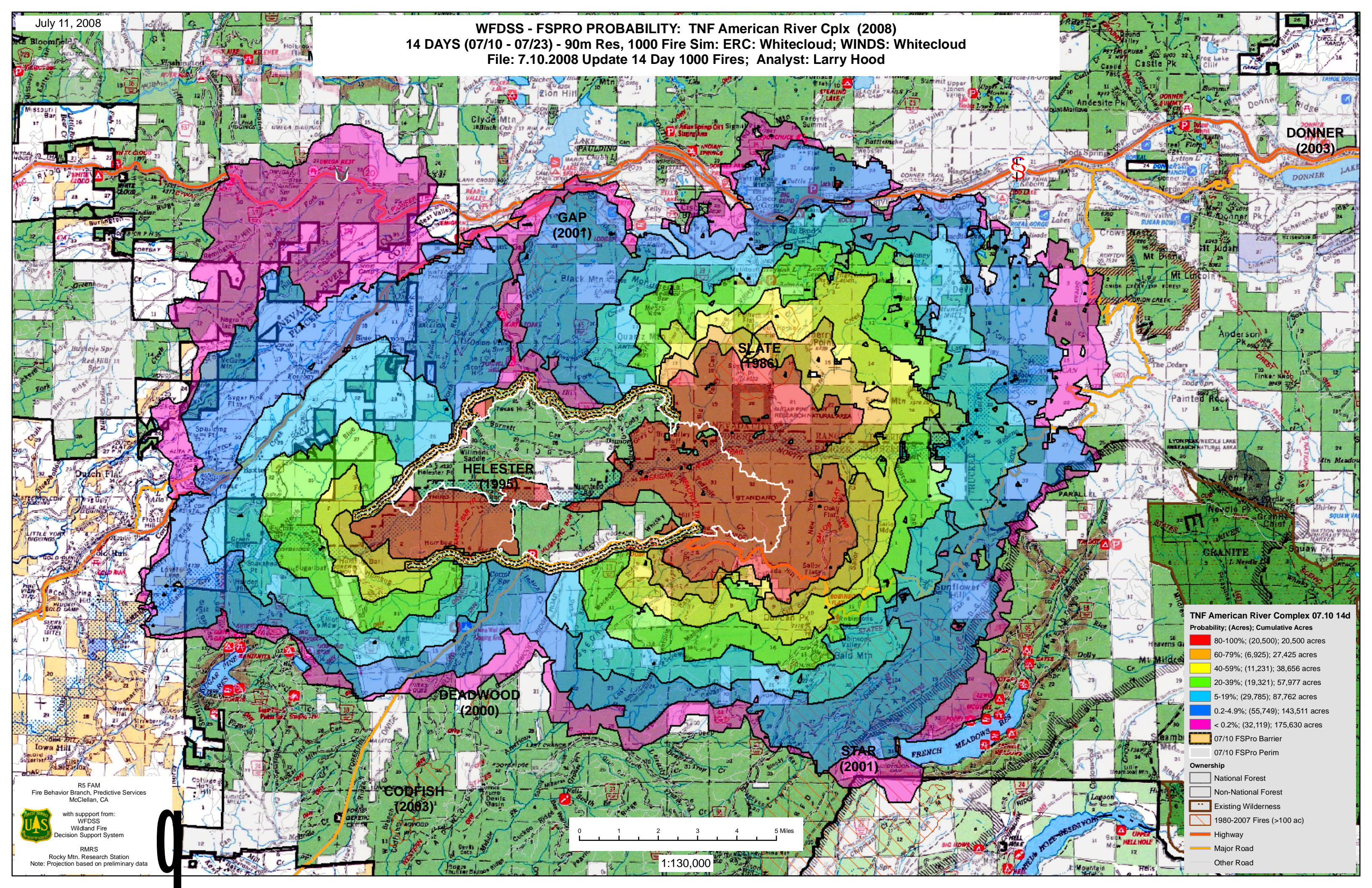


WFDSS - FSPRO PROBABILITY: TNF American River Cplx (2008)
14 DAYS (07/10 - 07/23) - 90m Res, 1000 Fire Sim: ERC: Whitecloud; WINDS: Whitecloud
File: 7.10.2008 Update 14 Day 1000 Fires; Analyst: Larry Hood



TNF American River Complex 07.10.14d
Probability; (Acres); Cumulative Acres

80-100%; (20,500); 20,500 acres
60-79%; (6,925); 27,425 acres
40-59%; (11,231); 38,656 acres
20-39%; (19,321); 57,977 acres
5-19%; (29,785); 87,762 acres
0.2-4.9%; (55,749); 143,511 acres
< 0.2%; (32,119); 175,630 acres

07/10 FSPro Barrier
07/10 FSPro Perim

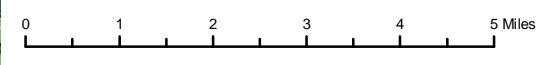
Ownership

- National Forest
- Non-National Forest
- Existing Wilderness
- 1980-2007 Fires (>100 ac)
- Highway
- Major Road
- Other Road

R5 FAM
Fire Behavior Branch, Predictive Services
McClellan, CA

with support from:
WFDSS
Wildland Fire
Decision Support System

RMRS
Rocky Mtn. Research Station
Note: Projection based on preliminary data



1:130,000