



American River Complex, CA

30 June 2008 T1_B_080630

Major Values-at-Risk per FSPRO Fire Spread Probabilities: 7 days as of 30 June 2008

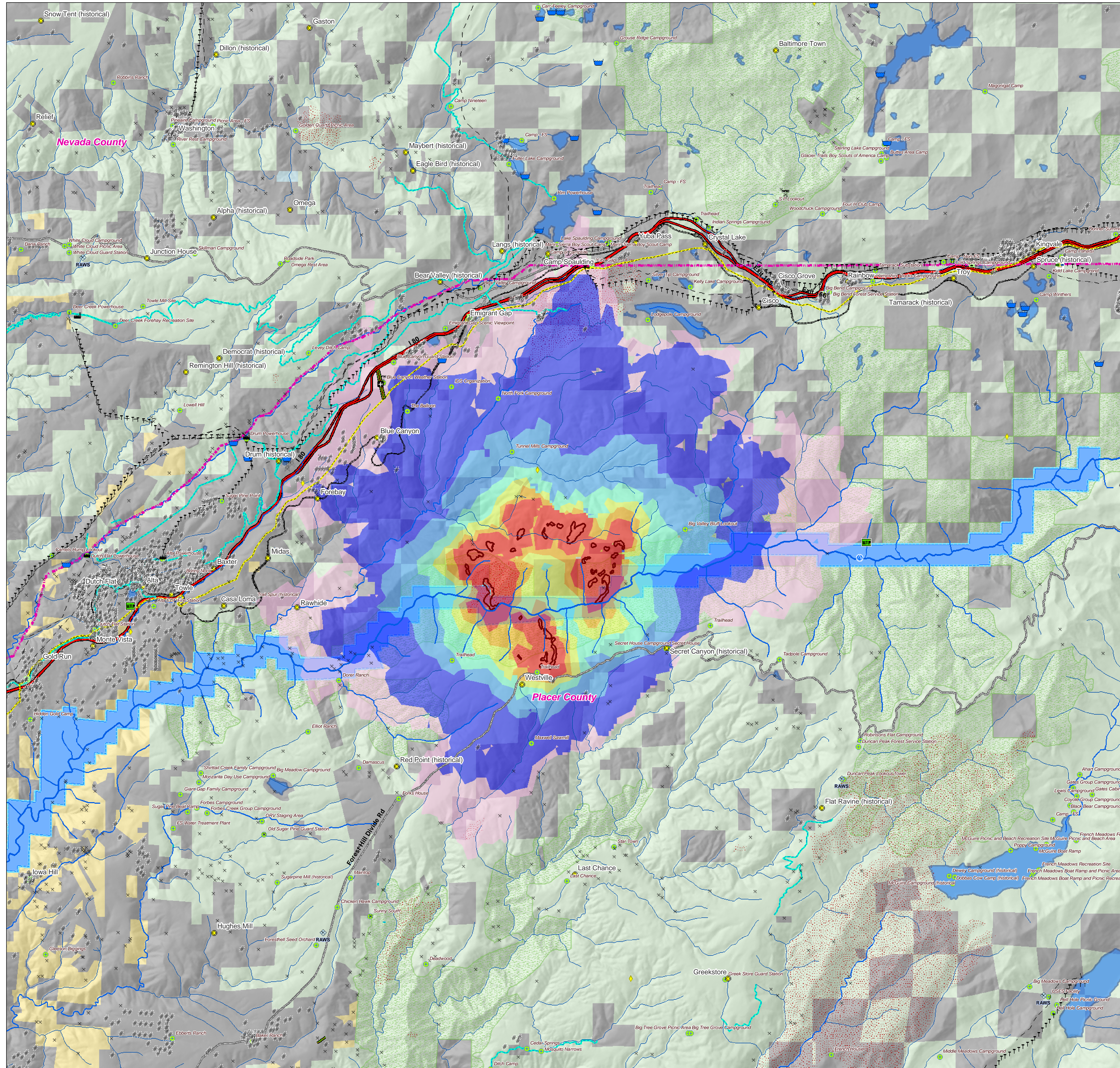
FSPro Fire Perimeter: 29 June AM

Past Fires 1994-2007

FSPro Fire Spread Probabilities

- > 80 %
- 60 - 80 %
- 40 - 60 %
- 20 - 40 %
- 5 - 20 %
- 1 - 5 %
- < 1 %

- # Building Clusters
- Z RAWs Stations
- Water: Dams > 100af
- Water Supply: Intakes
- Water Treatment Plants
- Water Pipeline - Aqueduct - Canal
- Powerlines
- D Industrial Plant
- * Power Pylon
- Power or Pumping Substation
- X Communication Towers
- Oil & Gas Transmission Lines
- Æ Airports
- Airport Runways
- h Schools
- HAZMAT: Mines
- W HAZMAT: Hazardous Waste
- Other Landmarks
- Interstates
- Major Roads
- Railways
- County Boundary
- Jurisdiction**
- Private
- State
- BLM
- USFS
- Inventoried Roadless
- Experimental RNA
- Wild-Scenic-Rec Rivers



*Building Clusters represent the center of parcels where county assessor records indicate taxable improvements are present. One or more structures and other improvements may exist proximate to these point locations.

CAUTION: Defer to air photos or local knowledge for exact structure and other feature locations.

**Recreation residences and special use structures data are not available from USFS and are not identified or analyzed in this report.

***Mines may pose a threat to fire fighter safety.