

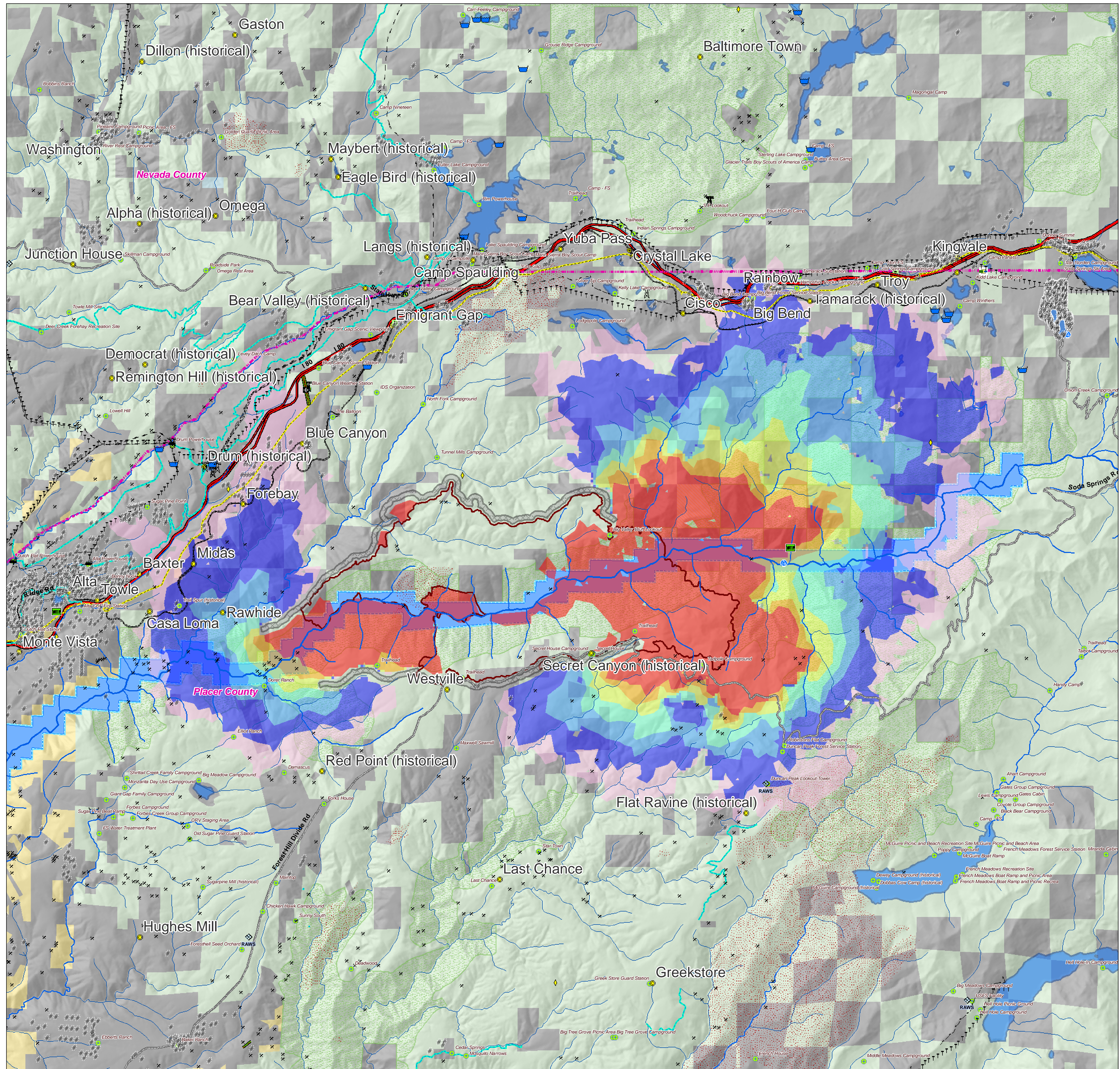


American River Complex, CA

10 July 2008 T1\_C\_080710\_eb

Major Values-at-Risk per FSPRO Fire Spread Probabilities: 7 days as of 30 June 2008

- Legend for FSPRO Fire Perimeter, Past Fires, Fire Spread Probabilities, Building Clusters, RAWs Stations, Water features, Powerlines, and Jurisdiction.



\*Building Clusters represent the center of parcels where county assessor records indicate taxable improvements are present.

\*\*Recreation residences and special use structures data are not available from USFS and are not identified or analyzed in this report.

\*\*\*Mines may pose a threat to fire fighter safety.

CAUTION: Defer to air photos or local knowledge for exact structure and other feature locations.