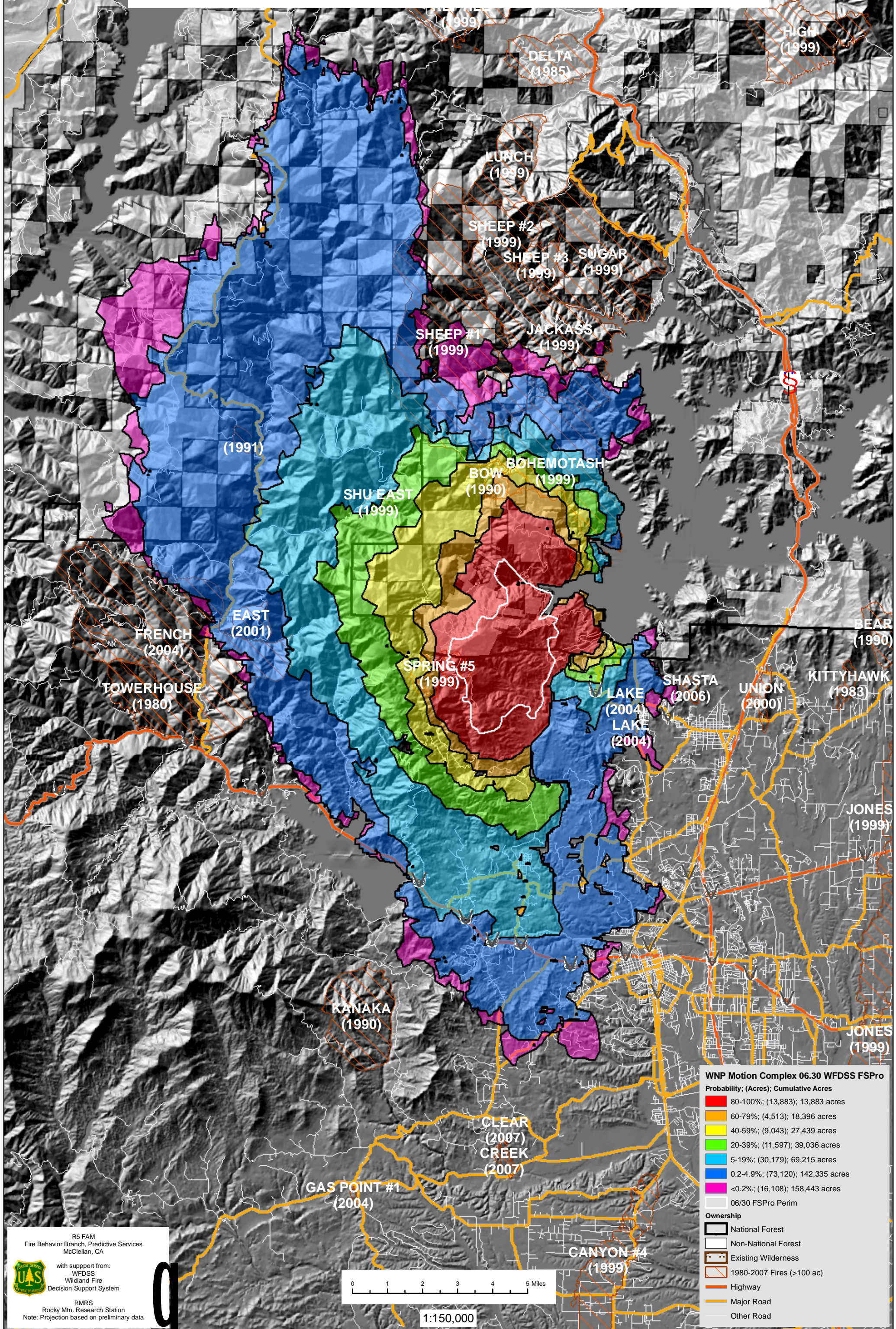


June 30, 2008

WFDSS - FSPRO PROBABILITY: WNP Motion Complex (2008)  
7 DAYS (06/30 - 07/06) - 90m Res, 500 Fire Sim: ERC: Arbuckle Basin; WINDS: Sugarloaf (SHF)  
File: Motion Complex 6\_30 Run1; Analyst: Caroline Noble



**WNP Motion Complex 06.30 WFDSS FSPRO**

Probability; (Acres); Cumulative Acres

|          |          |               |
|----------|----------|---------------|
| 80-100%  | (13,883) | 13,883 acres  |
| 60-79%   | (4,513)  | 18,396 acres  |
| 40-59%   | (9,043)  | 27,439 acres  |
| 20-39%   | (11,597) | 39,036 acres  |
| 5-19%    | (30,179) | 69,215 acres  |
| 0.2-4.9% | (73,120) | 142,335 acres |
| <0.2%    | (16,108) | 158,443 acres |

06/30 FSPRO Perim

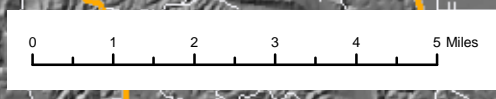
**Ownership**

- National Forest
- Non-National Forest
- Existing Wilderness
- 1980-2007 Fires (>100 ac)
- Highway
- Major Road
- Other Road

R5 FAM  
Fire Behavior Branch, Predictive Services  
McClellan, CA

with support from:  
WFDSS  
Wildland Fire  
Decision Support System

RMRS  
Rocky Mtn. Research Station  
Note: Projection based on preliminary data



1:150,000