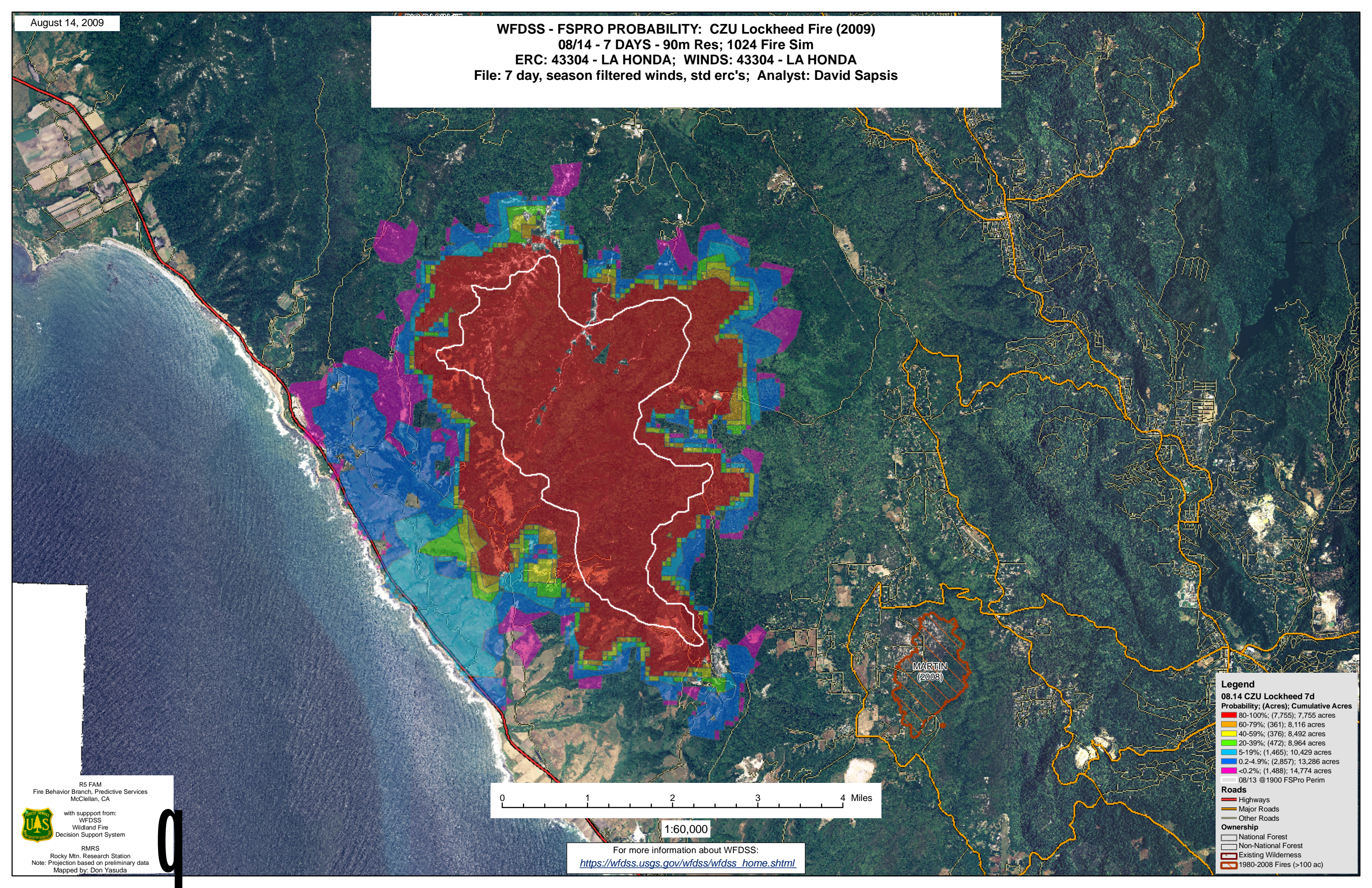


WFDSS - FSPRO PROBABILITY: CZU Lockheed Fire (2009)  
08/14 - 7 DAYS - 90m Res; 1024 Fire Sim  
ERC: 43304 - LA HONDA; WINDS: 43304 - LA HONDA  
File: 7 day, season filtered winds, std erc's; Analyst: David Sapsis



**Legend**

**08.14 CZU Lockheed 7d**  
Probability; (Acres); Cumulative Acres

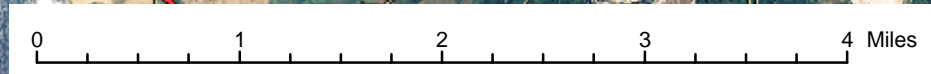
- 80-100%; (7,755); 7,755 acres
- 60-79%; (361); 8,116 acres
- 40-59%; (376); 8,492 acres
- 20-39%; (472); 8,964 acres
- 5-19%; (1,465); 10,429 acres
- 0.2-4.9%; (2,857); 13,286 acres
- <0.2%; (1,488); 14,774 acres
- 08/13 @ 1900 FSPRO Perim

**Roads**

- Highways
- Major Roads
- Other Roads

**Ownership**

- National Forest
- Non-National Forest
- Existing Wilderness
- 1980-2008 Fires (>100 ac)



1:60,000

For more information about WFDSS:  
[https://wfdss.usgs.gov/wfdss/wfdss\\_home.shtml](https://wfdss.usgs.gov/wfdss/wfdss_home.shtml)

R5 FAM  
Fire Behavior Branch, Predictive Services  
McClellan, CA

with support from:  
WFDSS  
Wildland Fire  
Decision Support System

RMRS  
Rocky Mtn. Research Station  
Note: Projection based on preliminary data  
Mapped by: Don Yasuda

