

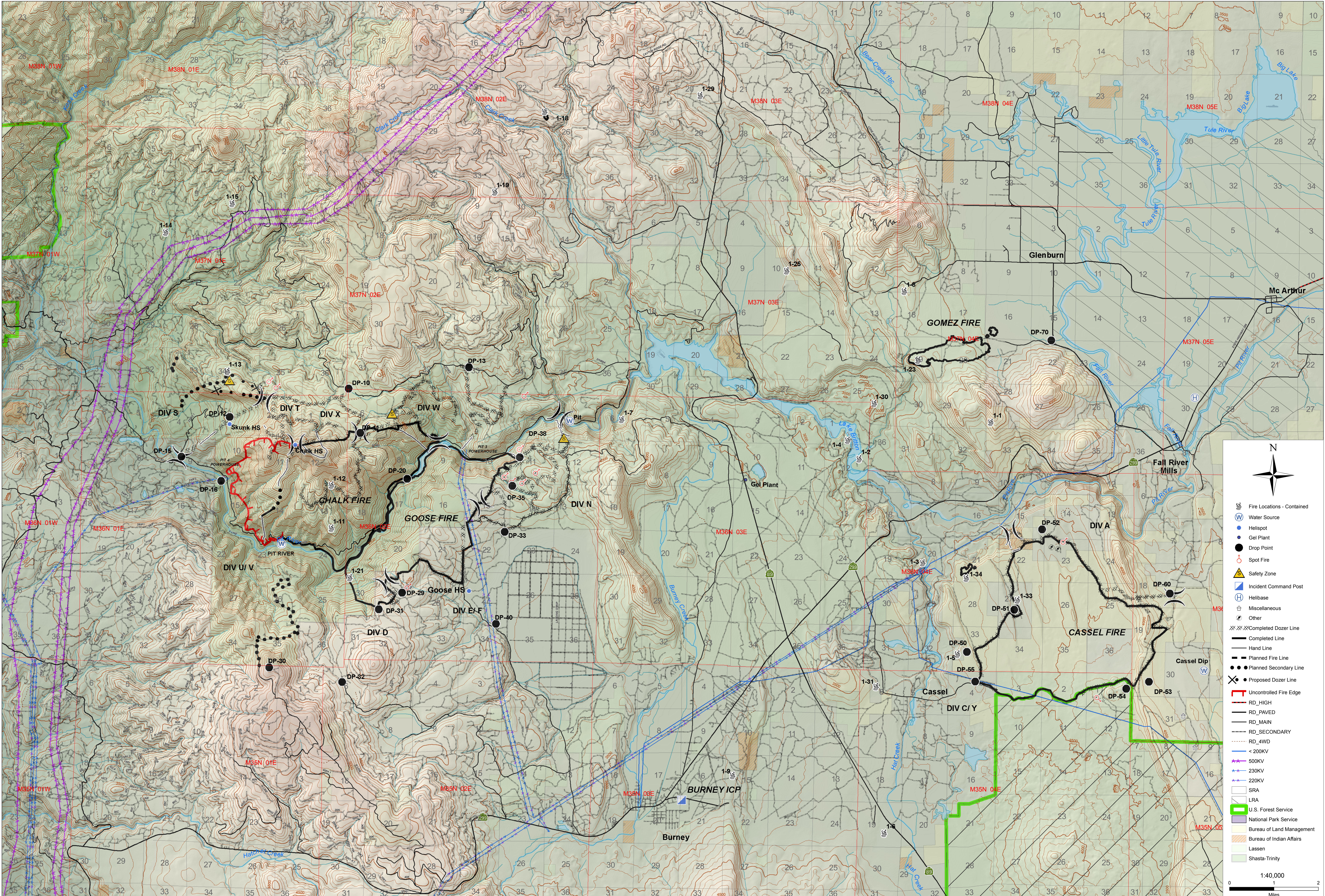


SHU LIGHTNING COMPLEX Burney LCA - Operations



CA SHU 005594

August 12, 2009



Legend

- Fire Locations - Contained
- Water Source
- Helispot
- Gel Plant
- Drop Point
- Spot Fire
- Safety Zone
- Incident Command Post
- Helibase
- Miscellaneous
- Other
- Completed Dozer Line
- Completed Line
- Hand Line
- Planned Fire Line
- Planned Secondary Line
- Proposed Dozer Line
- Uncontrolled Fire Edge
- RD_HIGH
- RD_PAVED
- RD_MAIN
- RD_SECONDARY
- RD_4WD
- < 200KV
- 500KV
- 230KV
- 220KV
- SRA
- LRA
- U.S. Forest Service
- National Park Service
- Bureau of Land Management
- Bureau of Indian Affairs
- Lassen
- Shasta-Trinity

Scale: 1:40,000
0 1 2 Miles