

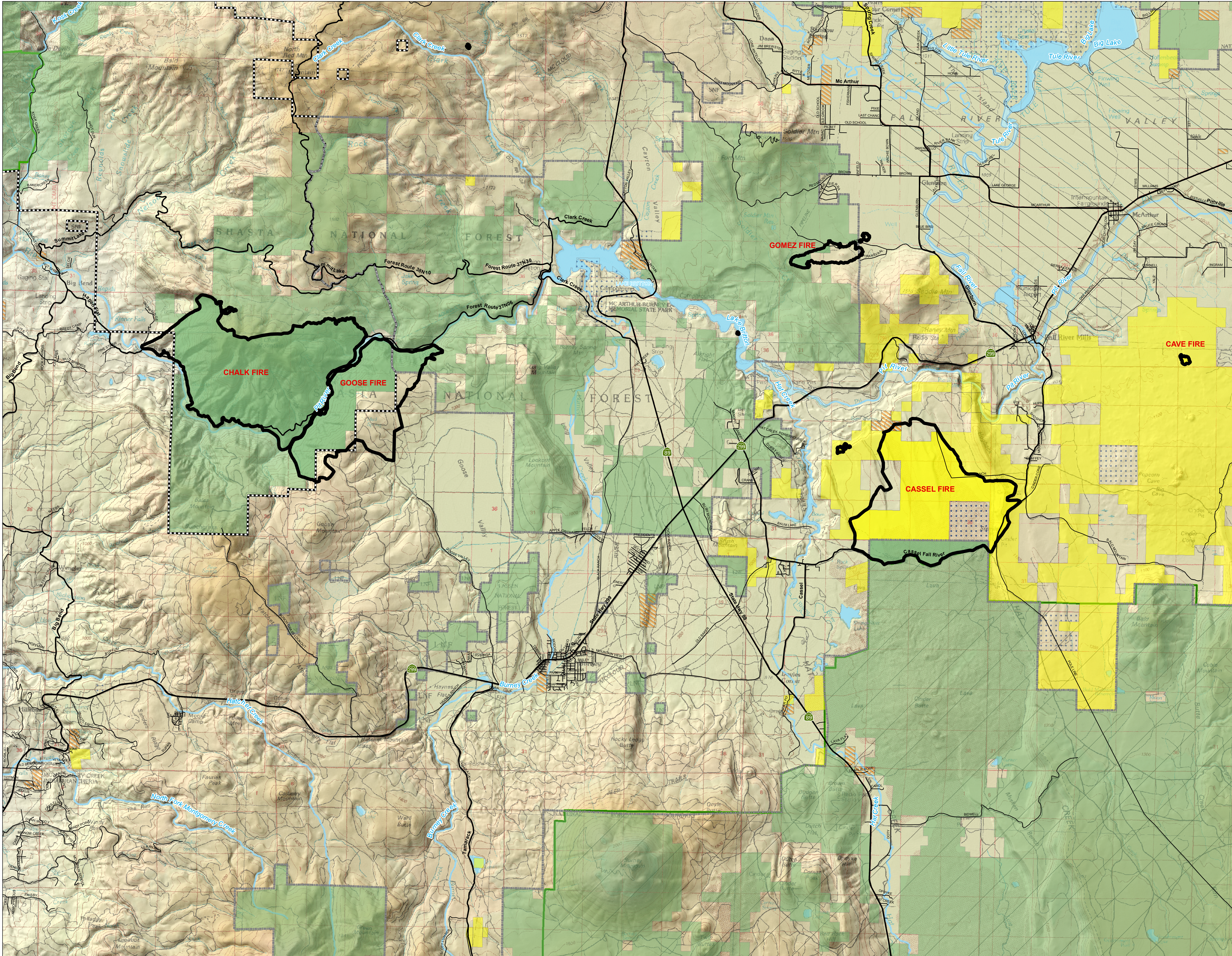


CA SHU 005594

SHU LIGHTNING COMPLEX

Burney LCA OWNERSHIP

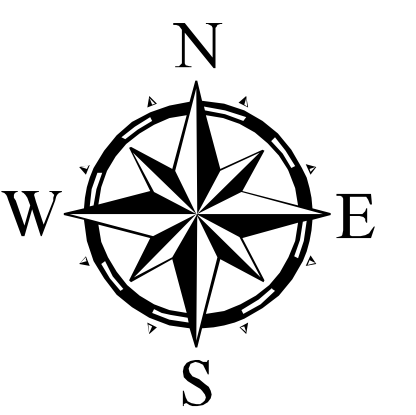
August 17, 2009



OWNERSHIP	
US Forest Service	
Shasta-Trinity NF	
Chalk	6,640 ac
Goose	2,484 ac
Shasta-Trinity NF Total	9,125 ac
Lassen NF	
Cassel	827 ac
Gomez	127 ac
Lassen NF Total	954 ac
US Forest Service Total	10,079 ac
State Lands Commission	
Cassel	641 ac
State Total	641 ac
Private Ownership	
Cassel	733 ac
Chalk	208 ac
Gomez	298 ac
Goose	1,465 ac
Fires 1 to 10 Acres	6 ac
Private Ownership Total	2,709 ac
Bureau of Land Management	
Cassel	3,872 ac
Cave	24 ac
Fires 1 to 10 Acres	19 ac
BLM Total	3,915 ac
Bureau of Indian Affairs	
Cassel	24 ac
BIA Total	24 ac
Grand Total	17,368 acres

Disclaimer:
 Ownership data based on BLM LND_SurfaceEstate data - LandStatus.gdb.zip Federal and State managed lands in California and Nevada. Last updated / modified on 8/11/2009.
 BIA data based on Ca_Res_Boundary_2009102 and C_PDAs_2009102 shapefiles.

- Fire Perimeter 8/15/2009 20:11 hrs
- Ownership**
- US Forest Service
- BLM
- BIA
- State Lands Commission
- Private Ownership
- Direct Protection Authority**
- SRA
- LRA
- U.S. Forest Service
- USFS Administrative Forest Boundary**
- Lassen NF
- Shasta-Trinity NF



1:48,000

