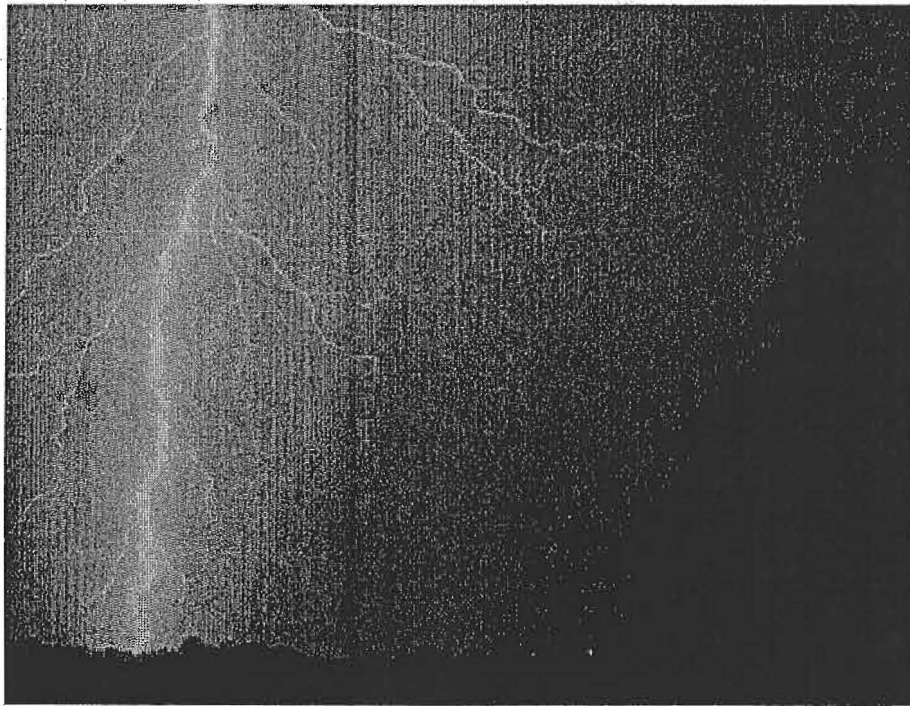


SHU Lightning Complex



CASHU 005594

8/3/09-8/4/09

0700-0700

INCIDENT OBJECTIVES	1. Incident Name SHU LIGHTNING COMPLEX	2. Date 8/2/09	3. Time 2000
4. Operational Period 8/3/09-8/4/09 0700-0700			
5. General Control Objectives for the Incident (include alternatives) <u>Management Objectives</u> <ul style="list-style-type: none"> • Provide for firefighter and public safety. • Locate, prioritize and staff fires. • Provide logistical support for all SHU incidents. • Maintain accurate resource tracking for all Incidents for financial accountability. • Provide accurate and timely information to the public, media and cooperating agencies. <u>Control Objective</u> <ul style="list-style-type: none"> • Keep all fires contained within control lines • Mop-up, patrol and provide fire suppression repair of existing fireline. • Establish control lines and contain fires. 			
6. Weather Forecast for Period <ul style="list-style-type: none"> • Read attached weather briefing. • Be aware of shifting wind directions due to passing storm fronts and thunder cells. • Monitor weather conditions and be prepared for lowering humidity and higher temperatures. 			
7. General Safety Message <ul style="list-style-type: none"> • Read attached safety message. 			
8. Attachments (mark if attached)			
<input checked="" type="checkbox"/> Organization List - ICS 203 <input checked="" type="checkbox"/> Medical Plan - ICS 206 <input checked="" type="checkbox"/> Weather Forecast <input checked="" type="checkbox"/> Div. Assignment Lists - ICS 204 <input checked="" type="checkbox"/> Incident Map <input checked="" type="checkbox"/> Air Ops Summary <input checked="" type="checkbox"/> Communications Plan - ICS 205 <input type="checkbox"/> Traffic Plan <input type="checkbox"/>			
9. Prepared by (Planning Section Chief) Kim De Sena		10. Approved by (Incident Commander) Doug Wenham	

ORGANIZATION ASSIGNMENT LIST		Ground Support Unit	Danny Sykes
		Communications Unit	Dave Hotchkiss
1. Incident Name SHU LIGHTNING COMPLEX		Medical Unit	
2. Date 8/2/09		Security Unit	
3. Time 2000		Food Unit	
4. Operational Period 8/3/09-8/4/09 0700-0700		9. Operations Section	
Position		OP's Chief	Mike Hebrard
Name		Planning Ops	
a. Branch II - Burney			
5. Incident Commander and Staff		Branch Director	Nick Truax (Burney LCA) / Beau Tipton
Incident Commander	Doug Wenham	Deputy	
Deputy		Division/Group	
Safety Officer	Jim Ferguson	Division/Group	
Information Officer	Linda Galvin	b. Branch III - Big Bend	
Liaison Officer	Kelly Dreesman	Branch Director	Nick Truax (Burney LCA) / Buck Thomas
6. Agency Representative		Deputy	
Agency	Name	Division/Group	Garret Quigley
		Division/Group	
		b. Branch III - BackBone	
		Branch Director	Brian Noel
		Deputy	
		Division/Group	Merrick Fields
		Division/Group	
		Division/Group	
c. Fall River Helibase			
7. Planning Section		Branch Director	
Chief	Gabriel Schultz / Kim De Sena	Deputy	
Deputy		Division/Group	
Resources Unit	Gabriel Schultz / Kim De Sena	d. Air Operations Branch	
Situation Unit	Ben Rowe	Air Operations Branch Director	
Documentation Unit		Air Attack Supervisor	Mark Kendall
Demobilization Unit		Helicopter Coordinator	
Technical Specialists		Helibase Manager	
Human Resources		10. Finance Section	
Training		Chief	
Training		Deputy	
GISS	JT Zulliger	Time Unit	
FBAN		Procurement Unit	
8. Logistics Section		Compensation/Claims Unit	
Chief	Ken Lowe	Cost Unit	
Deputy	Jim Mobley	Prepared by (Resource Unit Leader)	
Supply Unit	Colleen Sykes	GABRIEL SCHULTZ	
Facilities Unit	Randy Moorhead		

DIVISION ASSIGNMENT LIST		1. Branch I - Burney (page 1)		2. Division/Group		Latitude/ Longitude	
3. Incident Name SHU Lightning Complex			4. Operational Period Date: 8/3/09-8/4/09 Time: 0700-0700				
5. Operations Personnel							
Operations Chief		Division/Group Supervisor					
Branch Director Nick Truax/B. Tipton		Air Attack Supervisor No.					
6. Resources Assigned this Period							
Strike Team/Task Force/ Resource Designator	Leader	Number Persons	Trans. Needed	Drop Off PT./Time	Pick Up PT./Time	On Line	Off Line
DIVS TBA		1		Burney HS	0700	<input type="checkbox"/>	<input type="checkbox"/>
DIVS TBA		1		Burney HS	0700	<input type="checkbox"/>	<input type="checkbox"/>
DIVS TBA		1		Burney HS	0700	<input type="checkbox"/>	<input type="checkbox"/>
Faller Lone Pine		1		Burney HS	0700	<input type="checkbox"/>	<input type="checkbox"/>
Faller Randy Star		1		Burney HS	0700	<input type="checkbox"/>	<input type="checkbox"/>
ST 9145C		21		Burney HS	0700	<input type="checkbox"/>	<input type="checkbox"/>
ST 9270C		21		Burney HS	0700	<input type="checkbox"/>	<input type="checkbox"/>
ST ENG TBA				Burney HS	0700	<input type="checkbox"/>	<input type="checkbox"/>
ST ENG TBA				Burney HS	0700	<input type="checkbox"/>	<input type="checkbox"/>
ST ENG TBA				Burney HS	0700	<input type="checkbox"/>	<input type="checkbox"/>
ST ENG TBA				Burney HS	0700	<input type="checkbox"/>	<input type="checkbox"/>
ST ENG TBA				Burney HS	0700	<input type="checkbox"/>	<input type="checkbox"/>
7. Control Operations Establish control lines and suppress fire to limit acreage.							
8. Special Instructions Remember that "SAFETY" is our number 1 priority!							
9. Division/Group Communication Summary							
Function	Frequency	System	Channel	Function	Frequency	System	Channel
Command	Tx 159.450 Rx 151.175	King NIFC	CMD 9 Tone 9	Logistics		King NIFC	
Tactical Div/Group	Tx 151.385 Rx 151.385	King NIFC	CDF Tac 9	Air to Ground	151.220	King NIFC	CDF A/G
Prepared by (Resource Unit Ldr.) Gabriel Schultz		Approved by (Planning Sect. Ch.)		Date 8/2/09		Time 2000	

DIVISION ASSIGNMENT LIST		1. Branch 1 - Burney (Page 2)		2. Division/Group		Latitude/ Longitude	
3. Incident Name SHU Lightning Complex		4. Operational Period Date: 8/3/09 - 8/4/09 Time: 0700-0700					
5. Operations Personnel							
Operations Chief		Division/Group Supervisor					
Branch Director		Nick Truax/B. Tipton		Air Attack Supervisor No.			
6. Resources Assigned this Period							
Strike Team/Task Force/ Resource Designator	Leader	Number Persons	Trans. Needed	Drop Off PT./Time	Pick Up PT./Time	On Line	Off Line
ST ENG TBA				Burney HS	0700	<input type="checkbox"/>	<input type="checkbox"/>
ST 9125G		16		Burney HS	0700	<input type="checkbox"/>	<input type="checkbox"/>
ST CRW TBA				Burney HS	0700	<input type="checkbox"/>	<input type="checkbox"/>
ST CRW TBA				Burney HS	0700	<input type="checkbox"/>	<input type="checkbox"/>
ST CRW TBA				Burney HS	0700	<input type="checkbox"/>	<input type="checkbox"/>
ST CRW TBA				Burney HS	0700	<input type="checkbox"/>	<input type="checkbox"/>
ST CRW TBA				Burney HS	0700	<input type="checkbox"/>	<input type="checkbox"/>
Doz 2444		2		Burney HS	0700	<input type="checkbox"/>	<input type="checkbox"/>
Doz 2440		2		Burney HS	0700	<input type="checkbox"/>	<input type="checkbox"/>
Doz E22		2		Burney HS	0700	<input type="checkbox"/>	<input type="checkbox"/>
Doz E32		2		Burney HS	0700	<input type="checkbox"/>	<input type="checkbox"/>
Doz E33		2		Burney HS	0700	<input type="checkbox"/>	<input type="checkbox"/>
7. Control Operations Establish control lines and suppress fire to limit acreage.							
8. Special Instructions Remember that "SAFETY" is our number 1 priority!							
9. Division/Group Communication Summary							
Function	Frequency	System	Channel	Function	Frequency	System	Channel
Command	Tx 159.450	King NIFC	CMD 9 Tone 9	Logistics		King NIFC	
	Rx 151.175						
Tactical Div/Group	Tx 151.385	King NIFC	CDF Tac 9	Air to Ground	151.220	King NIFC	CDF A/G
	Rx 151.385						
Prepared by (Resource Unit Ldr.) Gabriel Schultz		Approved by (Planning Sect. Ch.)		Date 8/2/09		Time 2000	

DIVISION ASSIGNMENT LIST		1. Branch I - Burney (Page 3)		2. Division/Group		Latitude/ Longitude	
3. Incident Name SHU Lightning Complex		4. Operational Period Date: 8/3/09-8/4/09 Time: 0700-0700					
5. Operations Personnel							
Operations Chief		Division/Group Supervisor					
Branch Director Nick Truax/B. Tipton		Air Attack Supervisor No.					
6. Resources Assigned this Period							
Strike Team/Task Force/ Resource Designator	Leader	Number Persons	Trans. Needed	Drop Off PT./Time	Pick Up PT./Time	On Line	Off Line
ST 9144L		5		Burney HS	0700	<input type="checkbox"/>	<input type="checkbox"/>
Doz 2442		2		Burney HS	0700	<input type="checkbox"/>	<input type="checkbox"/>
Doz E58		2		Burney HS	0700	<input type="checkbox"/>	<input type="checkbox"/>
Doz E59		2		Burney HS	0700	<input type="checkbox"/>	<input type="checkbox"/>
Doz E60		2		Burney HS	0700	<input type="checkbox"/>	<input type="checkbox"/>
Doz E61		2		Burney HS	0700	<input type="checkbox"/>	<input type="checkbox"/>
Doz 1443		2		Burney HS	0700	<input type="checkbox"/>	<input type="checkbox"/>
WT 15		2		Burney HS	0700	<input type="checkbox"/>	<input type="checkbox"/>
WT 10		2		Burney HS	0700	<input type="checkbox"/>	<input type="checkbox"/>
WT 11		2		Burney HS	0700	<input type="checkbox"/>	<input type="checkbox"/>
WT 16		2		Burney HS	0700	<input type="checkbox"/>	<input type="checkbox"/>
WT TBA				Burney HS	0700	<input type="checkbox"/>	<input type="checkbox"/>
7. Control Operations Establish control lines and suppress fire to limit acreage.							
8. Special Instructions Remember that "SAFETY" is our number 1 priority!							
9. Division/Group Communication Summary							
Function	Frequency	System	Channel	Function	Frequency	System	Channel
Command	Tx 159.450 Rx 151.175	King NIFC	CMD 9 Tone 9	Logistics		King NIFC	
Tactical Div/Group	Tx 151.385 Rx 151.385	King NIFC	CDF Tac 9	Air to Ground	151.220	King NIFC	CDF A/G
Prepared by (Resource Unit Ldr.) Gabriel Schultz		Approved by (Planning Sect. Ch.)		Date 8/2/09		Time 2000	

DIVISION ASSIGNMENT LIST		1. Branch I - Burney (Page 4)	2. Division/Group	Latitude/ Longitude			
3. Incident Name SHU Lightning Complex		4. Operational Period Date: 8/3/09-8/4/09 Time: 0700-0700					
5. Operations Personnel							
Operations Chief		Division/Group Supervisor					
Branch Director	Nick Truax/B. Tipton	Air Attack Supervisor No.					
6. Resources Assigned this Period							
Strike Team/Task Force/ Resource Designator	Leader	Number Persons	Trans. Needed	Drop Off PT./Time	Pick Up PT./Time	On Line	Off Line
WT TBA				Burney HS	0700	<input type="checkbox"/>	<input type="checkbox"/>
WT TBA				Burney HS	0700	<input type="checkbox"/>	<input type="checkbox"/>
WT TBA				Burney HS	0700	<input type="checkbox"/>	<input type="checkbox"/>
						<input type="checkbox"/>	<input type="checkbox"/>
						<input type="checkbox"/>	<input type="checkbox"/>
						<input type="checkbox"/>	<input type="checkbox"/>
						<input type="checkbox"/>	<input type="checkbox"/>
						<input type="checkbox"/>	<input type="checkbox"/>
						<input type="checkbox"/>	<input type="checkbox"/>
						<input type="checkbox"/>	<input type="checkbox"/>
						<input type="checkbox"/>	<input type="checkbox"/>
						<input type="checkbox"/>	<input type="checkbox"/>
						<input type="checkbox"/>	<input type="checkbox"/>
7. Control Operations Establish control lines and suppress fire to limit acreage.							
8. Special Instructions Remember that "SAFETY" is our number 1 priority!							
9. Division/Group Communication Summary							
Function	Frequency	System	Channel	Function	Frequency	System	Channel
Command	Tx 159.450 Rx 151.175	King NIFC	CMD Tone 9	Logistics		King NIFC	
Tactical Div/Group	Tx 151.385 Rx 151.385	King NIFC	CDF Tac 9	Air to Ground	151.220	King NIFC	CDF A/G
Prepared by (Resource Unit Ldr.) Gabriel Schultz		Approved by (Planning Sect. Ch.)		Date 8/2/09		Time 2000	

DIVISION ASSIGNMENT LIST		1. Branch II- Big Bend		2. Division/Group			
3. Incident Name SHU Lightning Complex		4. Operational Period Date: 8/3/09-/8/4/09 Time: 0700-0700					
5. Operations Personnel							
Operations Chief	Mike Hebrard	Division/Group Supervisor	Garret Quigley				
Branch Director	Nick Truax/Buck Thomas	Air Attack Supervisor No.	Mark Kendall				
6. Resources Assigned this Period							
Strike Team/Task Force/ Resource Designator	Leader	Number Persons	Trans. Needed	Drop Off PT./Time	Pick Up PT./Time		
ST ENG TBA		16		Burney HS	0700		
ENG 2485		4		Burney HS	0700		
ENG 2478		4		Burney HS	0700		
ENG 2469		4		Burney HS	0700		
ENG 570		4		Burney HS	0700		
ST 9254 G		32		Burney HS	0700		
ST CRW TBA				Burney HS	0700		
ST CRW TBA				Burney HS	0700		
ST CRW TBA				Burney HS	0700		
DOZ E-25 Packway		2		Burney HS	0700		
DOZ TBA				Burney HS	0700		
WT TBA				Burney HS	0700		
7. Control Operations Establish control lines and suppress fire o limit acreage.							
8. Special Instructions Remember that "Safety" is our number 1 priority!							
9. Division/Group Communication Summary							
Function	Frequency	System	Channel	Function	Frequency	System	Channel
Command	Rx 151.175 Tx 159.450	King NIFC	CDF C-9 Tone 9	Logistics		King NIFC	
Tactical Div/Group	151.385	King NIFC	CDFT-9	Air to Ground	151.220	King NIFC	CDF A/G
Prepared by (Resource Unit Ldr.) Gabriel Schultz		Approved by (Planning Sect. Ch.)		Date 8/2/09		Time 2000	

DIVISION ASSIGNMENT LIST		1. Branch III - Backbone		2. Division/Group			
3. Incident Name SHU Lightning Complex		4. Operational Period Date: 8/3/09-/8/4/09				Time: 0700-0700	
5. Operations Personnel							
Operations Chief		Mike Hebrard		Division/Group Supervisor		Merrick Fields	
Branch Director		Brian Noel		Air Attack Supervisor No.			
6. Resources Assigned this Period							
Strike Team/Task Force/ Resource Designator	Leader	Number Persons	Trans. Needed	Drop Off PT./Time	Pick Up PT./Time		
ENG 533		3		Sugar Pine Camp	0700		
ENG 2464		4		Sugar Pine Camp	0700		
ENG 2465		4		Sugar Pine Camp	0700		
Sugar Pine CRW 1		16		Sugar Pine Camp	0700		
Sugar Pine CRW 3		16		Sugar Pine Camp	0700		
Sugar Pine CRW 4		16		Sugar Pine Camp	0700		
Sugar Pine CRW 5		16		Sugar Pine Camp	0700		
ST 9255 G		32		Sugar Pine Camp	0700		
WT TBA				Sugar Pine Camp	0700		
WT TBA				Sugar Pine Camp	0700		
7. Control Operations Establish control lines and suppress fire to limit acreage.							
8. Special Instructions Remember that "Safety" is our number 1 priority!							
9. Division/Group Communication Summary							
Function	Frequency	System	Channel	Function	Frequency	System	Channel
Command	Tx 159.300	King NIFC	CDF C-1 Tone 2	Logistics		King NIFC	
	Rx 151.355						
Tactical Div/Group	151.460	King NIFC	CDF T-12	Air to Ground	151.220	King NIFC	CDF A/G
Prepared by (Resource Unit Ldr.) Gabriel Schultz		Approved by (Planning Sect. Ch.)			Date 8/2/09		Time 2000

DIVISION ASSIGNMENT LIST		1. Branch Fall River Helibase		2. Division/Group			
3. Incident Name SHU Lightning Complex		4. Operational Period Date: 8/3/09-/8/4/09 Time: 0700-0700					
5. Operations Personnel							
Operations Chief	Mike Hebrard	Division/Group Supervisor					
Helibase Manager	TBA	Air Attack Supervisor No.		TBA			
6. Resources Assigned this Period							
Strike Team/Task Force/ Resource Designator	Leader	Number Persons	Trans. Needed	Drop Off PT	Time		
HCWM TBA				Fall River Airport	0700		
HCWM TBA				Fall River Airport	0700		
HCWM TBA				Fall River Airport	0700		
HCWM TBA				Fall River Airport	0700		
HCWM TBA				Fall River Airport	0700		
Type I ENG TBA				Fall River Airport	0700		
WT TBA				Fall River Airport	0700		
7. Control Operations Support air operations							
8. Special Instructions Remember that "Safety" is our number 1 priority!							
9. Division/Group Communication Summary							
Function	Frequency	System	Channel	Function	Frequency	System	Channel
Command		King NIFC		Logistics		King NIFC	
Tactical Div/Group		King NIFC		Air to Ground	151.220	King NIFC	CDF A/G
Prepared by (Resource Unit Ldr.) Gabriel Schultz		Approved by (Planning Sect. Ch.)		Date 8/2/09		Time 2000	

SHU Lightning Complex Safety Message

August 3-4, 2009
24 Hour Shift 0700-0700

FOCUS

You are surrounded by hazards:

- Snags , widow makers, broken limbs
- Travel and Road issues
- Extreme Fire behavior
- Unexpected Thundershowers with Moisture (?)
- Dozer Operations
- Fatigue!
- Initial Attack

Some possible mitigations could include:

- Snags & falling limbs will be a long term problem- look up and around in your division- Be very vigilant!
- Faller's are working throughout the area, use caution when approaching!
- Weather forecast continues to call for lightning, which includes areas of potentially heavy rain showers or narrow "rain shaft" which could produce large amounts (up to $\frac{1}{2}$ ") of concentrated rain.
- Pay attention, as always, to debris on the roads and practice safe driving.
- Divisions: If roads become hazardous due to rain, move resources to DG or pavement in a clear area to avoid localized flooding- keep vehicles off outslped roads.
- Dozer Operations can be hazardous- hazards are not exclusive of falling trees, broken limbs and tops, rolling material and rocks. When a dozer is working on a side slope pay attention- keep your distance.
- If overly fatigued talk to you Division Supervisor- They can help.
- With the potential for lightning, IA will be important.

SHU Lightning Safety Officers Jim Ferguson, Scott Lindgren,
Tony Brownell

INCIDENT ACTION PLAN SAFETY ANALYSIS										1. Incident Name SHU Lightning Complex		2. Date 08/03-04/09		3. Time 0700-0700		
LCES* Analysis of Tactical Applications: Lookouts, Communications, Escape routes, Safety zones										Other Risk Analysis						
Division/Group	Indirect Fireline	Downhill Fireline	Underlying Fireline	Mix-slope Fireline	Frontal Assault	Anchor Points	Extreme Conditions (Spotting, Wind-driven)	Reburn Potential			LCES Mitigations	Hazard Materials	Transportation, 1 Hr +	Communications	Structure Protection	Other Risk Mitigations
A	x	x	x	x	x	x	x	x			10's and 18's, hydrate and monitor crew	x	x	x	x	Wear seatbelts, drive with
L											for signs of heat exhaustion/heat stroke,					your headlights on, maintain
L											monitor weather for changes and					a safe distance when following
											thunderstorms, maintain situational					other vehicles, watch for
B											awareness, monitor for Firefighter					public traffic, bridges in area
R											Fatigue, watch for erratic fire behavior,					may not be adequate for fire-
A											watch footing in steep terrain, watch					fighting equipment due to
N											and stay away from snags, wear full					weight limitations.
C											PPE including eye protection and					
H											gloves.					
E																
S																
Prepared by (Name and Position) SHU Lightning Safety Officers-Jim Ferguson, Scott Lindgren, Tony Brownell																

WEATHER REPORT	1. INCIDENT NAME	2. DATE PREPARED	3. TIME PREPARED	4. OPERATIONAL PERIOD
	SHU Lightning Complex	8/2/09	1700	0700-0700 8/3/09-8/4/09

GUSTY WINDS AND LOW HUMIDITY POSSIBLE UPPER ELEVATIONS TUESDAY AND WEDNESDAY

DISCUSSION: A LOW PRESSURE SYSTEM THAT HAS BEEN NEARLY STATIONARY OFF THE CALIFORNIA COAST WILL FINALLY SHIFT INLAND BY MID-WEEK. THE TREND WILL BE TOWARD DECREASING THUNDERSTORMS...COOLER TEMPERATURES AND INCREASING SOUTHWEST WINDS IN THE MOUNTAINS. SHOWERS AND THUNDERSTORMS MAY REDEVELOP IN THE MOUNTAINS WEDNESDAY AND THURSDAY.

NORTHERN SIERRA INCLUDING LASSEN NP AND PLUMAS AND LASSEN NF/S WEST OF THE SIERRA CREST (WEST OF EVANS PEAK-GRIZZLY PEAK-BECKWORTH PEAK) -

Monday 3, 2009

SKY/WEATHER.....MOSTLY SUNNY IN THE MORNING. PARTLY CLOUDY IN THE AFTERNOON WITH A SLIGHT CHANCE OF SHOWERS AND THUNDERSTORMS IN THE AFTERNOON.

MAX TEMPERATURE.....75-90.

24 HR TREND.....LITTLE CHANGE.

MIN HUMIDITY.....18-29 PERCENT.

24 HR TREND.....LITTLE CHANGE.

20-FOOT WINDS.....

VALLEYS/LWR SLOPES...UPSLOPE/UPVALLEY 3 TO 7 MPH BECOMING SOUTHWEST 8 TO 12 MPH IN THE AFTERNOON.

RIDGES/UPR SLOPES....EAST WINDS 5 TO 15 MPH IN THE MORNING. WEST WINDS 15 TO 25 MPH IN THE AFTERNOON.

LAL.....2.

CHC OF WETTING RAIN.10 PERCENT.

Monday Night

SKY/WEATHER.....MOSTLY CLEAR EXCEPT FOR A SLIGHT CHANCE OF SHOWERS AND THUNDERSTORMS IN THE EVENING.

MIN TEMPERATURE 45-58.

MAX HUMIDITY 55-76 PERCENT.

20-FOOT WINDS.....

VALLEYS/LWR SLOPES...SOUTHWEST WINDS 8 TO 14 MPH IN THE EVENING BECOMING DOWNSLOPE/DOWNVALLEY 3 TO 7 MPH.

RIDGES/UPR SLOPES....SOUTHWEST WINDS 15 TO 25 MPH IN THE EVENING. EAST WINDS 5 TO 15 MPH OVERNIGHT.

LAL 2. DECREASING TO 1 EARLY IN THE MORNING.

CHC OF WETTING RAIN.10 PERCENT.

Tuesday 4, 2009

SKY/WEATHER.....MOSTLY SUNNY. WINDY UPPER ELEVATIONS.

MAX TEMPERATURE 73-86.

MIN HUMIDITY 19-30 PERCENT.

20-FOOT WINDS.....

VALLEYS/LWR SLOPES...UPSLOPE/UPVALLEY 5 TO 10 MPH BECOMING SOUTH 12 TO 18 MPH IN THE AFTERNOON.

RIDGES/UPR SLOPES....SOUTHWEST WINDS 15 TO 25 MPH. GUSTS TO 35
MPH IN THE AFTERNOON.

LAL 1.

CHC OF WETTING RAIN.0 PERCENT.

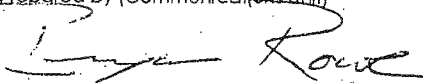
EXTENDED

SHASTA COUNTY MOUNTAINS AND COASTAL RANGE

WEDNESDAY THROUGH FRIDAY...PARTLY CLOUDY WITH SLIGHT CHANCE OF SHOWERS
AND THUNDERSTORMS. LOWS IN THE 50S. HIGHS 75 TO 85. SOUTHWEST WINDS 15
TO 25 MPH UPPER ELEVATIONS AT TIMES.

NORTHERN SIERRA AND LASSEN PARK

WEDNESDAY...MOSTLY CLEAR. LOWS IN THE 50S. HIGHS 75 TO 85.
SOUTHWEST WINDS 15 TO 30 MPH UPPER ELEVATIONS. THURSDAY AND
FRIDAY...PARTLY CLOUDY WITH SLIGHT CHANCE OF SHOWERS AND THUNDERSTORMS.
LOWS 45 TO 55. HIGHS IN THE 70S. SOUTHWEST WINDS 10 TO 20 MPH.

INCIDENT RADIO COMMUNICATIONS PLAN		1. Incident Name SHU Lightning SHU-5594		2. Date/Time Prepared 8/3/09, 1900 hrs		3. Operational Period Date/Time 8/3/09 – 8/4/09 0700-0700hrs	
4. Basic Radio Channel Utilization							
Radio Type/Cache	Channel	Function	Frequency/Tone	Assignment	Remarks		
King NIFC	CMD 9 Tone 9	Command	Rx 151.175 Tx 159.450	Burney LCA Big Bend			
King NIFC	CDF Tac 9	Tactical	Rx 151.385 Tx 151.385	Burney LCA Big Bend			
King NIFC	CMD 1 Tone 2	Command	Rx 151.355 Tx 159.300	Backbone			
King NIFC	CDF Tac 12	Tactical;	Rx 151.460 Tx 151.460	Backbone			
King NIFC	CDF A/G	Air to Ground	Rx 151.220 Tx 151.220	All			
King NIFC	SHU Local Tone 9	New incidents Medical emergencies	Rx 151.560 Tx 151.270	All			
King NIFC							
King NIFC							
5. Prepared by (Communications Unit) 							

MEDICAL PLAN	1. INCIDENT NAME SHU Lightning	2. DATE PREPARED 8/2/2009	3. TIME PREPARED 1530	4. OPERATIONAL PERIOD 8/3/09-8/4/09 0700-0700
---------------------	-----------------------------------	------------------------------	--------------------------	---

5. INCIDENT MEDICAL AID STATION

MEDICAL AID STATIONS	LOCATION	PARAMEDICS	
		YES	NO
CAL FIRE Personnel	On engines and at CAL FIRE stations.	<input type="checkbox"/>	<input checked="" type="checkbox"/>
		<input type="checkbox"/>	<input type="checkbox"/>
		<input type="checkbox"/>	<input type="checkbox"/>
		<input type="checkbox"/>	<input type="checkbox"/>
		<input type="checkbox"/>	<input type="checkbox"/>

6. TRANSPORTATION

A. AMBULANCE SERVICES

NAME	ADDRESS	PHONE	PARAMEDICS	
			YES	NO
Redding ECC	Contact Redding ECC for all air or ground transport	530-225-2411	<input checked="" type="checkbox"/>	<input type="checkbox"/>
Mercy Medical Center	2175 Rasaline Ave., Redding, CA	530-225-6000	<input checked="" type="checkbox"/>	<input type="checkbox"/>
Shasta Regional Medical Center	1100 Butte St., Redding, CA	530-244-5400	<input checked="" type="checkbox"/>	<input type="checkbox"/>
Burney Ambulance	Burney, CA (contact SHU ECC)	530-225-2411	<input checked="" type="checkbox"/>	<input type="checkbox"/>
Mayers Memorial Hospital	43563 HWY 299. Mc Arthur, CA	530-336-5511	<input checked="" type="checkbox"/>	<input type="checkbox"/>

B. INCIDENT AMBULANCES

NAME	LOCATION	PARAMEDICS	
		YES	NO
		<input type="checkbox"/>	<input type="checkbox"/>
		<input type="checkbox"/>	<input type="checkbox"/>
		<input type="checkbox"/>	<input type="checkbox"/>
		<input type="checkbox"/>	<input type="checkbox"/>

7. HOSPITALS

NAME	ADDRESS	TRAVEL TIME		PHONE	HELIPAD		BURN CENTER	
		AIR	GRND		YES	NO	YES	NO
Mercy Medical Center	2175 Rasaline Ave., Redding, CA	15-30min	1-2 hours	530-225-6000	X	<input type="checkbox"/>	<input type="checkbox"/>	X
Shasta Regional Hospital	1100 Butte St., Redding, CA	15-30min	1-2 hours	530-244-5353	X	<input type="checkbox"/>	<input type="checkbox"/>	X
UC Davis	2315 Stocton Blvd., Sacramento, CA	1.5 hours	2.5-3 hours	(916) 734-2130	X	<input type="checkbox"/>	X	
Mayers Memorial	43563 HWY 299. Mc Arthur, CA	15-30min	.5 - 1.5 hours	530-336-5511	X	<input type="checkbox"/>	<input type="checkbox"/>	X
		<input type="checkbox"/>	<input type="checkbox"/>		<input type="checkbox"/>	<input type="checkbox"/>	<input type="checkbox"/>	<input type="checkbox"/>

8. MEDICAL EMERGENCY PROCEDURES

Report All injuries / illness to supervisor.
 Initial care by on scene personnel.
 All injuries/illness will be reported to Div/Grp Sups or Branch Directors
 Div/Grp Sups or Branch Directors contact ECC and declare "Medical Emergency" and request appropriate ambulance transportation via ground or air.

9. PREPARED BY (MEDICAL UNIT LEADER) 	10. REVIEWED BY (SAFETY OFFICER)
--	----------------------------------

13. TASKS/MISSION ASSIGNMENT (Type/Function includes: Air Tactical, Helicopter Coordinator, Fixed Wing: Retardant, Rotor Wing: Helitanker: Retardant/Foam, Rotor Wing: Retardant and or Foam, Personnel & Cargo Transport, Dip Site Locations and Names, Initial Attack and Air Rescue Helicopters, and Other.)

TYPE/FUNCTION	NAME OF PERSONNEL AND/OR CARGO INCLUDING INSTRUCTIONS FOR TACTICAL AIRCRAFT	MISSION START	FLY FROM	FLY TO
Air Tactical	Available from Redding AA240, AA500			
Helicopter Coordinator				
Fixed Wing: Retardant				
Helitanker: Retardant/Foam				
Rotor Wing: Retardant/Foam				
Recon/Plans	Available @ FALL RIVER HELIBASE Schedule through AOBD/SGS			
Personnel Transport				
Cargo Transport				
Dip Site Names and Locations	Coordinate with ATGS			
Initial Attack Helicopter	Order through SHU Local	0900		
Air Rescue Helicopter	See Medical Plan			
Other:				

AIR OPERATIONS SUMMARY 220

PREPARED BY: Mark Kendall

DATE: 8/2/09

1. INCIDENT NAME: Shasta Lightning Complex	2. OPERATIONAL DATE: 8/3/09	SUNRISE:	SUNSET: 1952
3. REMARKS (Safety Notes, Flight-Hazards, Other Hazards, Air Operations, and Special Equipment, etc.): Smokey conditions, frequency management, Diverts, etc. Safety is the #1 concern, know your incident name, Fx, and get clearance prior to entering a FTA.		4. AIR RESCUE AIRCRAFT: <i>Activation Instructions:</i> Activate thru SHU Local	
5. TFR/91.137: Radius: NM Altitude: MSL Center Point: Latitude: Longitude:			
Helibase(s) Name: FALL RIVER Lat./Long: N 41, 01.07 W 121, 25.59 089 Lat./Long:			

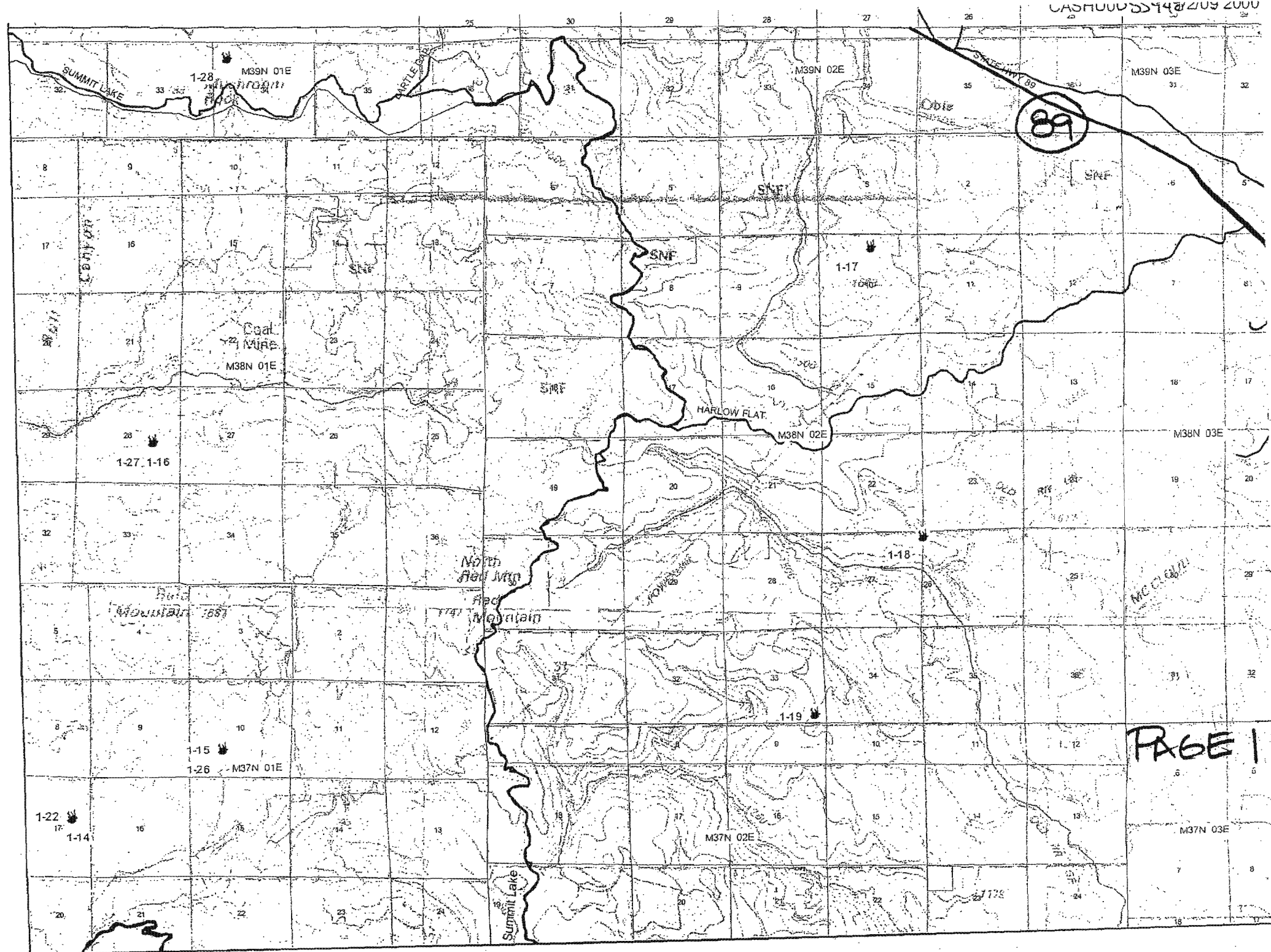
6a. Water Points: As directed by ATGS				6b. Helispots:				
6. PERSONNEL	Name	Telephone	Cellular	Pager	Fax	7. FREQUENCY	AM	FM
AOBD						AIR/AIR FW:	128.250	170.4625
ASGS						AIR/AIR RW:		151.3025
ASGS						AIR/GROUND:		
ATGS	SCOTT BROCKMAN @ 240					COMMAND: (Simplex)	CMD 9	
ATGS (Relief)	CRYSTAL HENSON @ 500					COMMAND RPT:	command 9	tone 9
HEBM	Rudy Yniguez	530-448-2450				DECK:	on order	
HELCO						TOLC:	on order	
DECK								
TOLC								
AGENCY AIRCRAFT DISPATCH OFFICE								
AGENCY AVIATION MILITARY LIAISON								

8. PERSONNEL ON ORDER: ABRO-DECK-ASGS-HEBM

SEE INCIDENT RADIO COMMUNICATIONS PLAN (205) FOR ALL OTHER FREQUENCIES!

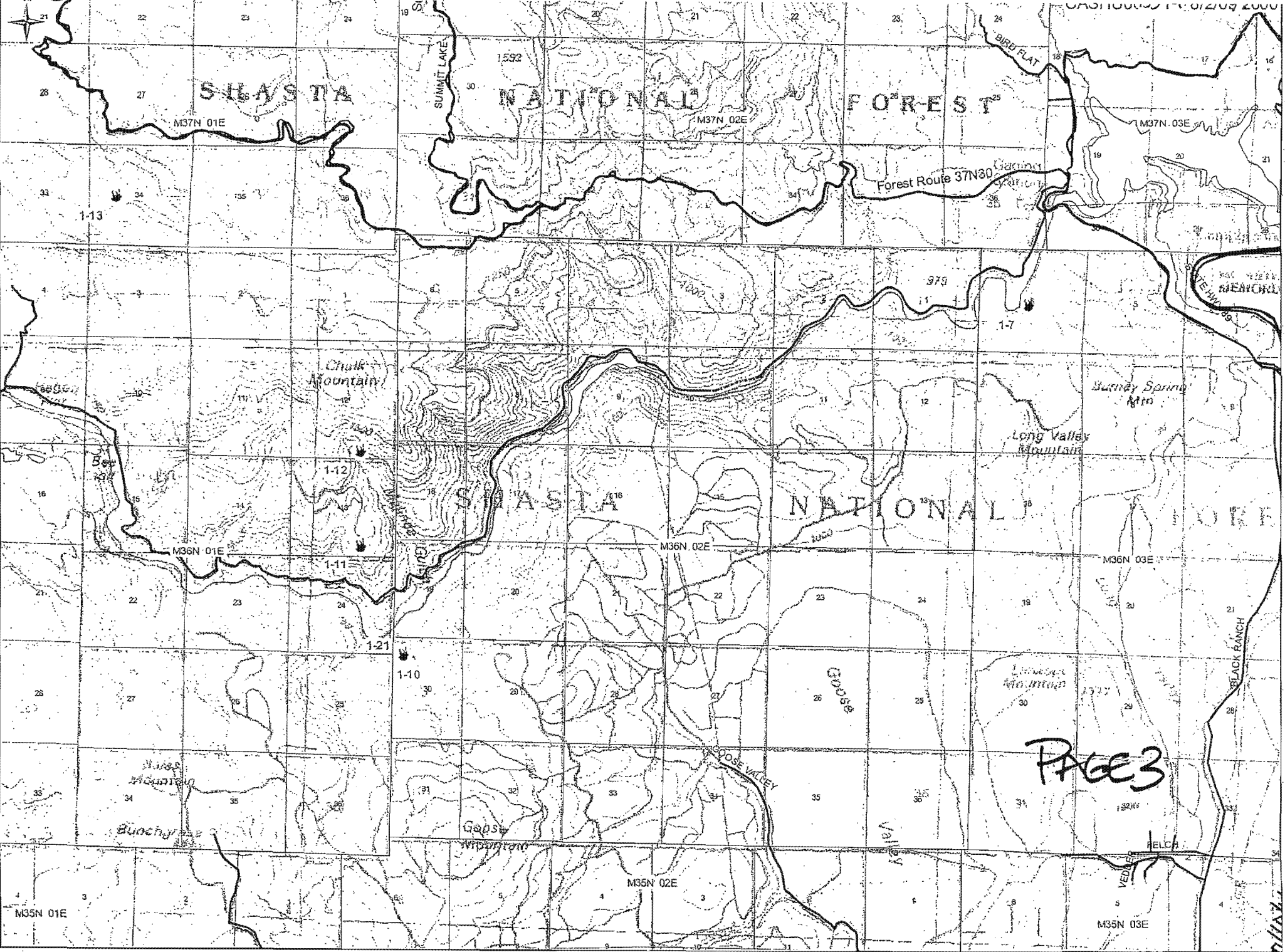
9. FIXED WING	Identifier	Base	10. ROTOR WING	Identifier	Base
Leadplane(s): Tanker(s): I: 3 II: III: 5 IV:		Redding Redding Redding	Type Helitanker(s): I: 1 II: 5 III: 2 IV:	N45917 205PJ, 207PJ, 217PJ, 198HM, C-101 N16726, 71HM	FALL RIVER HELIBASE FALL RIVER HELIBASE

11. SPECIAL ASSIGNED EQUIPMENT:
AIRCRAFT RESCUE FIRE FIGHTERS , on site at FALL RIVER helibase(s).
Helibase dust abatement Water Tender(s) 1 On order at helibase(s).

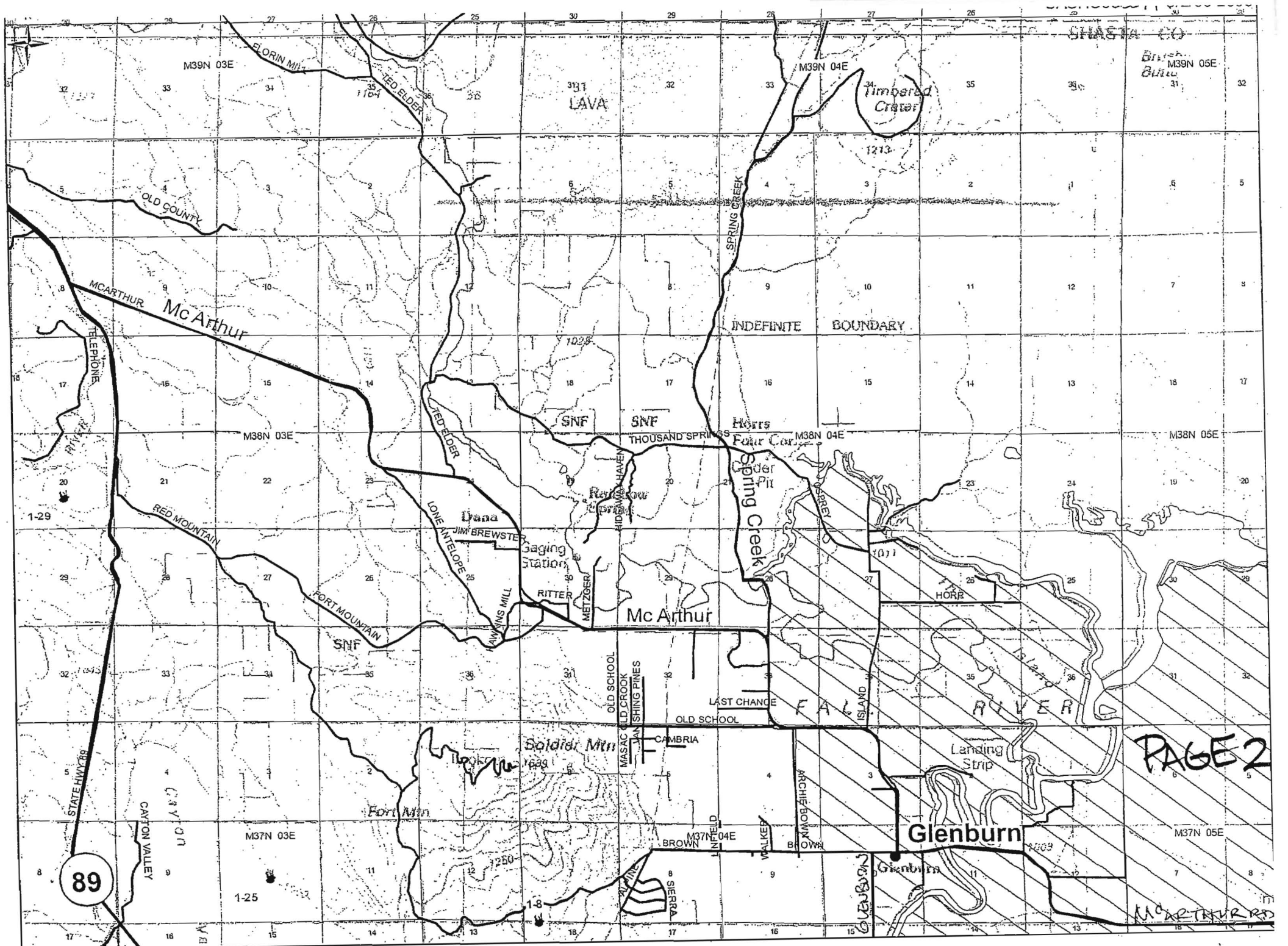


TRAVEL MAP
SHULIGHTNING
CA SHU005594
8/3/09

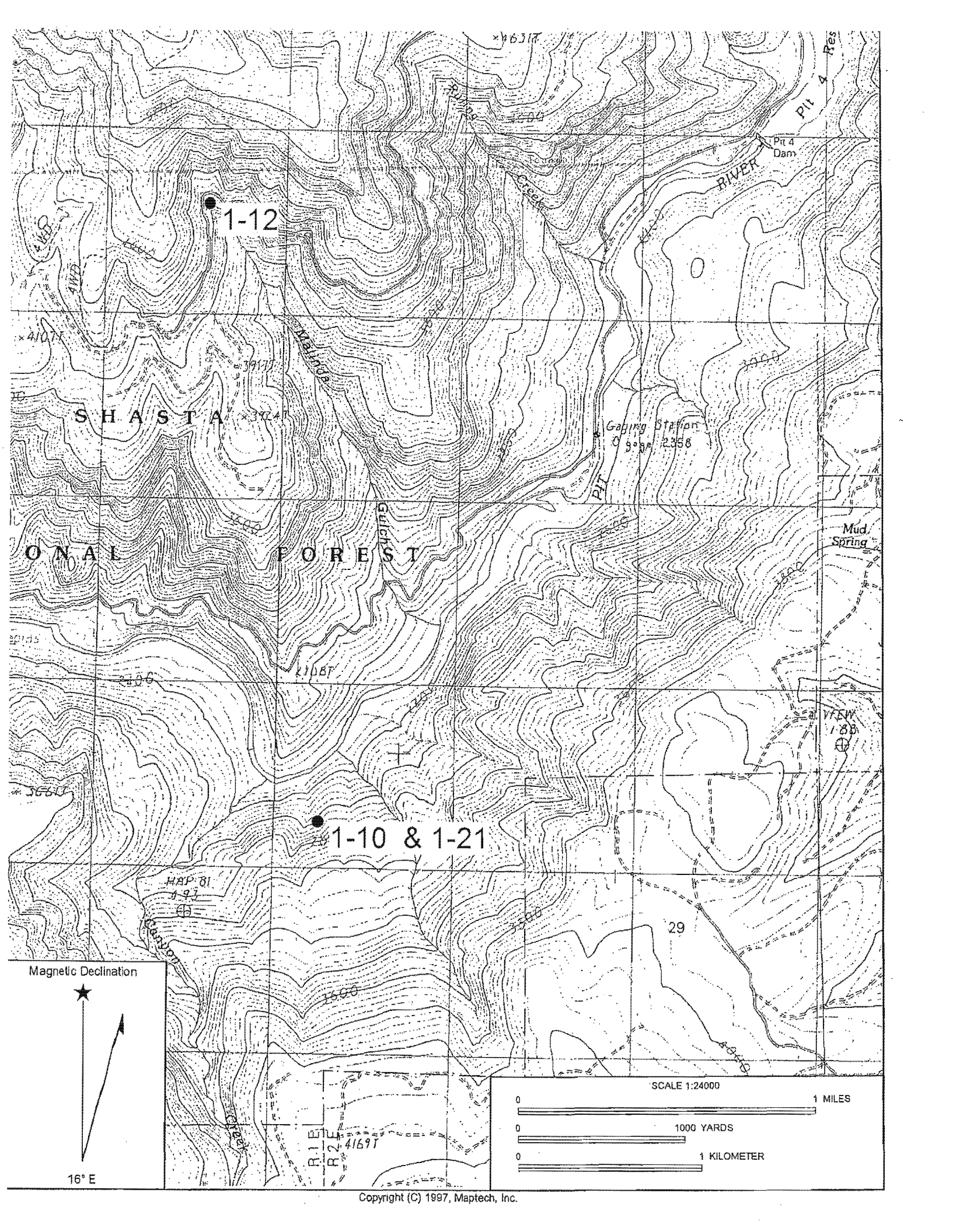




PAGE 3



PAGE 2



1-12

1-10 & 1-21

SHASTA

NATIONAL FOREST

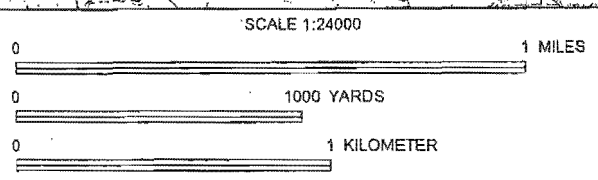
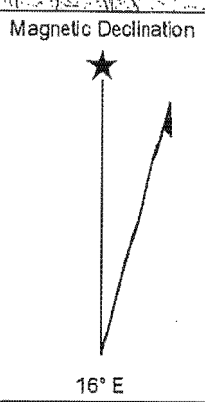
RIVER

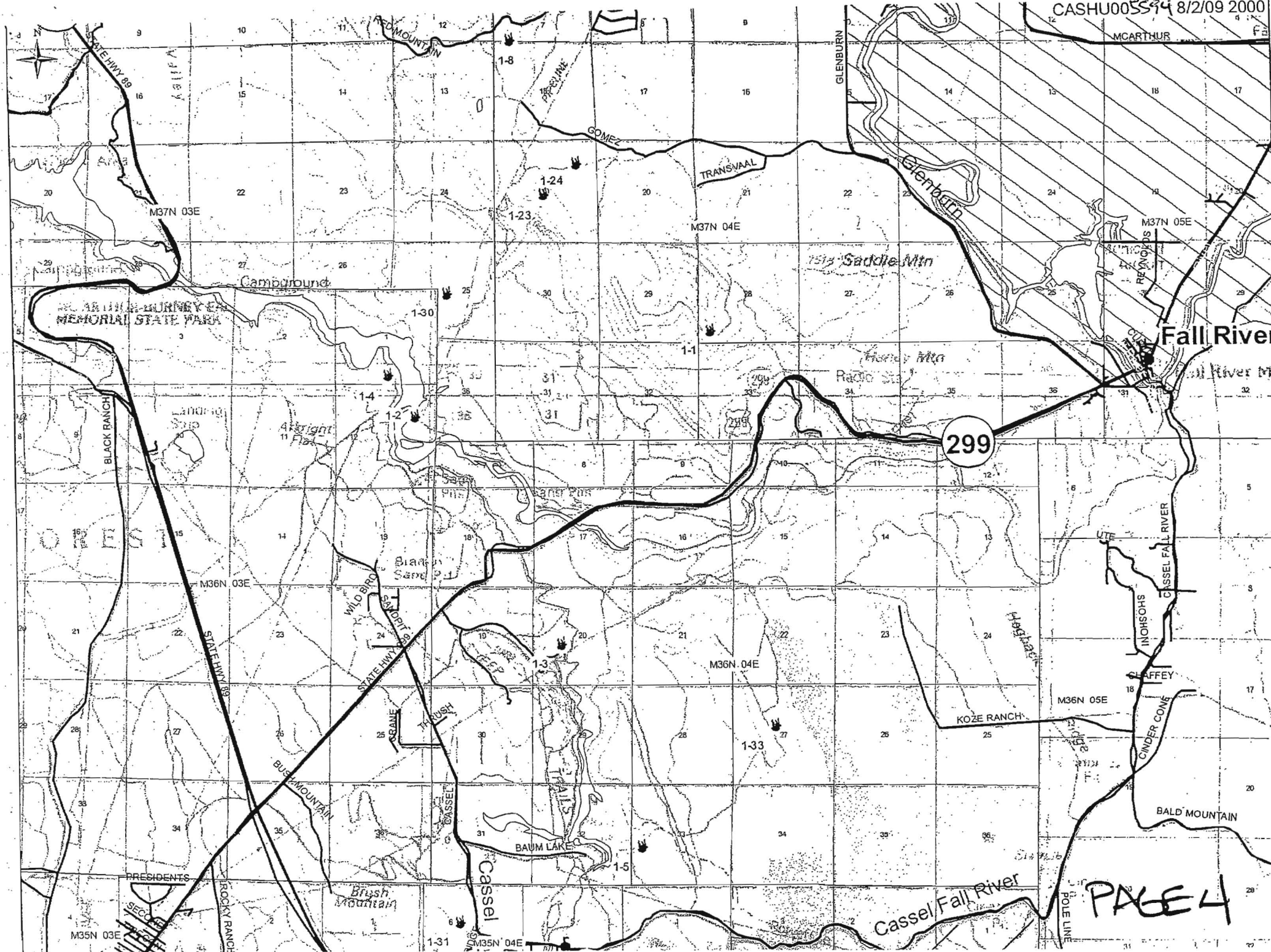
Pit 4 Dam

Gaging Station
0 9 0 2358

Mud Spring

VIEW
188





Fall River

299

PAGE 4



16° E

Magnetic Declination

SCALE 1:36000

1 MILES

0

1000

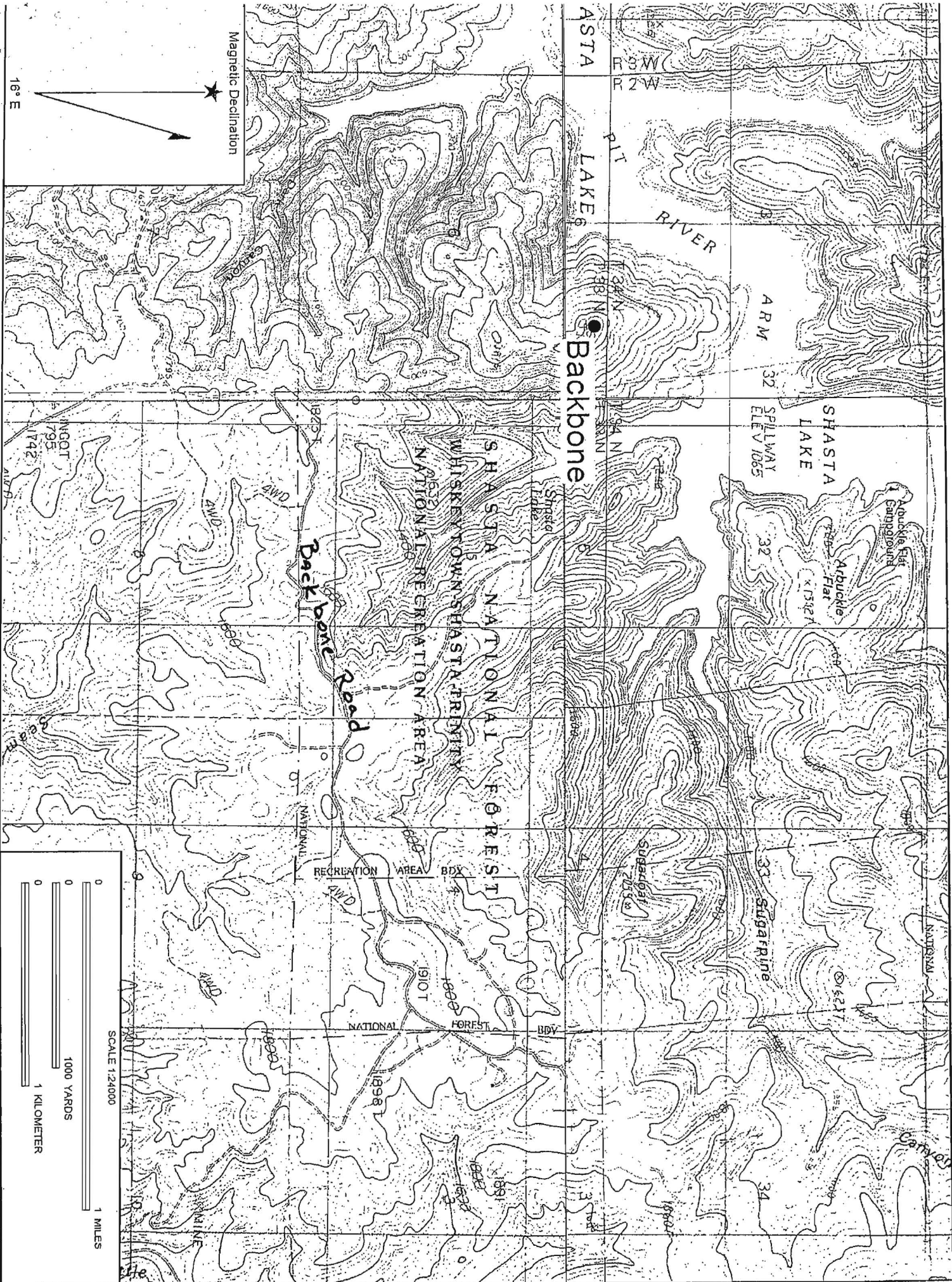
2000 YARDS

0

1

2 KILOMETERS





Magnetic Declination

16° E

ASTA
LAKE
PIT
RIVER
Backbone

ARM 32
SHASTA LAKE
SPILLWAY
ELEV 1085

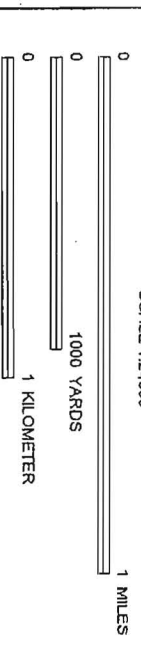
SHASTA NATIONAL FOREST
WHISKEYTOWN-SHASTA-TRINITY
NATIONAL RECREATION AREA

Backbone Road

SUGARPINE
33

RECREATION AREA B'DY
NATIONAL FOREST B'DY

SCALE 1:24,000



Fire Name	Latitude	Longitude	Sec., Town, & Range
1-1	41 00.560	121 31.237	NE 33, 37N, 4E
1-2	40 59.801	121 34.613	NW 12, 36N, 3E
1-3	40 57.785	121 32.930	SW S20, 36N, 4E
1-4	41 00.160	121 34. 919	NW S20, 36N, 3E
1-5	40 56.011	121 31.998	SW S33, 36N, 4E
1-6	40 52.481	121 33.815	NE S19, 35N, 4E
1-7			S6, 36N, 4E
1-8	41 03.095	121 33.523	SW S7, 37N, 4E
1-9	40 53.562	121 37.744	SW S15, 35N, 3E
1-10	40 57.300	121 47.700	NW S23, 36N, 1E
1-11	40 58.260	121 48.200	NE S24, 36N, 2E
1-12	40 59.100	121 48.220	SE S12, 36N, 1E
1-13	41 01.290	121 50.960	NW S34, 37N, 1E
1-14	41 03.990	121 52.620	
1-15	41 04.580	121 50.92	
1-16	41 07.320	121 51.700	SE S28, 38N, 2E
1-17	41 09.060	121 43.480	
1-18	41 06.490	121 42.890	
1-19	41 04.900	121 44.140	
1-20	41 20.12	121 40.013	
1-21	40 57.30	121 47.70	
1-22	41 03.99	121 52.62	
1-23	41 01.748	121 33.141	37N, 4E, S19
1-24			37N, 4E, S8
1-25			37N, 3E, S10
1-26	41 04.58	121 50.92	
1-27	41 07.32	121 51.70	
1-28	41 10.74	121 50.87	39N, 1E, S34
1-29	41 06.86	121 38.88	
1-30	41 01.095	121 34.197	NW 25, 37N, 3E
1-31			35N, 4E, S6
1-32			35N, 4E, S31
1-33			36N, 4E, S27
Back Bone	40 45.0640	122 07.8290	

SHU LIGHTNING
08/03/2009
CASHU 005594

UNIT LOG

2. DATE
PREPARED

3. TIME PREPARED

4. UNIT NAME / DESIGNATORS.

5. UNIT LEADER (NAME AND POSITION)

6. OPERATIONAL PERIOD

7. PERSONNEL ROSTER ASSIGNED

NAME	ICS POSITION	HOME BASE

8. ACTIVITY LOG (CONTINUE ON REVERSE)

TIME	MAJOR EVENTS

TIME

MAJOR EVENTS