

# SHASTA LIGHTNING

**CA SHU 005594**

August 8, 2009 0700-0700

## ***YOUR SAFE ACTIONS AFFECT EVERYONE'S SAFETY***

### **Personal Hygiene**

**Hand washing helps control germs**

### **Look up, look around**

**Snags, Aircraft, Powerlines, Rolling Material**

### **Personal Protective Equipment**

**Don it when you step out of your vehicle**

### **Complacency**

**Stay focused**

### **Hydration**

**Hotter and drier than last shift. Drink more  
water**

S  
A  
F  
E  
T  
Y

S  
A  
F  
E  
T  
Y

S  
A  
F  
E  
T  
Y

I  
T  
'  
S

U  
P

T  
O

Y  
O  
U  
!

<b>INCIDENT OBJECTIVES</b>	1. Incident Name <b>SHU Lightning Complex</b>	2. Date <b>08/07/09</b>	3. Time <b>1700</b>
4. Operational Period <b>August 8, 2009 0700 - 0700</b>			
<p>5. General Control Objectives for the Incident (include alternatives)</p> <p style="text-align: center;"><b>INCIDENT MANAGEMENT OBJECTIVES</b></p> <ul style="list-style-type: none"> <li>• <b>Provide for firefighter and public safety.</b></li> <li>• <b>Provide for initial attack within Eastern Shasta County.</b></li> <li>• <b>Keep costs commensurate with values at risk.</b></li> <li>• <b>Provide accurate and timely information to the public, media, and cooperating agencies.</b></li> <li>• <b>Communicate with cooperators regarding impacts from the fires to the surrounding communities and the assets at risk.</b></li> <li>• <b>Minimize fire suppression impacts to cultural resources, protected species, and riparian areas</b></li> </ul> <p style="text-align: center;"><b>INCIDENT CONTROL OBJECTIVES</b></p> <ul style="list-style-type: none"> <li>• <b>Incident Control Objectives are listed on the ICS 204s for each Branch</b></li> </ul>			
6. Weather Forecast for Period <b>SEE ATTACHED WEATHER FORECAST</b>			
7. General Safety Message <b>SEE ATTACHED SAFETY MESSAGE</b>			
8. Attachments (mark if attached)			
<input checked="" type="checkbox"/> Organization List - ICS 203 <input checked="" type="checkbox"/> Div. Assignment Lists - ICS 204 <input checked="" type="checkbox"/> Communications Plan - ICS 205	<input checked="" type="checkbox"/> Medical Plan - ICS 206 <input checked="" type="checkbox"/> Incident Map <input checked="" type="checkbox"/> Traffic Plan	<input checked="" type="checkbox"/> (Other) <b>WEATHER FORECAST</b> <input type="checkbox"/> <input type="checkbox"/>	
9. Prepared by (Planning Section Chief) <b>Phyllis Banducci</b>	10. Approved by (Incident Commander) <b>Doug Wenham</b>		

ORGANIZATION ASSIGNMENT LIST			9. Operations Section	
1. Incident Name	SHU Lightning Complex		Chief	B.Gouvea/E.Ullman
2. Date	8/8/2009	3. Time	2300	Deputy
4. Operational Period	8/9/2009	0700-0700	<b>G. Goose Branch</b>	
<b>5. Incident Commander and Staff</b>			Branch Director	M. Hebrard
Incident Commander	D. Wenham		Division D	D. McNamara
Deputy	J. Sisneros		Division E	A. Lambert
Safety Officer	L. Green - J. Mathias(T)		Division F	R. Gonzales
Information Officer	S. Lauderdale		Division N	M. Fields
Liaison Officer	J. Terpstra - S. Jones (T)		<b>b. Chalk Branch</b>	
<b>6. Agency Representative</b>			Branch Director	D. Quigley
Agency	Name		Division T	G. Quigley
Shasta Co Sheriff	D. Dean		Division V	D. Lindsey
Hat CreekLNF Rd	M. Price		Division W	T. Main
CDCR	Lt M. Ahlin		Division X	K. Twohey
CAL EMA	D. Tinnel		<b>c. Cassel Branch</b>	
BLM	J. Martinez		Branch Director	K. White - J. Ferguson(T)
			Division A	B. Mackwood - R. Withrow (T)
			Division C	J. Mclean
			Division Y	S. Schroth-Cary
			<b>d. Gomez Division</b>	
			Division	D. Ray
<b>7. Planning Section</b>			<b>e. Burney LCA</b>	
Chief	S. Griffis - P. Banducci (T)		Branch Director	J. Mobley
Deputy			Big Bend Group	B. Thomas
Resource Unit	R. Gladwin / G. Schultz		1-18 Group	D. Hawks
Situation Unit	J. Shelton - E. Hucks(T)		1-34 Group	D. Gaddy
Documentation Unit	G. Schultz		<b>f. Fire Supression Repair Group</b>	
Demobilization Unit	R. Wedel - D. Pucci (T)		Group	B. Beck
Human Resources				
Technical Specialists	(name / specialty)		<b>g. Branch</b>	
M. McKey / Training	K.DeSena/GISS		Branch Director	
J. Turner/FBAN	S. Estes/Motels		Division/Group	
J. Tonkin/IMET	H. Love/Crew Tech Spec		<b>h. Air Operations Branch</b>	
R.Carr/Hired Equipment	B. Beck FireSup Rep		Air Operatlons Branch Director	W. Giacomini - A. Lujan(T)
L. Pollack & S. Velasques/Arch			Air Support Supervisor	N.Truax / Wright
<b>8. Logistics Section</b>			Air Attack Supervisor	S. Brockman
Chief	D. Pedersen		Helicopter Coordinator	R. Yniguez
Deputy			Air Tanker Coordinator	
Service Branch Dir.			<b>10. Finance Section</b>	
Support Branch Dir.			Chief	W.Dornall
Supply Unit	M. Jarske - J. Walls (T)		Deputy	
Facilities Unit	E. Solis		Time Unit	T. Crespin
Ground Support Unit	S. Weir - C. Simmons		Procurement Unit	H. Keene
Communications Unit	T. Webb		Comp/Claims Unit	
Medical Unit	J. Vanatta		Cost Unit	S.Kavanaugh
Security Unit				
Food Unit	S. Ortiz			
			Prepared by (Resource Unit Leader)	
			R. Gladwin	



# CALFIRE INCIDENT COMMAND TEAM 1



<b>UNIT/ACTIVITY LOG</b> ICS 215A Rev. 06-09	<b>1. INCIDENT NAME:</b> SHASTA LIGHTNING COMPLEX	<b>2. DATE PREPARED:</b> August 7, 2009	<b>3. TIME PREPARED:</b> 1700 HR
---	--	--	-------------------------------------

<b>4. PREPARED BY:</b> HERB LOVE SOF1 (T)	<b>5. LEADER NAME:</b> LINDA GREEN, ISO TEAM 1	<b>6. OPERATIONAL PERIOD:</b> 8/8/2009 TO 8/9/2009	
--	---	---	--

## INCIDENT RISK ANALYSIS - WILDLAND FIRES

DIVISION	HAZARDOUS ACTIONS / CONDITIONS	MITIGATIONS / WARNINGS / REMEDIES
GOOSE CHALK	SNAG HAZARDS (Includes Utility Poles) DOWNHILL FIRE LINE FATIGUE DRIVING HAZARDS HYDRATION	Follow Hazard Tree Safety Guidelines (IRPG p. 80). Steep/rocky terrain: watch footing/maintain spacing. Crews working long hours with little relief & support. Drive defensively! Headlights on. Drinking water before, during and after shifts.
CASSEL	SNAG HAZARDS (Includes Utility Poles) FIRING OPERATIONS FATIGUE UNBURNED AREAS HYDRATION	Follow Hazard Tree Safety Guidelines (IRPG p. 80). Conduct thorough briefing for all personnel Crews working long hours with little relief & support. Do you know the fuels and their condition? Drinking water before, during and after shifts.
GOMEZ	SNAG HAZARDS (Includes Utility Poles) DRIVING HAZARDS FATIGUE HYDRATION UNBURNED AREAS	Follow Hazard Tree Safety Guidelines (IRPG p. 80). Drive defensively! Headlights on. Crews working long hours with little relief & support. Drinking water before, during and after shifts. Do you know the fuels and their condition?
BURNEY LCA	FIRE BEHAVIOR LINE CONSTRUCTION HYDRATION WEATHER HYDRATION	Base all actions on current/expected fire behavior. Ensure LCES in place. Drinking water before, during and after shifts. Ensure LCES in place. Drinking water before, during and after shifts.

--	--	--

--	--	--

--	--	--

--	--	--

# FIRE BEHAVIOR FORECAST

FORECAST NUMBER 05	TYPE OF FIRE SURFACE
FIRE NAME SHU LIGHTNING COMPLEX	OPERATIONAL PERIOD August 08, 2009
DATE ISSUED August 07, 2009	TIME ISSUED 2100
UNIT Shasta Ranger Unit	SIGNED <i>Jim Turner</i> <i>EJK</i> Jim Turner/Eric Kurtz

## WEATHER SUMMARY

SKY/WEATHER... CLEAR... EXCEPT FOR SMOKE.  
MAX TEMPERATURE... 89\* IN THE VALLEY TO 81\* ON THE SLOPES AND RIDGE TOPS  
MIN HUMIDITY 18% IN THE VALLEY TO 22% ON THE RIDGES WITH POOR TO MODERATE RECOVERY IN THE PM TO EARLY AM HOURS  
GEOGRAPHICAL TREND... WARMING AND DRYING, WINDS BECOMING WESTERLY IN THE AFTERNOON.  
LAL... 0  
CHANCE OF DRY LIGHTNING... 0%  
CHANCE OF WETTING RAIN... 0%

## FIRE BEHAVIOR INPUTS

FINE DEAD FUEL MOISTURE = 5 TO 8% DEPENDING ON FUEL SHADING  
1000 HR FUEL MOISTURE = 8% (KILN DRY LUMBER = 12%)  
PROBABILITY OF IGNITION = 45 TO 60%  
SPOTTING DISTANCE = 0.5 MILES FROM SINGLE TREE TORCHING MIDSLOPE.

NOTE POST LOOKOUTS TO RECORD AND ADVISE OPERATIONS OF CRITICAL FIRE WEATHER CHANGES.

## SPECIFIC

CREWS MAY EXPERIENCE SIGNIFICANT FIRE RUNS IN THE MID AFTERNOON STARTING AROUND 1300 HRS. ACTIVE FIRE MOVEMENT IS BY SLOPE AND WIND ALIGNMENT, WITH FIREBRANDS CASTING DOWNWIND AND ROLLOUTS ON STEEP SLOPES. THIS TYPE OF RUN MAY EXCEED 10 CHAINS PER HOUR IN THE BRUSH/TIMBER OVERSTORY AND 8 FOOT FLAME LENGTHS: MAXIMUM SPOTTING DISTANCES OF 0.5 MILES. RUNS IN TIMBER LITTER MAY RESULT IN RATE OF SPREAD (ROS) OF 6 CHAINS PER HOUR 2 TO 3 FOOT FLAME LENGTHS. DEAD & DOWNED FUELS ARE VERY RECEPTIVE FUEL BEDS FOR EMBERS. LIVE FUEL MOISTURES IN BRUSH ARE 84% (80% IS CRITICAL IN MANZANITA). BACKING FIRES BURNING ON THE LEEWARD SIDE OF THE SLOPE ARE BEING FUELED BY GROUND LITTER AND HAVE A SLOWER RATE OF SPREAD. STEEP TERRAIN AND ROLL-OUT PRESENT A HAZARD TO THE LINE. FINE DEAD FUEL MOISTURES WILL BE AT THE LOWEST FROM 1400-1800 HRS. RANGING BETWEEN 5-8%. AREAS OF DIRTY BURN EXIST THROUGHOUT ALL FIRES AND HAVE THE POTENTIAL FOR REBURN IF WINDS BEGIN TO SHIFT OR A NEW START OCCURS.

## AIR OPERATIONS

- BETTER VISIBILITY FROM TRANSPORT WINDS IN THE AFTERNOON HOURS.

## SAFETY

- CREWS NEED TO CONTINUE PAYING CLOSE ATTENTION FOR HIDDEN SPOT FIRES IN ALL FUEL BED TYPES
- WEAKENED SNAGS MAY FALL ACROSS CONTAINMENT LINES.
- STEEP TERRAIN AND UNDERSLUNG LINE MAY CAUSE ROLL-OUTS ACROSS CONTAINMENT LINES.
- DOWNED HEAVY FUELS MAY CONTAIN HIDDEN POCKETS OF BURNING MATERIAL.



## SHU Complex Incident Weather Forecast

**FORECAST NO:** 5  
**PREDICTION FOR:** Saturday Day Shift

**NAME OF FIRE:** SHU Complex  
**UNIT:** CA-SHU 5594

**SHIFT DATE:** Aug 8<sup>th</sup>, 2009  
**FORECAST ISSUED:** 1900 August 7<sup>th</sup>, 2009

**Incident Meteorologist:** Jeff Tonkin

---

**WEATHER DISCUSSION:** A ridge of high pressure will build over northern California leading to a warming and drying trend...and a more stable airmass through the weekend. Surface winds will be out of the west and southwest again while ridge top and smoke transport winds shift to the northwest.

---

### **WEATHER FORECAST SATURDAY DAY SHIFT:**

**WEATHER:** Clear...except for smoke.

**LIGHTNING ACTIVITY LEVEL:** 1      **CHANCE OF WETTING RAIN:** 0%

**TEMPERATURES:** 83 - 89 valleys/drainages...77 - 81 upper slopes/ridges.

**MIN HUMIDITY:** 18 - 23% valleys/drainages. 22 - 27% upper slopes/ridges.

**WINDS (20 FOOT):**

**RIDGETOP -** West 3 - 6 mph...gusts to 10 to 14 mph in the afternoon.  
Winds diminishing around sunset.

**LOWER ELEVATION/DRAINAGE -** West or Upslope/Upcanyon 3 - 7 mph...Gusts to 15 mph from 1300 to 1700 PDT.

**STABILITY / INVERSION:** Inversion breaking between 1200-1300 PDT...Lower level smoke moving east by 1400.

---

### **WEATHER FORECAST TONIGHT:**

**WEATHER:** Clear skies.

**MIN TEMPERATURES:** 43 - 48. 50 - 55 in thermal belt.

**MAX HUMIDITY:** 50 - 60%.

**WINDS (20 FOOT):**

**RIDGETOP -** West 3 to 6 mph until midnight...then becoming East or Northeast 2 to 4 mph through sunrise.

**VALLEY -** West 3 to 6 mph until 2200...then east or down-slope 2- 4 mph.

---

**OUTLOOK FOR SUNDAY:** Sunny and hot. Temps: 86 - 92. Min RH: 16-20%. Wind: West and Northwest 3 to 6 mph...gusts 10 to 12 mph in the afternoon.

---

**EXTENDED FORECAST FOR MONDAY THROUGH WEDNESDAY:** Near or slightly above normal temperatures and remaining dry. West wind...8 to 14 mph gusts to 20 mph in the afternoon. Max temps 83-89 valleys...76-83 ridges. Min RH 20% valley...20-25% ridge.

---

<b>DIVISION ASSIGNMENT LIST</b>			1. Branch <b>Goose</b>		2. Division/Group <b>D</b>		
3. Incident Name SHU Lightning Complex			4. Operational Period Date: 8/8/09 – 8/9/09      Time: 0700-0700				
5. Operations Personnel							
Operations Chief		Gouvea / Ullman (N)		Division/Group Supervisor		McNamara	
Branch Director		Hebrard		Air Attack Supervisor No.			
6. Resources Assigned this Period							
Strike Team/Task Force/ Resource Designator	Leader	Number Persons	Trans. Needed	Drop Off PT./Time	Pick Up PT./Time		
*SOFL	Bouska	1		DP 29	0700		
*SOFL	Hemstark	1		DP 29	0700		
SOFL	Young	1		DP 29	0700		
FELB	Campbell	1		DP 29	0700		
FALC	Holloway	1		DP 29	0700		
FALC	Shaulis	1		DP 29	0700		
FALC	Bolton	1		DP 29	0700		
FALC	Dunlap	1		DP 29	0700		
**FOBS	Frates	1		DP 29	0700		
**FOBS	Cash	1		DP 29	0700		
ST XNE 4101C	Good	19		DP 29	0700		
ST TGU 9255G	Wallen	33		DP 29	0700		
ST TGU 9259G	Boston	35		DP 29	0700		
WT WET VA E-245	Plank	2		DP 29	0700		
WT 49R E-266	Sasser	2		DP 29	0700		
WT 49R E-267	Nolan	2		DP 29	0700		
7. Control Operations Mop up. Keep fire North of Goose Mtn., East of Big Bend Rd., South of Pit River, West of Pit 3 Dam.							
8. Special Instructions *These safety officers are dedicated to PG&E falling group. ** FOBS are to be utilized branch wide.							
9. Division/Group Communication Summary							
Function	Frequency	System	Channel	Function	Frequency	System	Channel
Command	Rx 151.175W Tx 159.450W	King NIFC	CDF CMD 9 Tone 9	Logistics	159.4725	King NIFC	V Tac-14
Tactical Div/Group	166.725 N	King NIFC	NIFC Tac-5	Air to Ground	151.220	King NIFC	CDF A/G
Prepared by (Resource Unit Ldr.) Gabriel Schultz		Approved by (Planning Sect. Ch.) <i>Phyllis Brindley</i>		Date 8/7/09		Time 2000	





<b>DIVISION ASSIGNMENT LIST</b>			1. Branch <b>Goose</b>		2. Division/Group <b>F</b>		
3. Incident Name SHU Lightning Complex			4. Operational Period Date: 8/8/09 – 8/9/09      Time: 0700-0700				
5. Operations Personnel							
Operations Chief		Gouvea / Ullman (N)		Division/Group Supervisor		Gonzales	
Branch Director		Hebrard		Air Attack Supervisor No.			
6. Resources Assigned this Period							
Strike Team/Task Force/ Resource Designator	Leader	Number Persons	Trans. Needed	Drop Off PT./Time	Pick Up PT./Time		
ENG SHU 2465		4		DP 29	0700		
ENG SHU 2467	Wyckoff	4		DP 29	0700		
ENG SHU 2483	Trafton	4		DP 29	0700		
ENG SHU 2486	Troncale	4		DP 29	0700		
ENG BUF 517	Barber	3		DP 29	0700		
WT INTL E-55	Johnston	2		DP 29	0700		
WT Hedden E-270	Hedden	2		DP 29	0700		
WT BRDWLL E-310	Bridwell	2		DP 29	0700		
WT BEAR CNTRY E-311	Rollins	2		DP 29	0700		
WT BCNTY E-312	McClen	2		DP 29	0700		
WT RCHLTZ E-313	Rochlitz	2		DP 29	0700		
WT OILAR E-314	Oilar	2		DP 29	0700		
7. Control Operations Mop up and patrol. Keep fire North of Goose Mtn., East of Big Bend Rd., South of Pit River, West of Pit 3 Dam.							
8. Special Instructions							
9. Division/Group Communication Summary							
Function	Frequency	System	Channel	Function	Frequency	System	Channel
Command	Rx 151.175W Tx 159.450W	King NIFC	CDF CMD 9 Tone 9	Logistics	159.4725	King NIFC	V Tac-14
Tactical Div/Group	166.725 N	King NIFC	NIFC Tac-5	Air to Ground	151.220	King NIFC	CDF A/G
Prepared by (Resource Unit Ldr.) Gabriel Schultz		Approved by (Planning Sect. Ch.) <i>Phyllis Banducci</i>			Date 8/7/09		Time 2000

<b>DIVISION ASSIGNMENT LIST</b>				1. Branch <b>Goose (page 1)</b>		2. Division/Group <b>N</b>	
3. Incident Name SHU Lightning Complex				4. Operational Period Date: 8/8/09 – 8/9/09 Time: 0700-0700			
5. Operations Personnel							
Operations Chief		Gouvea / Ullman (N)		Division/Group Supervisor		Fields	
Branch Director		Hebrard		Air Attack Supervisor No.			
6. Resources Assigned this Period							
Strike Team/Task Force/ Resource Designator		Leader		Number Persons	Trans. Needed	Drop Off PT./Time	Pick Up PT./Time
SOFL		Brownell		1		DP 33	0700
SOFL		Lindgren		1		DP 33	0700
DOZB		Carter		1		DP 33	0700
DOZB		Wolford		1		DP 33	0700
FELB		Markley		1		DP 33	0700
FALC		Hodgson		1		DP 33	0700
FALC		Anderson		1		DP 33	0700
FOBS		McDaniel		1		DP 33	0700
FOBS		Hill		1		DP 33	0700
ST SBC 9322C		Joyner		19		DP 33	0700
ST TUU 9411C		Machado		21		DP 33	0700
ST MMU 9421C		Anderson		21		DP 33	0700
ST HUU 9127G		Davis		32		DP 33	0700
ST LNU 9143G		Layton		29		DP 33	0700
ST SLU 9395G		Elmore		26		DP 33	0700
DOZ HUU 1242		Gardner		2		DP 33	0700
DOZ LNU 1448		Pridmore		2		DP 33	0700
7. Control Operations Improve and hold line. Look for new spots. Keep fire North of Goose Mtn., East of Big Bend Rd., South of Pit River, West of Pit 3 Dam.							
8. Special Instructions							
9. Division/Group Communication Summary							
Function	Frequency	System	Channel	Function	Frequency	System	Channel
Command	Rx 151.175W Tx 159.450W	King NIFC	CDF CMD 9 Tone 9	Logistics	159.4725	King NIFC	V Tac-14
Tactical Div/Group	166.725 N	King NIFC	NIFC Tac-5	Air to Ground	151.220	King NIFC	CDF A/G
Prepared by (Resource Unit Ldr.) Gabriel Schultz			Approved by (Planning Sect. Ch.) <i>Phyllis Banducci</i>		Date 8/7/09		Time 2000



DIVISION ASSIGNMENT LIST		1. Branch <b>Chalk</b>		2. Division/Group <b>T (Page 1)</b>			
3. Incident Name SHU Lightning Complex		4. Operational Period Date: 8/8/09-8/9/09 Time: 0700-0700					
5. Operations Personnel							
Operations Chief	Gouvea / Ullman (N)	Division/Group Supervisor		G. Quigley			
Branch Director	D. Quigley	Air Attack Supervisor No.					
6. Resources Assigned this Period							
Strike Team/Task Force/ Resource Designator	Leader	Number Persons	Trans. Needed	Drop Off PT./Time	Pick Up PT./Time		
SOFL	McMillen	1		Big Bend Fire Station	0800		
SOFL	Stangeland	1		Big Bend Fire Station	0800		
DOZB	Trammell	1		Big Bend Fire Station	0800		
DOZB (T)	Danielson	1		Big Bend Fire Station	0800		
FELB	McGregor	1		Big Bend Fire Station	0800		
FELB	Kramer	1		Big Bend Fire Station	0800		
FALC	Loerzel	1		Big Bend Fire Station	0800		
FALC	Southard	1		Big Bend Fire Station	0800		
FALC	Russell	1		Big Bend Fire Station	0800		
FALC	Madsen	1		Big Bend Fire Station	0800		
FALC	Seaborn	1		Big Bend Fire Station	0800		
FALC	Stahl	1		Big Bend Fire Station	0800		
FALC	Vaughn	1		Big Bend Fire Station	0800		
*FOBS	Hill	1		Big Bend Fire Station	0800		
*FOBS (T)	Opie	1		Big Bend Fire Station	0800		
FOBS	Sciocchetti	1		Big Bend Fire Station	0800		
FOBS (T)	Wilson	1		Big Bend Fire Station	0800		
ST HUU 9122 G	Scarlett	33		Big Bend Fire Station	0800		
ST HUU 9126 G	Rudesill	33		Big Bend Fire Station	0800		
**CRW Diamond Mtn HS	Varney	19		Big Bend Fire Station	0800		
7. Control Operations * Available for Chalk Branch. **Fly into Chalk Helispot @ 40 59.876 121 49.183 Finish Line and Improve. Keep fire North of River Road, South of 37N30 Rd., East of Swift Creek, and West of Pit #4 Dam.							
8. Special Instructions Beware of spotting and post lookouts.							
9. Division/Group Communication Summary							
Function	Frequency	System	Channel	Function	Frequency	System	Channel
Command	Rx 151.175W Tx 159.450W	King NIFC	CDF CMD 9 Tone 9	Logistics	159.4725	King NIFC	V Tac-14
Tactical Div/Group	154.265 W	King NIFC	White Fire -2	Air to Ground	151.220	King NIFC	CDF A/G
Prepared by (Resource Unit Ldr.) Gabriel Schultz		Approved by (Planning Sect. Ch.) <i>Phyllis Barducci</i>			Date 8/7/09		Time 2300





<b>DIVISION ASSIGNMENT LIST</b>		1. Branch <b>Chalk</b>	2. Division/Group <b>W</b>				
3. Incident Name SHU Lightning Complex		4. Operational Period Date: 8/8/09-8/9/09 Time: 0700-0700					
5. Operations Personnel							
Operations Chief	Gouvea / Ullman (N)	Division/Group Supervisor		Main			
Branch Director	D. Quigley	Air Attack Supervisor No.					
6. Resources Assigned this Period							
Strike Team/Task Force/ Resource Designator	Leader	Number Persons	Trans. Needed	Drop Off PT./Time	Pick Up PT./Time		
SOFL	Piccinini	1		Big Bend Fire Station	0800		
FALC	Seaborn	1		Big Bend Fire Station	0800		
FALC	Edwards	1		Big Bend Fire Station	0800		
FOBS	Bernheisel	1		Big Bend Fire Station	0800		
FOBS (T)	Cowles	1		Big Bend Fire Station	0800		
ST XSA 4154 C	Wothington	22		Big Bend Fire Station	0800		
ST TGU 9250 C	Johnson	16		Big Bend Fire Station	0800		
ST BDU 9389 G	Volmer	37		Big Bend Fire Station	0800		
DOZ Oilar E-32		2		Big Bend Fire Station	0800		
DOZ Oilar E-33	Heart	2		Big Bend Fire Station	0800		
WT Northstate E-116	Bowman	2		Big Bend Fire Station	0800		
WT Timberline E-221	Mayer	2		Big Bend Fire Station	0800		
WT 570 Big Bend E-301	Green	2		Big Bend Fire Station	0800		
7. Control Operations							
Mop-up 100 feet in.							
Keep fire North of River Road, South of 37N30 Rd., East of Swift Creek, and West of Pit #4 Dam.							
8. Special Instructions							
Beware of spotting and post lookouts.							
9. Division/Group Communication Summary							
Function	Frequency	System	Channel	Function	Frequency	System	Channel
Command	Rx 151.175W Tx 159.450W	King NIFC	CDF CMD 9 Tone 9	Logistics	159.4725	King NIFC	V Tac-14
Tactical Div/Group	158.7375	King NIFC	V Tac-13	Air to Ground	151.220	King NIFC	CDF A/G
Prepared by (Resource Unit Ldr.) Gabriel Schultz		Approved by (Planning Sect. Ch.) <i>Phyllis Banducci</i>		Date 8/7/09		Time 2300	

<b>DIVISION ASSIGNMENT LIST</b>		1. Branch <b>Chalk</b>	2. Division/Group <b>X</b>				
3. Incident Name SHU Lightning Complex		4. Operational Period Date: 8/8/09-8/9/09 Time: 0700-0700					
5. Operations Personnel							
Operations Chief	Gouvea / Ullman (N)	Division/Group Supervisor		Twohey / Purvis (T)			
Branch Director	D. Quigley	Air Attack Supervisor No.					
6. Resources Assigned this Period							
Strike Team/Task Force/ Resource Designator	Leader	Number Persons	Trans. Needed	Drop Off PT./Time	Pick Up PT./Time		
ST XSJ 4175 C	Siefert	17		Big Bend Fire Station	0800		
ENG SHU 2460	Martin	4		Big Bend Fire Station	0800		
ENG SHU 2466	Ciapponi	4		Big Bend Fire Station	0800		
ST TUU 9473 G	Delashmutt	33		Big Bend Fire Station	0800		
CRW Sugar Pine 5		16		Big Bend Fire Station	0800		
WT Carlton E-39		2		Big Bend Fire Station	0800		
WT Zabel E-52	Zabel	2		Big Bend Fire Station	0800		
7. Control Operations Mop-up 100 feet in.  Keep fire North of River Road, South of 37N30 Rd., East of Swift Creek, and West of Pit #4 Dam.							
8. Special Instructions Beware of spotting and post lookouts.							
9. Division/Group Communication Summary							
Function	Frequency	System	Channel	Function	Frequency	System	Channel
Command	Rx 151.175W Tx 159.450W	King NIFC	CDF CMD 9 Tone 9	Logistics	159.4725	King NIFC	V Tac-14
Tactical Div/Group	154.295 W	King NIFC	White Fire-3	Air to Ground	151.220	King NIFC	CDF A/G
Prepared by (Resource Unit Ldr.) Gabriel Schultz		Approved by (Planning Sect. Ch.) <i>Phyllis Banducci</i>		Date 8/7/09		Time 2300	















<b>DIVISION ASSIGNMENT LIST</b>			1. Branch <b>Burney LCA</b>		2. Division/Group Group 1-34		
3. Incident Name SHU Lightning Complex			4. Operational Period <b>12 hour operational period</b> Date: 8/8/09 Time: 0700-1900				
5. Operations Personnel							
Operations Chief		Gouvea / Ullman (N)		Division/Group Supervisor		Gaddy	
Branch Director		Mobley		Air Attack Supervisor No.			
6. Resources Assigned this Period							
Strike Team/Task Force/ Resource Designator	Leader		Number Persons	Trans. Needed	Drop Off PT./Time		Pick Up PT./Time
SOFL	Demattei		1		Burney Station 14		0700
TECH SPEC	Hollister		1		Burney Station 14		0700
TECH SPEC	Karlowsky		1		Burney Station 14		0700
ENG SHU 2451	Barber		4		Burney Station 14		0700
ENG SHU 2478	Hill		4		Burney Station 14		0700
ENG SHU 2485	Camillieri		4		Burney Station 14		0700
ENG SHS 513 E-14	Coe		2		Burney Station 14		0700
WT MHS 4630 E-228	Haistings		2		Burney Station 14		0700
WT ALL AGENCY E-268	Hill		2		Burney Station 14		0700
7. Control Operations Mop-up and patrol known fires Identify and suppress new fires							
8. Special Instructions Maintain 3 minute response for initial attack.							
9. Division/Group Communication Summary							
Function	Frequency	System	Channel	Function	Frequency	System	Channel
Command	Rx 151.175W Tx 159.450W	King NIFC	CDF CMD 9 Tone 9	Logistics	159.4725	King NIFC	V Tac-14
Tactical Div/Group	166.775 N	King NIFC	NIFC Tac-6	Air to Ground	151.220	King NIFC	CDF A/G
Prepared by (Resource Unit Ldr.) Gabriel Schultz			Approved by (Planning Sect. Ch.) <i>Phyllis Banducci</i>		Date 8/7/09		Time 2300

<b>DIVISION ASSIGNMENT LIST</b>			1. Branch		2. Division/Group <b>Fire Suppression Repair Group</b>		
3. Incident Name SHU Lightning Complex			4. Operational Period Date: 8/8/09 – 8/9/09 Time: 0700-0700				
5. Operations Personnel							
Operations Chief		Gouvea / Ullman (N)		Division/Group Supervisor		Beck	
Branch Director				Air Attack Supervisor No.			
6. Resources Assigned this Period							
Strike Team/Task Force/ Resource Designator	Leader		Number Persons	Trans. Needed	Drop Off PT./Time		Pick Up PT./Time
Rehab Spec	Wyman		1		Goose/Chalk		0700
Rehab Spec	Kendrick		1		CasselGomez		0700
							0700
BLM Resource Advisor	Kosic		1		Cassel		0700
BLM Resource Advisor	Johnson		1		Cassel		0700
BLM Resource Advisor	Cann		1		Cassel		0700
							0700
FOBS	Green		1		Chalk		0700
FOBS	McBride		1		Chalk		0700
FOBS	Sweeden		1		Goose		0700
FOBS	Harvey		1		Goose		0700
DOZ Hagen E-59	Hagen		2		Black Ranch Rd. Staging		0800
DOZ Hagen E-60	Poe		2		Black Ranch Rd. Staging		0800
DOZ Carlton E-22	Carlton		2		Black Ranch Rd. Staging		0800
DOZ Caldwell E-285	Caldwell/Spoon		2		Black Ranch Rd. Staging		0800
DOZ Strieff E-58			2		Black Ranch Rd. Staging		0800
WT B&G E-188	Brock/Jarrett		2		Black Ranch Rd. Staging		0800
WT Stottsberry E-269	Stottsberry		2		Black Ranch Rd. Staging		0800
WT Hoaglan E-241	Hoaglan		2		Black Ranch Rd. Staging		0800
7. Control Operations Assess fire suppression repair needs. Water bar fire lines. Water roads as needed.							
8. Special Instructions							
9. Division/Group Communication Summary							
Function	Frequency	System	Channel	Function	Frequency	System	Channel
Command	Rx 151.175W Tx 159.450W	King NIFC	CDF CMD 9 Tone 9	Logistics	159.4725	King NIFC	V Tac-14
Tactical Div/Group		King NIFC		Air to Ground	151.220	King NIFC	CDF A/G
Prepared by (Resource Unit Ldr.) Gabriel Schultz		Approved by (Planning Sect. Ch.) <i>Phyllis Banducci</i>			Date 8/7/09		Time 2000



## Immediate Need Firing Operation Checklist

Location: \_\_\_\_\_

Date: \_\_\_\_\_

Time: \_\_\_\_\_

Firing Supervisor \_\_\_\_\_

### 1. Personnel Briefing

- Objectives
- Conditions (weather, fuel, burn window)
- Resource assignments
  - firing personnel
  - holding forces
  - lookouts
- Ignition plan/sequence
- Communication Plan
- Contingency Plan
- Safety issues

### 2. GO / NO-GO

- |  |  |
|--|--|
| <input type="checkbox"/> All personnel briefed                           | <input type="checkbox"/> Communications systems in place                           |
| <input type="checkbox"/> Weather forecast reviewed                       | <input type="checkbox"/> Fire behavior forecast reviewed                           |
| <input type="checkbox"/> Resources in place                              | <input type="checkbox"/> Escape routes and safety zones established and made known |
| <input type="checkbox"/> Lookouts posted as needed                       | <input type="checkbox"/> Adjoining forces/Air Attack notified                      |
| <input type="checkbox"/> Anchor and termination firing points identified |  |

### 3. APPROVAL PRIOR TO FIRING

### 4. NOTIFICATION PRIOR TO FIRING

# AIR OPERATIONS SUMMARY

OPERATIONAL PERIOD DATE: DAY SHIFT DATE: 08/08/09

START: 0800 END: 1949

(Expanded Form for Large Operations)

1. INCIDENT NAME: <b>Shasta Lightning Complex</b>	2. PREPARED BY: A.Lujan	PREPARED DATE/TIME: 08/07/09 1900
---	-------------------------	-----------------------------------

**4. REMARKS (Safety Notes, Hazards, Air Operations Special Equipment., etc.):**

All GPS data to be collected (degrees, minutes & decimal minutes)

**\*\*Avoid** aerial application of retardant or foam within 300' of waterways, bodies of water. If retardant is dropped within these areas, notify

AOBD with Lat & Long, est. of gallons, and a map.

TRACK RETARDANT DROP LOCATIONS

SUNRISE: 0616

SUNSET : 2020

**5. TFR:**

1. Notam9/2416

2. Notam 9/3026

6. PERSONNEL	Phone	7. REQUENCIES	AM	FM	8. FIXED-WING # Avail / Type/ Make-Model / FAA N# / Base(s)
AOBD: Alex Lujan AOBD: Warren Giacomini	530-598-2645 707-391-6784	AIR/AIR FW:	128.250	170.4625	Air Tactical AA-240 AA-500
ATGS: Scott Brockman ATGS: Crystal Henson	530-226-2695	AIR/AIR RW:	S 127.025 N 128.675		
HLCO: Rudy Yniguez HLCO: Scott Upton	530-448-2450 707-889-4373	AIR/GROUND:		151.220	Lead planes
ASGS: Nick Truax	530-448-2411	DECK:	163.100		Airtankers 3 Type 1 5 Type 3
HEBM. Randy Fergosa Scott Corn	530-200-3263 530-227-4887	COMMAND RPT	Command 9 Tone 9		
		Air Guard	168.625		
		TOLC	122.80		Other :

**9. HELICOPTERS (Use Additional Sheets As Necessary)**

FAA N#	TY	MAKE/MODE	BASE	AVAIL	START	REMARKS	FAA N#	TY	MAKE/MODE	BASE	AVAIL	START	REMARKS
1HM	3	206 L4	FR	0830		HELCO	8GH	3	206 B3	FR	0830		HELCO
FY	1	BV 107	FR	0830			801	1	Chinook	RDD	0900		Guard
784	1	S 61	FR	0830			802	1	Chinook	RDD	0900		Guard
96W	1	S 61	FR	0830			840	1	Blackhawk	RDD	0900		Guard
205	2	UH1H	FR	0830			831	1	Blackhawk	RDD	0900		Guard
207	2	UH1H	FR	0830		Standard	217	2	214	FR	0830		
8HM	2	UH1B	FR	0830			6TV	2	UH1H	FR	0830		
							1GH	2	UH1H	FR	0830		
726	3	206 B3	FR	0830		Relief Helco							
3SH	3	206 B3	FR	0830		Recon / Mapping							
C 101	2	205	FR	0830		Medavac/ Short Haul							

INCIDENT RADIO COMMUNICATIONS PLAN			Shasta Lightning Incident			Date/Time Prepared 8/7/2009 - 20:00:00 AM			Operational Period Date/Time 8/8/2009/0700-0700	
Ch #	Function	Channel Name/Trunked Radio System Talkgroup	Assignment	RX Freq N or W	RX Tone/NAC	TX Freq N or W	Tx Tone/NAC	Mode A, D or M	Remarks	
1	Command	CDF Command-1	Not assigned	151.355 W		159.300 W	156.7 (6)	A	Not assigned	
2	Command	CDF Command-9	Command	151.175 W		159.450 W	100.0 (9)	A	Grp 3 Ch.9	
3	Command	NIFC Cmnd-22		165.450 N		172.5125 N	156.7 (6)	A	Not assigned	
4	Tactical	V-Tac 11	Back Bone Branch	151.1375 N		151.1375 N	156.7	A	Grp 3 Ch.146	
5	Tactical	V-Tac 13	Chalk Div.W	158.7375 N		158.7375 N	156.7	A	Grp 3 Ch.148	
6	Tactical	NIFC Tac-5	Goose Branch	166.725 N		166.725 N		A	Grp 3 Ch.103	
7	Tactical	NIFC Tac-6	Burney LCA	166.775 N		166.775 N		A	Grp 3 Ch.104	
8	Tactical	NIFC Tac-7	Gomez Branch	168.250 N		168.250 N		A	Grp 3 Ch.105	
9	Tactical	USFS R-5 T-4	Cassel Branch	173.9125 N		173.9125 N		A	Grp 3 Ch.106	
10	Tactical	USFS R-5 T-5	Cassel Branch	173.9625 N		173.9625 N		A	Grp 3 Ch.107	
11	Tactical	USFS R-5 T-6	Chalk Div. V	173.9875 N		173.9875 N		A	Grp 3 Ch.108	
12	Tactical	White Fire-2	Chalk Div. T	154.265 W		154.265 W		A	Grp 3 Ch.151	
13	Tactical	White Fire-3	Chalk Div. X	154.295 W		154.295 W		A	Grp 3 Ch.152	
14	Tactical	NIFC Tac-1	Not assigned	168.050 N		168.050 N		A	Grp 3 Ch.99	
15	Tactical	NIFC Tac-3	Not assigned	168.600 N		168.600 N		A	Grp 3 Ch.101	
16	Tactical	V-Tac-12	Not assigned	154.4525 N		154.4525 N	156.7	A	Grp 3 Ch.147	
17	Tactical	CDF-A/G	Air to Ground	151.2200 N		151.2200 N		A	Air to Ground Grp3Ch126	
18	Camp/Logistics	V-Tac-14	Logistics	159.4725 N		159.4725 N		A	Base Camp UseGrp3Ch4149	
19	Medical	CALCORD	Medical	156.075 W		156.075 W		A	Medical Emerg. Grp3Ch.144	
20	Emergency	Air Guard	Emergency	168.625 N		168.625 N	110.9	A	Emerg. Air ContactGrp3Ch138	
Prepared By (Communications Unit) Tom Webb COML CALFIRE Team 1					Incident Location County State Latitude N Longitude W					

The convention calls for frequency lists to show four digits after the decimal place, followed by either an "N" or a "W", depending on whether the frequency is narrow or wide band. Mode refers to either "A" or "D" indicating analog or digital (e.g. Project 25) or "M" indicating mixed mode. All channels are shown as if programmed in a control station, mobile or portable radio. Repeater and base stations must be programmed with the Rx and Tx reversed.

<b>MEDICAL PLAN</b>	1. INCIDENT NAME	2. DATE PREPARED	3. TIME PREPARED	4. OPERATIONAL PERIOD
	SHU Lightning	8/7/2009	1530	8/08/09-8/09/09 0700-0700

**5. INCIDENT MEDICAL AID STATION**

MEDICAL AID STATIONS	LOCATION	PARAMEDICS	
		YES	NO
Incident Base Mert	27571 Mountain View Rd., Burney, CA (Burney High School)	<input checked="" type="checkbox"/>	<input type="checkbox"/>
CAL FIRE Personnel	On engines and at CAL FIRE stations.	<input type="checkbox"/>	<input checked="" type="checkbox"/>
DMAT	Incident Base	<input checked="" type="checkbox"/>	<input type="checkbox"/>
		<input type="checkbox"/>	<input type="checkbox"/>
		<input type="checkbox"/>	<input type="checkbox"/>

**6. TRANSPORTATION**

**A. AMBULANCE SERVICES**

NAME	ADDRESS	PHONE	PARAMEDICS	
			YES	NO
Redding ECC	Contact Redding ECC for all air or ground transport	530-225-2411	<input checked="" type="checkbox"/>	<input type="checkbox"/>
Burney Ambulance	Burney, CA (contact SHU ECC)	530-225-2411	<input checked="" type="checkbox"/>	<input type="checkbox"/>
Mayers Memorial Hospital	43563 HWY 299. Mc Arthur, CA	530-336-5511	<input checked="" type="checkbox"/>	<input type="checkbox"/>
			<input type="checkbox"/>	<input type="checkbox"/>
			<input type="checkbox"/>	<input type="checkbox"/>

**B. INCIDENT AMBULANCES**

NAME	LOCATION	PARAMEDICS	
		YES	NO
	N/A	<input type="checkbox"/>	<input type="checkbox"/>
		<input type="checkbox"/>	<input type="checkbox"/>
		<input type="checkbox"/>	<input type="checkbox"/>
		<input type="checkbox"/>	<input type="checkbox"/>

**7. HOSPITALS**

NAME	ADDRESS	TRAVEL TIME		PHONE	HELIPAD		BURN CENTER	
		AIR	GRND		YES	NO	YES	NO
Mercy Medical Center	2175 Rosaline Ave Redding CA 96001	15-30min	1-2 hours	530-225-6000	X	<input type="checkbox"/>	<input type="checkbox"/>	X
Shasta Regional Hospital	1100 Butte St., Redding, CA	15-30min	1-2 hours	530-244-5353	X	<input type="checkbox"/>	<input type="checkbox"/>	X
UC Davis	2315 Stockton Blvd., Sacramento, CA	1.5 hours	2.5-3 hours	(916) 734-2130	X	<input type="checkbox"/>	X	
Mayers Memorial	43563 HWY 299. Mc Arthur, CA	15-30min	.5 - 1.5 hours	530-336-5511	X	<input type="checkbox"/>	<input type="checkbox"/>	X
		<input type="checkbox"/>	<input type="checkbox"/>		<input type="checkbox"/>	<input type="checkbox"/>	<input type="checkbox"/>	<input type="checkbox"/>

**8. MEDICAL EMERGENCY PROCEDURES**

Immediately report all injuries to your immediate supervisor.  
 Any injury requiring greater care than first aid needs to be reported to your Division/Group Supervisor on Command net  
 Supervisors be prepared to request needs including:  
 -Air or Ground Transportation  
 -Location to meet injured person / any special routing / GPS coordinates if available  
 -Type of injury  
 Division/Groups will coordinate transportation or additional needs  
 Notify Safety Officer for all significant injuries  
 More significant events (ie major injuries or deaths, burn over, missing persons) require immediate IC & PIO notification  
 All Air Ambulance LZ coordination will be conducted on CalCord  
 Any Short Haul procedure will be with Copter 101 coordinated through your Division/Group Supervisor

9. PREPARED BY (MEDICAL UNIT LEADER)  Med Unit Leader Jeff Vanatta	10. REVIEWED BY (SAFETY OFFICER)  Herb Love
--	---

## **Finance Message**

- 1. Offsite feeding is authorized for those personnel lodging in Redding only. Only the dinner meal is authorized. Breakfast will be eaten at Incident Base. There is no offsite feeding authorized in Burney or Fall River.**
- 2. Please watch for and report any incident related damage that we have caused to private property.**
- 3. Shift Tickets and vendor evaluations are to be completed by Division Supervisors for each shift and turned in daily.**
- 4. Be sure that your timekeeping documentation is started with the Time Unit.**

# Contractor/Vendor Performance Evaluation

ICS 230

Incident Name	Order Number	Request Number	Start Date	End Date	
			To		
Shift/Operational Period		Operator	Assignment or Location		

Vendor Name	Vendor Address	Phone and Contact
-------------	----------------	-------------------

Service  Commodity  Rental Equipment  Agreement # \_\_\_\_\_

Brief description of services/commodity/equipment ordered:

Rating Factors	YES	NO
1) Gave and Met acceptable ETA/commitment.	<input type="checkbox"/>	<input type="checkbox"/>
2) Arrived prepared, equipped and ready to work.	<input type="checkbox"/>	<input type="checkbox"/>
3) Met with assigned supervisor for direction.	<input type="checkbox"/>	<input type="checkbox"/>
4) Met performance expectations.	<input type="checkbox"/>	<input type="checkbox"/>
5) Equipment in safe working condition.	<input type="checkbox"/>	<input type="checkbox"/>
6) Personnel were skilled and operated safely.	<input type="checkbox"/>	<input type="checkbox"/>
7) Personnel's level of cooperation was acceptable.	<input type="checkbox"/>	<input type="checkbox"/>
8) Other:	<input type="checkbox"/>	<input type="checkbox"/>
Overall rating of performance	Poor* <input type="checkbox"/> Avg <input type="checkbox"/> Good <input type="checkbox"/> Exc. <input type="checkbox"/>	
Recommendation for Rehire/Reuse:	YES <input type="checkbox"/>	NO <input type="checkbox"/> **

\* Any rating of poor requires explanation or comment.  
 \*\* Recommendation of No Reuse requires comment and Logistics Chief concurrence.

Comments: \_\_\_\_\_

\_\_\_\_\_

\_\_\_\_\_

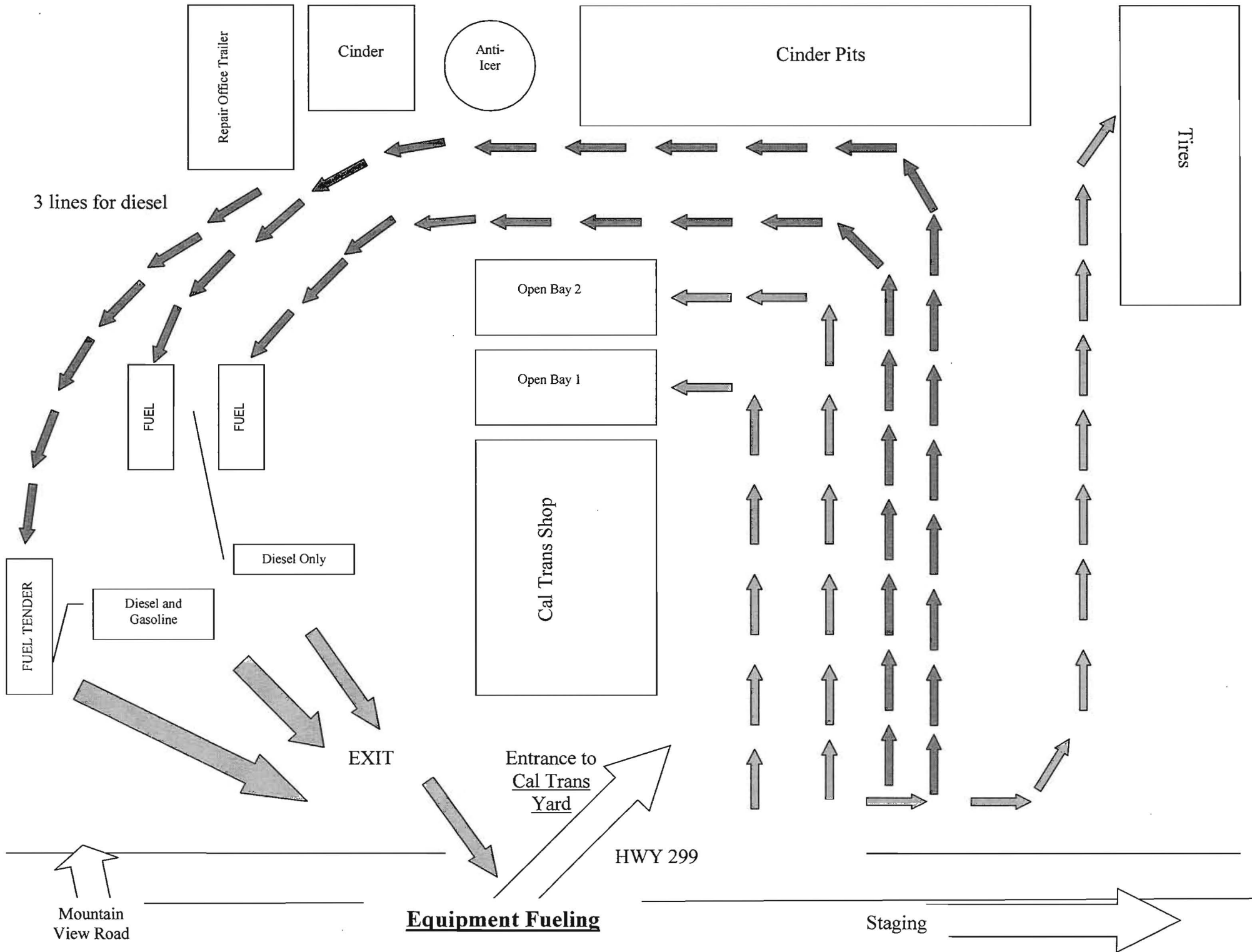
\_\_\_\_\_

Signature below does not constitute agreement with rating, but that rating was discussed with me.

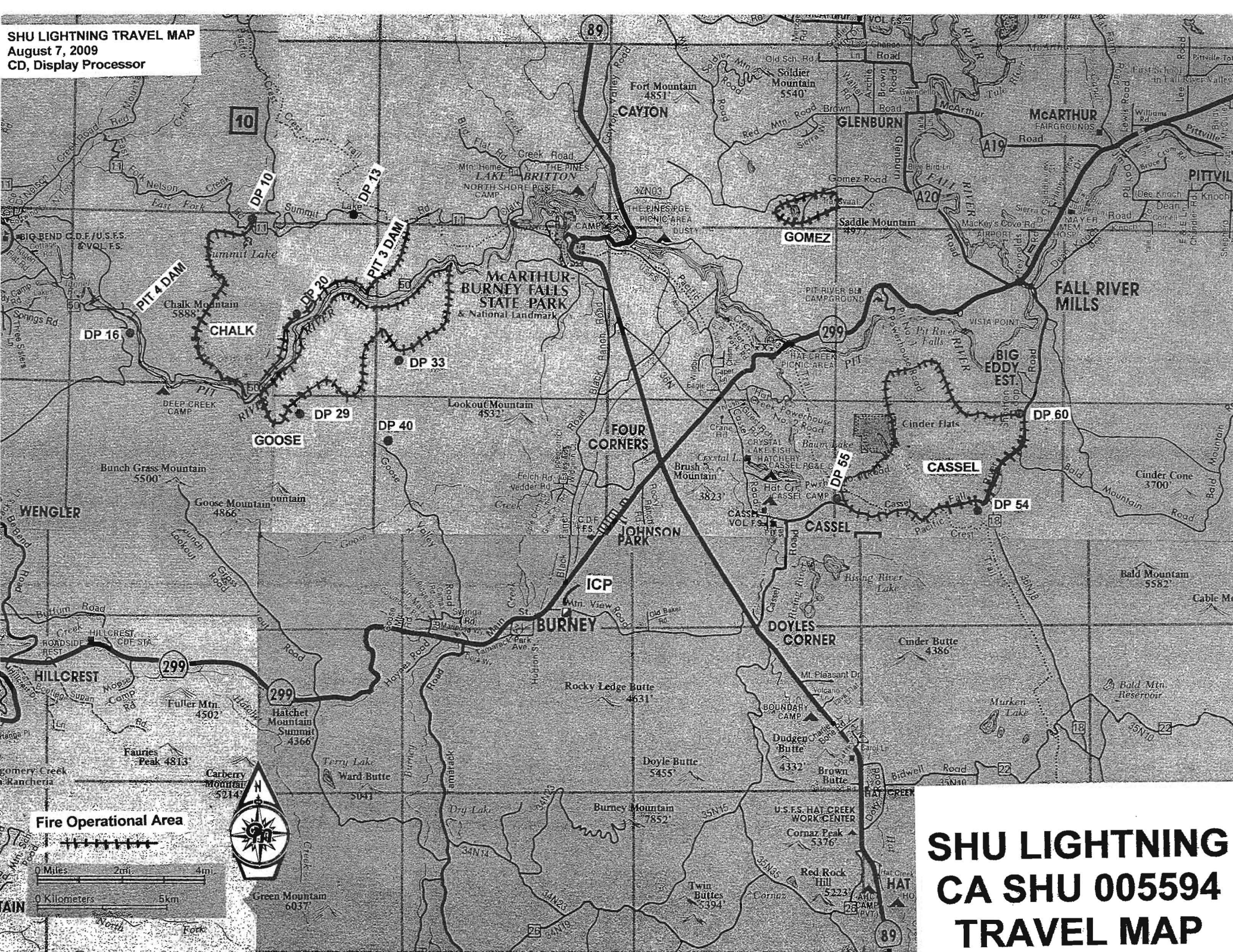
Vendor Representative Name/Title	Government Rep. Name/Position
Signature	Date
Signature	Date

Note: Equipment safety/compliance inspections still required, please document separately.  
 Distribution: Blue; Original-Incident Packet      Canary; Copy-Contractor/Vendor      Pink; Copy-Admin Unit









**SHU LIGHTNING  
CA SHU 005594  
TRAVEL MAP**

# **TRAINEES**

*SEE THE TRAINING SPECIALIST*

*(LOCATED IN PLANS - NEXT TO CHECK-IN)*

**START THE PROCESS OR UPDATE THE PROGRESS.**

**STOP BY PERIODICALLY SO I CAN TRACK YOUR TASK  
BOOK**



*MARK MCKEY*  
TRAINING SPECIALIST  
ICT 1

## **Archaeological Guidelines for the Shasta Lightning Complex Shasta County, CA**

1. Sites known by the archaeologist will be marked with red plastic flagging tape.
2. Be on the lookout for unmarked prehistoric archaeological sites. These sites may include village sites that include dark midden soils and circular housepit depressions; seasonal camps marked by the presence of shiny black obsidian flakes and/or white-colored freshwater mussel shells; and hunting camps containing obsidian and basalt flakes.
3. Be on the lookout for unmarked historic archaeological sites. These sites may include old cabins and homesteads now marked by the presence of foundations, wells, and can dumps. Also present is early infrastructure related to the PG&E hydro-electric system.
4. Look for these unmarked prehistoric and historic sites in flat areas, especially adjacent to the Pit River, streams, and springs.
5. Avoid ground disturbing activities within archaeological sites where possible. If you can't avoid, minimize ground disturbance as much as possible, only clearing the surface to as minimal a depth as necessary. Try to go around sites with dozers rather than through them. Flag the site for continued avoidance during Fire Suppression Repair activities.
6. If you find artifacts leave them in place. Some artifacts may have been intentionally placed for religious or ceremonial reasons.
7. If possible, note locations of discovered artifacts, features, and/or sites on a map. Better yet take a GPS reading. Leave information for the archaeologist with the Plans Unit.
8. **While protection of non-renewable cultural resources is important, firefighter safety is even more important. Protect archaeological sites where you can but do not jeopardize firefighter safety or risk losing control of the incident when site protection is considered.**

Thanks for your help protecting California's cultural heritage.

Richard Jenkins  
CAL FIRE Northern Region Archaeologist  
Redding

# Fire Suppression Repair Checklist

## CA-SHU-005594

Fire Name \_\_\_\_\_ Form Preparer \_\_\_\_\_

Division \_\_\_\_\_ Date Prepared \_\_\_\_\_

**Work Needed**

**Location**  
**(T./R./S.)**

Fence/Gate Repair \_\_\_\_\_

Waterbars \_\_\_\_\_

Road Repair \_\_\_\_\_

Watercourse Cleanout \_\_\_\_\_

Culvert Cleanout and Repair \_\_\_\_\_

Seeding/Mulching Watercourse Crossing \_\_\_\_\_

Trash Pickup \_\_\_\_\_

Other \_\_\_\_\_

NOTE: List type of material/equipment/personnel needed (e.g., fencing materials, tools, dozer, backhoe, stakeside, handcrew, etc.)

---

---

---

---

# REHABILITATION

It is time to begin planning for the fire suppression repair efforts. A fire suppression repair plan will be developed for each of the fires within the SHU Lightning Complex. To accomplish our goals we need to identify problem areas, prescribe the needed work, and ensure that the work is completed.

In an effort to identify problem areas we have created the attached form for use by the Branches and Divisions. As noted on the form, items to consider include: fences and gates damaged during the incident; road and watercourse crossings repairs; culverts and watercourses needing cleanout; fire breaks in need of waterbarring; trash and equipment pickup.

Use the attached form(s) to document locations where repair work may be necessary. Use maps to show locations. Return forms to the Suppression Repair Unit at the end of your shift.

**DEMOBILIZATION PLAN - summarized**  
**SHU Lightning INCIDENT**

**I. RELEASE PRIORITIES**

The following Release Priorities have been established by the Incident Commander in concert with the Redding ECC.

1. Local Government (other operational areas)
2. Out of state resources
3. Cooperating Agencies
4. Federal Resources
5. Contract and private resource
6. CAL FIRE resources (prioritized by distance and travel time)

**III. GENERAL GUIDELINES**

- A. **NO RESOURCES WILL LEAVE UNTIL AUTHORIZED BY THE DEMOB UNIT.**
- B. Efforts will be made to ensure that all released personnel arrive home by 2200.
- C. Prior to leaving the Incident the Demob Unit will brief all Supervisors and Strike Team Leaders.
- D. Notification to incident personnel will be by posting surplus releases in advance.
- E. Actual departure times and ETA at destination will be relayed to Expanded Dispatch at time of departure.
- F. All Trainees will see the Training Tech Specialist prior to departure.
- G. Maximum driving duration for federal resources will not exceed 10 hours/person/day.

**IV. RESPONSIBILITIES**

Unit Leaders will declare resources excess to their Section Chief. Section Chiefs will declare *excess* resources to the Demob Unit. Include the date and time the resources will be surplus, their position on the incident and any transportation needs. **\*\*Use the General Message Form (ICS-213) or Team release form to list all surplus resources. Send to the RESOURCE UNIT.**

**V. RELEASE PROCEDURES**

- A. **Functional Heads** (i.e. Section Chiefs and Unit leaders) are responsible for determining resources "Excess" to their needs and submitting the list to the Planning Section. This must be done 24 hours in advance of anticipated release in order to Notify North Ops of planned demobilization and to allow a proactive approach to reassignments or releases to the home units. The lists will provide the following information about the resource:
  1. Order/Request number
  2. Resource name or designator
  3. ETD
  4. Travel time (including rest and meals if necessary)
  5. Destination
  6. Availability for reassignment (if not available, provide valid reason)
  7. If flying, nearest Jetport and Social Security Number
- B. **RESL** will determine if there is a need at the incident that the Excess resource can fill. If no incident reassignments are necessary, the resource will be declared "Surplus" to the incident.
- C. **DMOB** will combine the approved surplus resource lists to create "Pending" resource lists to be submitted to the forest or agency dispatch for confirmation. DMOB will work with the resources and supply units so that the resource status board and resource orders can be kept up to date.
- D. When a resource status has been **confirmed** by dispatch and NOPS. DMOB will notify the resource so that check-out may begin.
- E. The Crew Leader or individual will take the Demobilization Check-out form to:
  - COML (to confirm that radio equipment is returned)
  - SUPL (to confirm all non-expendable property is returned)
  - GSUL (to inspect, clean and repair vehicles)
  - TIML (to confirm all time reporting documents are complete)
  - DOCL (to hand in logs or ratings)
- F. DMOB will be the last stop in the press release process and:
  - Sign-off, note date and time on the ICS-221
  - Note any revisions to the ETD or ETA
  - Collect the ICS-221
- G. Resource is **released** and free to leave the incident.

# SHASTA COMPLEX PHONE PLAN

I.C.		335-3428
SAFETY		707-889-4215
LIASON		335-3373
INFO		335-3372
	FAX	335-3395
CDC A. REP		335-3415
OPERATIONS		335-3408
		335-3377
PLANS		335-4084
LOGISTICS		335-3405
FINANCE	FAX	335-3382
	MOTEL	335-3424
	PPTS	335-3423
COMMUNICATIONS		335-3402
		335-5203
ORDERING		335-3413
		335-3411
	FAX	335-3388
FIRE INFO SHU OFFICE		225-2510
RESOURCE UNIT		335-4084
INCINET/CHECK-IN/DMOB/TRAINING	FAX	335-4106
NORTH TREE OFFICE	FAX	335-4152
NORTH TREE GIS		335-4132
CHECK-IN		335-3386
		335-3433
STAGING----JERROD KOOS		831-251-6374
BURNEY LCA		335-2203
SHERIFFS OFFICE		335-2347
REPAIR		335-5542
		448-2430
RADIO TECH		335-4142
COM UNIT LEADER		335-4104
HELIBASE DESK		530-336-6280
HELIBASE FINANCE		530-336-6123
DAN TINNEL	OES REP	530-941-0095
WILL DARNALL	FSC	530-200-2504
HARPER KEENE	PUL	530-276-4687
TOM CRESPIAN	TUL	530-200-6097
STEVE WEIR	GSUL	707-391-6732
SEAN	COST	530-200-2514
PATTI ROYER	PPTS	916-838-0843
KIM RONGEY	PURC	916-316-7352
JAN NEWTON	PURC	916-804-2113
KATHLEEN HIE	PURC	707-287-6718
PAUL ABE	ETR	916-799-8528
SKIP SANNERS	COMP	530-966-0350
CHRIS RAMEY	PTRC	707-599-6439
LARAMIE GRIFFITH	CCC A. REP	530-227-1024
ARIK BORD	ELITE SECURITY	530-598-6498
ROGER CUMMINGS	ELITE SECURITY	530-605-5904
ELITE SECURITY	DISP	888-948-4774
		530-242-8957

# DIVISION / GROUP SUPERVISOR OPERATIONAL PERIOD - DEBRIEFING FORM

Incident Name: \_\_\_\_\_ Operational Period: \_\_\_\_\_

Branch: \_\_\_\_\_ Division/Group: \_\_\_\_\_ Div/Grp Supervisor Name: \_\_\_\_\_  
 Cell #: \_\_\_\_\_ Vehicle Radio #: \_\_\_\_\_

Weather: \_\_\_\_\_

Time: \_\_\_\_\_ Temp: \_\_\_\_\_ Humidity: \_\_\_\_\_ Fire Behav.: \_\_\_\_\_  
 Wind: \_\_\_\_\_ Fuels: \_\_\_\_\_ Topog: \_\_\_\_\_ Natural Barriers: \_\_\_\_\_

Today

**General Remarks / Accomplishments / Problem Areas:**

\_\_\_\_\_

\_\_\_\_\_

\_\_\_\_\_

\_\_\_\_\_

Spot Fires: \_\_\_\_\_

Safety Concerns: \_\_\_\_\_

Water Sources: \_\_\_\_\_

Drop Points: \_\_\_\_\_

Division Breaks: \_\_\_\_\_

Helispots: \_\_\_\_\_

Values at Risk: \_\_\_\_\_

**ACCOUNTABILITY**

**AGENCY Resources Committed to Division / Group**

Overhead	ENG	ENG S/T	CRW	CRW S/T	DOZ	DOZ S/T	Other

**ACCOUNTABILITY**

**PRIVATE Resources Committed to Division / Group**

Kind	Req. #	Owner / ID	Operator	2nd Oper?	Type/Size	Remarks

**Reminder: Complete Vendor Shift Tickets and Vendor Evaluations**



## Planning for Next Operational Period

Next Operational Period: \_\_\_\_\_ thru \_\_\_\_\_ Division / Group: \_\_\_\_\_

### Division / Group RESOURCES NEEDED for Next Operational Period

Engines (Type/#)		Crews (Type/#)		Dozers	Water Tenders	Tankers	Copters	Other Equipment	Overhead
<i>ST</i>	<i>SR</i>	<i>ST</i>	<i>SR</i>	<i>Type/#</i>	<i>Type/#</i>	<i>Type/#</i>	<i>Type/#</i>	<i>Kind/#</i>	<i>Kind/#</i>

### Division / Group Assignments -- Special Needs Next Operational Period

Tomorrow

**Work Assignments:**

---

---

---

---

---

---

**Special Needs:**

---

---

---

---

### MAP of Current and Expected Conditions

**Please Turn in this Form to Planning Section - We have Color Maps**



